

## **APPENDIX C**

---

### **HEALTH RISK ASSESSMENT**

*[This page intentionally left blank.]*

**Ultramar Inc.  
Valero Wilmington Refinery  
SCAQMD Rule 1401 Analysis  
New Cogeneration Unit**

---

**September 12, 2011**

---

Prepared for: Ultramar Inc.  
Prepared by: Environmental Audit, Inc.  
1000 Ortega Way, Suite A  
Placentia, CA 92780  
714-632-8521



**Ultramar Inc.  
Valero Wilmington Refinery  
SCAQMD Rule 1401 Analysis  
New Cogeneration Unit**

## **FACILITY INFORMATION**

The Ultramar Inc. - Valero Wilmington Refinery is located at 2402 East Anaheim Street in the Wilmington district of the City of Los Angeles in the southern portion of Los Angeles County (see Figure 1). The South Coast Air Quality Management District (SCAQMD) identification number for the facility is 800026.

## **INTRODUCTION**

Valero Wilmington Refinery (Refinery) is proposing to build a nominal 31 MW cogeneration unit (Cogen) which includes a natural gas-fired turbine electric generator, a heat recovery steam generator (HRSG) with supplemental duct firing of refinery gas, and the associated air pollution control equipment.

The Refinery currently purchases electricity from Los Angeles Department of Water and Power (LADWP) and relies on steam and electricity from Air Products. Two on-site Refinery boilers also provide 300,000 lb/hr steam at 300 psig. The proposed Cogen project would allow the Refinery to rely mainly on on-site power generation under normal operating conditions as part of an effort to reduce the risk of process upset due to interruption of power supplied by any outside provider. The goal of the project is to offset the LADWP power purchase and supplement the power and steam currently supplied by Air Products.

As part of the permitting process, Environmental Audit Inc. (EAI) has performed a SCAQMD Rule 1401 analysis for the proposed Cogen. EAI has calculated emissions to evaluate the maximum potential impacts of toxic air contaminants (TACs) associated with the Cogen.

Based on information provided by Ultramar, the Cogen has been modeled a point source (Cogen stack) and an area source (fugitive emissions) (See Figure 2). TACs in the emissions from the Cogen are included in the SCAQMD Rule 1401 – New Source Review for Toxic Air Contaminants. The health risks were evaluated using the SCAQMD *Risk Assessment Procedures for Rules 1401 and 212 Version 7.0* (July 2005). The analysis for cancer and non-cancer risks is presented below. The sources are expected to emit 51 chemicals, 33 of which are chemicals listed in Appendix I of the SCAQMD Rule 1401 Guidelines – 20 are considered carcinogens, 23 are considered to have adverse chronic health effects, and 13 are considered to have adverse acute health effects (See Appendix A).

## **EMISSION ESTIMATES**

The emissions estimates of TACs for combustion are calculated using emission factors from the 2010 Annual Emissions Report for the HRSG and the Supplemental Instructions for Reporting Quadrennial Air Toxics Emissions for natural gas turbines. Fugitive emissions are based on the Method 2 of the SCAQMD *Guide for Fugitive Emissions Calculations* (SCAQMD, 2003). The calculated emissions are presented in Appendix B.

**Valero Wilmington Refinery  
SCAQMD Rule 1401 Analysis  
New Cogeneration Unit**

## **HEALTH RISK ASSESSMENT**

The California Air Resources Board (CARB) Hotspots Analysis Reporting Program (HARP) model is the most appropriate model for determining the air quality impact from proposed project. The HARP model (CARB, 2005) combines the US EPA Industrial Source Complex dispersion model with a risk calculation model based on the Air Toxics Hot Spots Program Risk Assessment Guidelines (OEHHA, 2003). The dispersion portion of the HARP model provides estimates of source-specific annual and hourly maximum ambient groundlevel concentrations. The risk calculator in the HARP model estimates the cancer risk, chronic index, and acute index values. The model default values were modified to conform to the SCAQMD Supplement Guidelines for Preparing Risk Assessment for the Air Toxics “Hot Spots” Information and Assessment Act (AB2588) (SCAQMD, 2005).

The project is modeled as a point source and an area source. The source parameters are listed in Table 1. The locations of the sources were identified based on data provided by Ultramar and the Long Beach USGS Quadrangles (see attached Figure 2).

**TABLE 1**

**Source Parameters**

| <b>Name</b>     | <b>UTME</b> | <b>UTMN</b> | <b>Release Height (ft)</b> | <b>Width (ft)</b> | <b>Length (ft)</b> | <b>Temp (F°)</b> | <b>Diameter (ft)</b> | <b>Velocity (ft/sec)</b> |
|-----------------|-------------|-------------|----------------------------|-------------------|--------------------|------------------|----------------------|--------------------------|
| Cogen           | 385407      | 3738093     | 95                         |                   |                    | 254.8            | 9                    | 61.5                     |
| Cogen Fugitives | 385400      | 3738070     | 6                          | 60                | 150                |                  |                      |                          |

The receptors used in the model include a fence line receptor grid and a fine receptor grid. The terrain surrounding the Facility is relatively flat; however, terrain variations were included for the receptor networks. The fence line receptor grid (maximal spacing every 50 meters(m)) were used to determine the maximum concentrations at the property line of the Refinery. A fine receptor grid (100 m x 100 m spacing) was used to identify the maximum impact locations. Figure 3 shows all modeled receptors.

All maximum impact locations are verified as credible locations for receptors (i.e., streets, railroad tracks, and waterways are not considered valid receptor locations). The locations of the maximum impacts are then verified for the type of receptor and are reported below. Selected tables from the HARP model are included in Appendix C. The complete output results from the HARP model are on file at the SCAQMD.

## **CANCER RISK ANALYSIS**

The maximum cancer risk for an exposed individual resident (MEIR) is located 1.5 miles east of the Refinery (No. 669, UTM Coordinates 388700, 3738100, See Figure 3). The incremental cancer

**Valero Wilmington Refinery  
SCAQMD Rule 1401 Analysis  
New Cogeneration Unit**

risk is  $3.86 \times 10^{-7}$  or 0.4 in a million at the MEIR. Polycyclic aromatic hydrocarbons (PAHs) contribute approximately 72.5 percent of the calculated cancer risk at the MEIR. The oral pathways accounts for 71.2 percent of the cancer risk. Detailed cancer risk contributions by pathway and pollutants are presented in Appendix C.

The maximum exposed incremental cancer risk at an occupational exposure (MEIW) is located approximately 1,200 feet east of the Refinery (No. 648, UTM Coordinates 386600, 3738100, See Figure 3). The incremental cancer risk is  $1.11 \times 10^{-7}$  or 0.1 in a million at the MEIW. PAHs contribute approximately 70 percent of the calculated cancer risk at the MEIW. The oral pathways accounts for 69.2 percent of the cancer risk. Detailed cancer risk contributions by pathway and pollutants are presented in Appendix C.

### **NON-CANCER RISK ANALYSIS**

The maximum chronic hazard index (MCHI) total for the respiratory system is 0.0029. The MCHI is located approximately 1,100 feet east of the Refinery (No. 647, UTM Coordinates 386500, 3738100, See Figure 3). Formaldehyde contributes approximately 42.8 percent of the calculated MCHI. Detailed contribution by pollutant to the chronic hazard index for the maximum receptor location is presented in Appendix C.

The maximum acute hazard index (MAHI) total for the eyes is 0.0157. The MAHI is located approximately 450 feet west of the Refinery (No. 634, UTM 385200, 3738100, See Figure 3). Formaldehyde contributes approximately 61.5 percent of the calculated MAHI. Detailed contribution by pollutant to the acute hazard index for the maximum receptor location is presented in Appendix C.

### **CONCLUSIONS**

The cancer risk for the TACs emitted from the Cogen is below the significance threshold of one per million and chronic and acute hazard indices are below the 1.0 threshold established under SCAQMD Rule 1401. Therefore, the SCAQMD Rule 1401 cancer risk and hazard index thresholds are not expected to be exceeded at any receptor location. No further health risk analyses are required.

### **REFERENCES**

CARB/OEHHA, 2003. *Air Resources Board Recommended Interim Risk Management Policy for Inhalation-Based Residential Cancer Risk*, October 2003.

CARB, 2005. *Hotspots Analysis and Reporting Program HARP Version 1.4a (Build 23.07.00) and resources*, <http://www.arb.ca.gov/toxics/harp/downloads.htm>.

OEHHA, 2003. *Air Toxics Hot Spots Program Risk Assessment Guideline: The Air Toxics Hot Spots Program Guidance Manual for Preparation of Health Risk Assessment*, August 2003.

**Valero Wilmington Refinery  
SCAQMD Rule 1401 Analysis  
New Cogeneration Unit**

SCAQMD, 2008. *Reporting Procedures for AB2588 Facilities for Reporting their Quadrennial Air Toxics Emissions Inventory*, June 2008.

SCAQMD, 2005. *Supplemental Guidelines for Preparing Risk Assessment for the Air Toxic “Hot Spot” Information and Assessment Act. 2005.*

SCAQMD, 2003. *Guide for Fugitive Emissions Calculations. 2003.*

MC/MRB:dab/ss

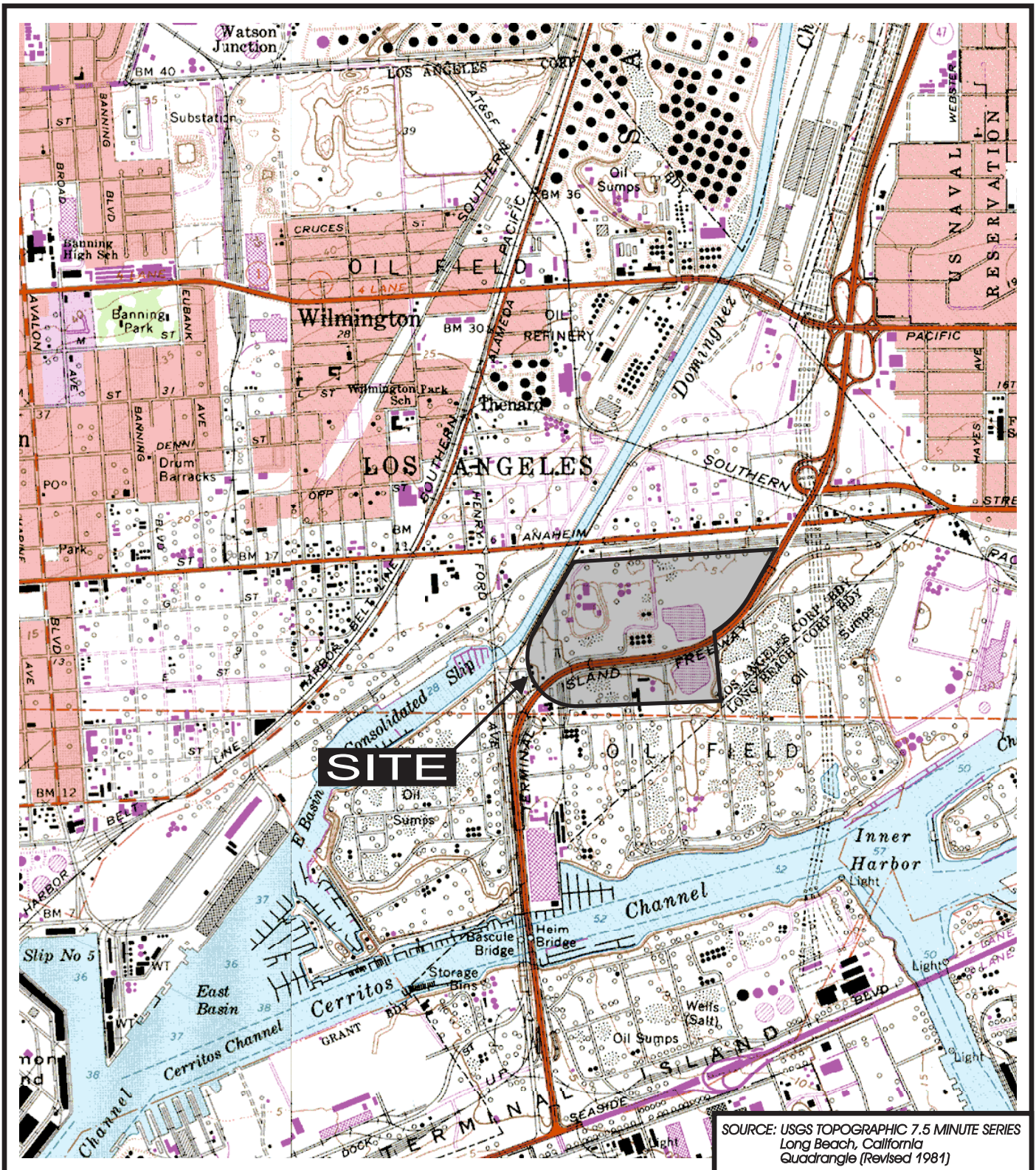
M:\MC\2709 Valero - Cogen\1401\1401\2709 Cogen 1401 for Neg Dec.doc



**FIGURES**

---

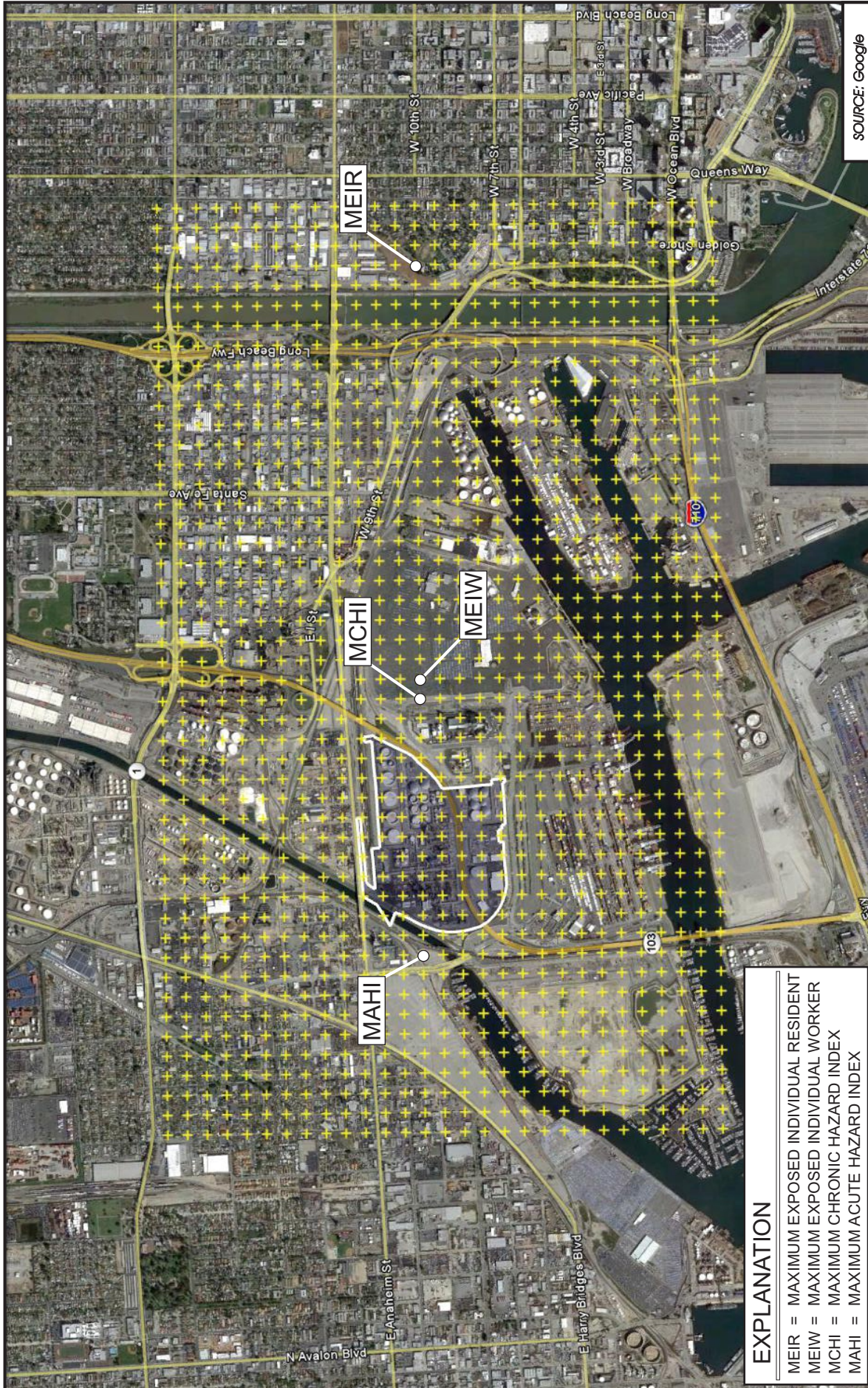




### SITE LOCATION MAP VALERO WILMINGTON REFINERY







SOURCE: Google



**EXPLANATION**

MEIR = MAXIMUM EXPOSED INDIVIDUAL RESIDENT  
 MEIW = MAXIMUM EXPOSED INDIVIDUAL WORKER  
 MCHI = MAXIMUM CHRONIC HAZARD INDEX  
 MAHI = MAXIMUM ACUTE HAZARD INDEX

**ENVIRONMENTAL AUDIT, INC.**



**MAXIMUM IMPACT LOCATIONS  
 VALERO WILMINGTON REFINERY  
 NEW COGEN**

Figure 3  
 ORIGINAL IN COLOR





**APPENDIX A**  
**Emission Calculations**

---





APPENDIX C  
Appendix A

Emission Calculations

Valero Wilmington Refinery  
New Cogeneration Unit Stack Emissions

| Chemical               | Emission Factors (lb/mm scf) |          |          | HRSG     |          | Turbine  |          | Total Stack Emissions |          |
|------------------------|------------------------------|----------|----------|----------|----------|----------|----------|-----------------------|----------|
|                        | Stack Gas                    | RFG      | NG       | lb/yr    | lb/hr    | lb/yr    | lb/hr    | lb/yr                 | lb/hr    |
| 1,3-Butadiene          |                              |          | 4.39E-04 | 0.00E+00 | 0.00E+00 | 1.29E+00 | 1.48E-04 | 1.29E+00              | 1.48E-04 |
| 2-Methylnaphthalene    | 6.19E-07                     |          |          | 1.06E-02 | 1.21E-06 | 0.00E+00 | 0.00E+00 | 1.06E-02              | 1.21E-06 |
| Acenaphthene           | 6.38E-08                     |          |          | 1.09E-03 | 1.25E-07 | 0.00E+00 | 0.00E+00 | 1.09E-03              | 1.25E-07 |
| Acenaphthylene         | 4.18E-08                     |          |          | 7.16E-04 | 8.17E-08 | 0.00E+00 | 0.00E+00 | 7.16E-04              | 8.17E-08 |
| Acetaldehyde           | 1.04E-02                     |          | 4.08E-02 | 1.78E+02 | 2.03E-02 | 1.20E+02 | 1.37E-02 | 2.98E+02              | 3.41E-02 |
| Acrolein               |                              |          | 6.53E-03 | 0.00E+00 | 0.00E+00 | 1.92E+01 | 2.19E-03 | 1.92E+01              | 2.19E-03 |
| Ammonia                |                              |          |          | 0.00E+00 | 0.00E+00 | 0.00E+00 | 0.00E+00 | 2.37E+04              | 2.71E+00 |
| Anthracene             | 5.11E-08                     |          |          | 8.75E-04 | 9.99E-08 | 0.00E+00 | 0.00E+00 | 8.75E-04              | 9.99E-08 |
| Antimony               |                              | 5.81E-04 |          | 7.31E-01 | 8.35E-05 | 0.00E+00 | 0.00E+00 | 7.31E-01              | 8.35E-05 |
| Arsenic                | 5.04E-06                     |          |          | 8.63E-02 | 9.85E-06 | 0.00E+00 | 0.00E+00 | 8.63E-02              | 9.85E-06 |
| Barium                 |                              | 6.49E-03 |          | 8.17E+00 | 9.32E-04 | 0.00E+00 | 0.00E+00 | 8.17E+00              | 9.32E-04 |
| Benzene                | 2.06E-04                     |          | 1.22E-02 | 3.52E+00 | 4.02E-04 | 3.60E+01 | 4.11E-03 | 3.95E+01              | 4.51E-03 |
| Benzo(a)anthracene     | 4.18E-08                     |          |          | 7.16E-04 | 8.17E-08 | 0.00E+00 | 0.00E+00 | 7.16E-04              | 8.17E-08 |
| Benzo(a)pyrene         | 4.18E-08                     |          |          | 7.16E-04 | 8.17E-08 | 0.00E+00 | 0.00E+00 | 7.16E-04              | 8.17E-08 |
| Benzo(b)fluoranthene   | 4.18E-08                     |          |          | 7.16E-04 | 8.17E-08 | 0.00E+00 | 0.00E+00 | 7.16E-04              | 8.17E-08 |
| Benzo (e) pyrene       | 2.91E-08                     |          |          | 4.99E-04 | 5.69E-08 | 0.00E+00 | 0.00E+00 | 4.99E-04              | 5.69E-08 |
| Benzo(g,h,i)perylene   | 5.44E-07                     |          |          | 9.31E-03 | 1.06E-06 | 0.00E+00 | 0.00E+00 | 9.31E-03              | 1.06E-06 |
| Benzo(k)fluoranthene   | 4.18E-08                     |          |          | 7.16E-04 | 8.17E-08 | 0.00E+00 | 0.00E+00 | 7.16E-04              | 8.17E-08 |
| Beryllium              | 7.53E-07                     |          |          | 1.29E-02 | 1.47E-06 | 0.00E+00 | 0.00E+00 | 1.29E-02              | 1.47E-06 |
| Cadmium                | 1.83E-06                     |          |          | 3.13E-02 | 3.57E-06 | 0.00E+00 | 0.00E+00 | 3.13E-02              | 3.57E-06 |
| Chlorobenzene          | 2.97E-04                     |          |          | 5.08E+00 | 5.80E-04 | 0.00E+00 | 0.00E+00 | 5.08E+00              | 5.80E-04 |
| Chromium (Hex)         | 6.11E-06                     |          |          | 1.05E-01 | 1.19E-05 | 0.00E+00 | 0.00E+00 | 1.05E-01              | 1.19E-05 |
| Chromium (Total)       | 1.80E-05                     |          |          | 3.09E-01 | 3.53E-05 | 0.00E+00 | 0.00E+00 | 3.09E-01              | 3.53E-05 |
| Chrysene               | 4.18E-08                     |          |          | 7.16E-04 | 8.17E-08 | 0.00E+00 | 0.00E+00 | 7.16E-04              | 8.17E-08 |
| Copper                 | 3.69E-05                     |          |          | 6.31E-01 | 7.21E-05 | 0.00E+00 | 0.00E+00 | 6.31E-01              | 7.21E-05 |
| Dibenz(a,h)anthracene  | 4.18E-08                     |          |          | 7.16E-04 | 8.17E-08 | 0.00E+00 | 0.00E+00 | 7.16E-04              | 8.17E-08 |
| Ethylbenzene           | 2.80E-04                     |          | 3.26E-02 | 4.79E+00 | 5.47E-04 | 9.60E+01 | 1.10E-02 | 1.01E+02              | 1.15E-02 |
| Fluoranthene           | 2.84E-07                     |          |          | 4.87E-03 | 5.56E-07 | 0.00E+00 | 0.00E+00 | 4.87E-03              | 5.56E-07 |
| Fluorene               | 4.18E-07                     |          |          | 7.16E-03 | 8.17E-07 | 0.00E+00 | 0.00E+00 | 7.16E-03              | 8.17E-07 |
| Formaldehyde           | 1.23E-02                     |          | 7.24E-01 | 2.11E+02 | 2.41E-02 | 2.13E+03 | 2.43E-01 | 2.34E+03              | 2.67E-01 |
| Hydrogen Sulfide       | 1.80E-02                     |          |          | 3.07E+02 | 3.51E-02 | 0.00E+00 | 0.00E+00 | 3.07E+02              | 3.51E-02 |
| Indeno(1,2,3-cd)pyrene | 4.18E-08                     |          |          | 7.16E-04 | 8.17E-08 | 0.00E+00 | 0.00E+00 | 7.16E-04              | 8.17E-08 |
| Lead                   | 5.59E-05                     |          |          | 9.58E-01 | 1.09E-04 | 0.00E+00 | 0.00E+00 | 9.58E-01              | 1.09E-04 |
| Manganese              | 3.91E-05                     |          |          | 6.69E-01 | 7.63E-05 | 0.00E+00 | 0.00E+00 | 6.69E-01              | 7.63E-05 |
| Mercury                | 2.58E-05                     |          |          | 4.41E-01 | 5.03E-05 | 0.00E+00 | 0.00E+00 | 4.41E-01              | 5.03E-05 |
| Naphthalene            | 7.86E-06                     |          | 1.33E-03 | 1.35E-01 | 1.54E-05 | 3.92E+00 | 4.47E-04 | 4.05E+00              | 4.62E-04 |
| Nickel                 | 7.65E-05                     |          |          | 1.31E+00 | 1.50E-04 | 0.00E+00 | 0.00E+00 | 1.31E+00              | 1.50E-04 |
| o-xylenes              | 2.80E-04                     |          |          | 4.79E+00 | 5.46E-04 | 0.00E+00 | 0.00E+00 | 4.79E+00              | 5.46E-04 |
| p,m-xylenes            | 2.80E-04                     |          |          | 4.79E+00 | 5.46E-04 | 0.00E+00 | 0.00E+00 | 4.79E+00              | 5.46E-04 |
| Perylene               | 4.18E-08                     |          |          | 7.16E-04 | 8.17E-08 | 0.00E+00 | 0.00E+00 | 7.16E-04              | 8.17E-08 |
| Phenanthrene           | 1.25E-06                     |          |          | 2.15E-02 | 2.45E-06 | 0.00E+00 | 0.00E+00 | 2.15E-02              | 2.45E-06 |
| Phenol                 | 1.18E-02                     |          |          | 2.02E+02 | 2.31E-02 | 0.00E+00 | 0.00E+00 | 2.02E+02              | 2.31E-02 |
| Phosphorus             |                              | 7.21E-04 |          | 9.07E-01 | 1.04E-04 | 0.00E+00 | 0.00E+00 | 9.07E-01              | 1.04E-04 |
| Propylene              |                              | 2.05E-03 | 2.96E-02 | 2.58E+00 | 2.95E-04 | 8.71E+01 | 9.95E-03 | 8.97E+01              | 1.02E-02 |
| Pyrene                 | 2.84E-07                     |          |          | 4.87E-03 | 5.56E-07 | 0.00E+00 | 0.00E+00 | 4.87E-03              | 5.56E-07 |
| Selenium               | 1.81E-05                     |          |          | 3.11E-01 | 3.54E-05 | 0.00E+00 | 0.00E+00 | 3.11E-01              | 3.54E-05 |
| Silver                 |                              | 1.81E-03 |          | 2.28E+00 | 2.60E-04 | 0.00E+00 | 0.00E+00 | 2.28E+00              | 2.60E-04 |
| Thallium               |                              | 6.49E-03 |          | 8.17E+00 | 9.32E-04 | 0.00E+00 | 0.00E+00 | 8.17E+00              | 9.32E-04 |
| Toluene                | 7.79E-04                     |          | 1.33E-01 | 1.33E+01 | 1.52E-03 | 3.92E+02 | 4.47E-02 | 4.05E+02              | 4.62E-02 |
| Xylene (Total)         |                              |          | 6.53E-02 | 0.00E+00 | 0.00E+00 | 1.92E+02 | 2.19E-02 | 1.92E+02              | 2.19E-02 |
| Zinc                   | 1.22E-03                     |          |          | 2.09E+01 | 2.38E-03 | 0.00E+00 | 0.00E+00 | 2.09E+01              | 2.38E-03 |
| PAHs                   |                              |          | 9.18E-04 | 0.00E+00 | 0.00E+00 | 2.70E+00 | 3.09E-04 | 2.70E+00              | 3.09E-04 |

Emission Factors based on R2 AER speciation for RFG.

HRSG = Heat recovery steam generator - Based on 164.5 mmbtu/hr of RFG running 8760 hr/yr.

Turbine based on 352.9 mmbtu/hr of NG running 8760 hr/yr.

Stack Gas = 13.6 \* RFG fuel rate. Based on highest ratio of RFG to Stack Gas in past 3 years for all boilers.

RFG = Refinery fuel gas. 1143.6 btu/scf.

NG = Natural gas. 1050 btu/scf.

Ammonia based on 5 ppm.

Worst case assumes no startup/shutdown events.

APPENDIX C  
**Appendix A**

**Emission Calculations**

**Valero Wilmington Refinery  
 New Cogeneration Unit Speciated Fugitive Emissions**

| Chemical         | RFG Speciation | Molecular wt | Fugitive Emissions |       |
|------------------|----------------|--------------|--------------------|-------|
|                  | % volume       | lb/lb-mol    | lb/yr              | lb/hr |
| Ammonia          | NA             | NA           | 1124.00            | 0.13  |
| Hexane           | 0.18%          | 86.18        | 20.44              | 0.00  |
| Hydrogen Sulfide | 0.01%          | 34.08        | 0.45               | 0.00  |
| Propylene        | 2.26%          | 42.08        | 125.34             | 0.01  |

Note: All fugitive emissions based on Correlation Equation @ 500ppm.

**Basis**

|                   |                |
|-------------------|----------------|
| Ammonia Fugitives | 1124 lb/yr     |
| RFG Fugitives     | 2860 lb/yr     |
| RGF Molecular wt  | 21.7 lb/lb-mol |
| RFG Fugitive Mass | 132 lb-mol/yr  |

**Appendix A**  
**Valero Wilmington Refinery**  
**New Cogeneration Unit Fugitive Ammonia Emissions**

| Source Unit  |   | Service                        | No. Of Existing Components (1) | No. of Existing Components to be Removed (2) | No. of New Components to be Installed (3) | Correlation Equation (CE) Factor (500 ppm)                     |   |   |
|--|---|--------------------------------|--------------------------------|--|---|--|---|---|
|  |   |                                |                                |  |   | Correlation Equation Factor 500 ppm Screening Value (lbs/year) | Pre Mod Emissions Based on Correlation 500 ppm Screening Value (lbs/year) | Post Modification Emissions based on 500 ppm Correlation Equation Factor (lbs/year) |
| Valves   | Sealed Bellows                              | All                            |                                |  |   | 0.00   |   | 0   |
|  | SCAQMD                                      | Gas / Vapor                    |                                |  |   | 4.55   | 0   | -   |
|  | Approved                                    | Light Liquid (4)               |                                | 40   |   | 4.55   | 0   | 181.83  |
|  | I&M Program                                 | Heavy Liquid (5)<br>> 8 inches |                                |  |   | 4.55   | 0   | -   |
| Pumps  | Sealless Type                               | Light Liquid (4)               |                                |  |   | 0.00   | 0   | -   |
|  | Double Mechanical Seals or Equivalent Seals | Light Liquid (4)               |                                | 4  |   | 46.83  |   | 187.30  |
|  | Single Mechanical Seals                     | Heavy Liquid (5)               |                                |  |   | 46.83  | 0   |   |
| Compressors  |   | Gas / Vapor                    |                                |  |   | 9.09   |   | -   |
| Flanges (ANSI 16.5-1988)                                       |   | All                            |                                |  | 108                                       | 6.99   |   | 754.94  |
| Connectors   |   | All                            |                                |  |   | 2.86   |   | -   |
| Pressure Relief Valves   |   | All                            |                                |  | 2   |  | 0   | -   |
| Process Drains with P-Trap or Seal Pot                         |   | All                            |                                |  | 5   | 9.09   |   | -   |
| Other (including fittings, hatches, sight-glasses, and meters) |   | All                            |                                |  |   | 9.09   |   | -   |
| Total Emissions  |   | lb/year                        |                                |  |   |  |   | 1,124   |
|  |   | lbs/day                        |                                |  |   |  | 0   | 3.12  |

-1 Any component currently installed prior to the modification.  
-2 Any component to be removed due to modification.  
-3 Any new component proposed to be installed due to the modification; this also includes new components to be installed to replace existing components.  
-4 Light liquid and gas/liquid streams: Liquid or gas/liquid stream with a vapor pressure greater than that of kerosene (>0.1 psia @ 100°F or 689 Pa @ 38°C), based on the most volatile class present at 20% by volume. - used single mechanical seal EF  
-5 Heavy Liquid: streams with a vapor pressure equal to or less than that of kerosene (< 0.1 psia @ 100°F or 689 Pa @ 38°C), based on the most volatile class present at 20% by  
-6 Emission Factors were developed using actual emissions for 10 quarters from Q3, 2005 through Q4, 2007 for Cleans Fuel Area and using a factor of 2 to the actual emissions.

**Appendix A**  
**Valero Wilmington Refinery**  
**New Cogeneration Unit Fugitive RFG Emissions**

| Source Unit  |   | Service                        | No. Of Existing Components (1) | No. of Existing Components to be Removed (2) | No. of New Components to be Installed (3) | Correlation Equation (CE) Factor (500 ppm)                     |   |   |
|--|---|--------------------------------|--------------------------------|--|---|--|---|---|
|  |   |                                |                                |  |   | Correlation Equation Factor 500 ppm Screening Value (lbs/year) | Pre Mod Emissions Based on Correlation 500 ppm Screening Value (lbs/year) | Post Modification Emissions based on 500 ppm Correlation Equation Factor (lbs/year) |
| Valves   | Sealed Bellows                              | All                            |                                |  |   | 0.00   | 0   | 0   |
|  | SCAQMD Approved                             | Gas / Vapor                    |                                |  | 137                                       | 4.55   | 0   | 622.77  |
|  | I&M Program                                 | Light Liquid (4)               |                                |  |   | 4.55   | 0   | -   |
|  |   | Heavy Liquid (5)<br>> 8 inches |                                |  |   | 4.55   | 0   | -   |
| Pumps  | Sealless Type                               | Light Liquid (4)               |                                |  |   | 0.00   | 0   | -   |
|  | Double Mechanical Seals or Equivalent Seals | Light Liquid (4)               |                                |  |   | 46.83  |   | -   |
|  |   | Heavy Liquid (5)               |                                |  |   | 46.83  | 0   |   |
|  | Single Mechanical Seals                     |                                |                                |  |   |  |   |   |
| Compressors  |   | Gas / Vapor                    |                                |  |   | 9.09   | -   | -   |
| Flanges (ANSI 16.5-1988)                                       |   | All                            |                                |  | 320                                       | 6.99   | -   | 2,236.86  |
| Connectors   |   | All                            |                                |  |   | 2.86   | -   | -   |
| Pressure Relief Valves   |   | All                            |                                |  | 8   |  | 0   | -   |
| Process Drains with P-Trap or Seal Pot                         |   | All                            |                                |  | 6   | 9.09   |   |   |
| Other (including fittings, hatches, sight-glasses, and meters) |   | All                            |                                |  | 0   | 9.09   |   |   |
| Total Emissions  |   | lb/year                        |                                |  | 0   |  | -   | 2,860   |
|  |   | lbs/day                        |                                |  | 0   |  | 0   | 7.94  |

-1 Any component currently installed prior to the modification.  
-2 Any component to be removed due to modification.  
-3 Any new component proposed to be installed due to the modification; this also includes new components to be installed to replace existing components.  
-4 Light liquid and gas/liquid streams: Liquid or gas/liquid stream with a vapor pressure greater than that of kerosene (>0.1 psia @ 100°F or 689 Pa @ 38°C), based on the most volatile class present at 20% by volume. - used single mechanical seal EF  
-5 Heavy Liquid: streams with a vapor pressure equal to or less than that of kerosene (< 0.1 psia @ 100°F or 689 Pa @ 38°C), based on the most volatile class present at 20% by volume.  
-6 Emission Factors were developed using actual emissions for 10 quarters from Q3, 2005 through Q4, 2007 for Cleans Fuel Area and using a factor of 2 to the actual emissions.

**APPENDIX B**  
**Health Risk Tables**

---



APPENDIX C  
Appendix B

Health Data

Valero Wilmington Refinery  
New Cogeneration Unit

| CHEMICAL               | CAS NO.  | CancerPF<br>(Inhalation)<br>(mg/kg-d) <sup>-1</sup> | CancerPF<br>(Oral)<br>(mg/kg-d) <sup>-1</sup> | ChronicREL<br>(Inhalation)<br>(µg/m <sup>3</sup> ) | ChronicREL<br>(Oral)<br>(mg/kg-d) | AcuteREL<br>(Inhalation) (µg/m <sup>3</sup> ) |
|------------------------|----------|---|---|--|-----------------------------------|---|
| 1,3-Butadiene          | 106990   | 0.6   |   | 20   |                                   |   |
| 2-Methyl naphthalene   | 91576    |   |   |  |                                   |   |
| Acenaphthene           | 83329    |   |   |  |                                   |   |
| Acenaphthylene         | 208968   |   |   |  |                                   |   |
| Acetaldehyde           | 75070    | 0.01  |   | 140  |                                   | 470   |
| Acrolein               | 107028   |   |   | 0.35   |                                   | 2.5   |
| Ammonia                | 7664417  |   |   | 200  |                                   | 3200  |
| Anthracene             | 120127   |   |   |  |                                   |   |
| Antimony               | 7440360  |   |   |  |                                   |   |
| Arsenic                | 7440382  | 12  | 1.50E+00                                      | 0.015  | 0.0000035                         | 0.2   |
| Barium                 | 7440393  |   |   |  |                                   |   |
| Benz[a]anthracene      | 56553    | 0.39  | 1.20E+00                                      |  |                                   |   |
| Benzene                | 71432    | 0.1   |   | 60   |                                   | 1300  |
| Benzo[a]pyrene         | 50328    | 3.90E+00  | 1.20E+01                                      |  |                                   |   |
| Benzo[b]fluoranthene   | 205992   | 3.90E-01  | 1.20E+00                                      |  |                                   |   |
| Benzo[e]pyrene         | 192972   |   |   |  |                                   |   |
| Benzo[g,h,i]perylene   | 191242   |   |   |  |                                   |   |
| Benzo[k]fluoranthene   | 207089   | 3.90E-01  | 1.2   |  |                                   |   |
| Beryllium              | 7440417  | 8.40E+00  |   | 0.007  | 0.002                             |   |
| Cadmium                | 7440439  | 1.50E+01  |   | 0.02   | 0.0005                            |   |
| Chlorobenzene          | 108907   |   |   | 1000   |                                   |   |
| Chromium               | 7440473  |   |   |  |                                   |   |
| Chromium(VI)           | 18540299 | 510   |   | 2.00E-01   | 0.02                              |   |
| Chrysene               | 218019   | 3.90E-02  | 1.20E-01                                      |  |                                   |   |
| Copper                 | 7440508  |   |   |  |                                   | 100   |
| Dibenz[a,h]anthracene  | 53703    | 4.10E+00  | 4.10E+00                                      |  |                                   |   |
| Ethyl benzene          | 100414   | 8.70E-03  |   | 2.00E+03   |                                   |   |
| Fluoranthene           | 206440   |   |   |  |                                   |   |
| Fluorene               | 86737    |   |   |  |                                   |   |
| Formaldehyde           | 50000    | 0.021   |   | 9  |                                   | 55  |
| Hexane                 | 110543   |   |   | 7.00E+03   |                                   |   |
| Hydrogen sulfide       | 7783064  |   |   | 10   |                                   | 42  |
| Indeno[1,2,3-cd]pyrene | 193395   | 3.90E-01  | 1.20E+00                                      |  |                                   |   |
| Lead                   | 7439921  | 0.042   | 8.50E-03                                      |  |                                   |   |
| Manganese              | 7439965  |   |   | 0.09   |                                   |   |
| Mercury                | 7439976  |   |   | 3.00E-02   | 0.00016                           | 0.6   |
| Naphthalene            | 91203    | 0.12  |   | 9  |                                   |   |
| Nickel                 | 7440020  | 9.10E-01  |   | 0.05   | 0.05                              | 6   |
| PAH                    | 1151     | 3.90E+00  | 1.20E+01                                      |  |                                   |   |
| Perylene               | 198550   |   |   |  |                                   |   |
| Phenanthrene           | 85018    |   |   |  |                                   |   |
| Phenol                 | 108952   |   |   | 200  |                                   | 5800  |
| Phosphorus             | 7723140  |   |   |  |                                   |   |
| Propylene              | 115071   |   |   | 3.00E+03   |                                   |   |
| Pyrene                 | 129000   |   |   |  |                                   |   |
| Selenium               | 7782492  |   |   | 2.00E+01   |                                   |   |
| Silver                 | 7440224  |   |   |  |                                   |   |
| Thallium               | 7440280  |   |   |  |                                   |   |
| Toluene                | 108883   |   |   | 300  |                                   | 37000   |
| Xylenes (mixed)        | 1330207  |   |   | 700  |                                   | 22000   |
| Zinc                   | 7440666  |   |   |  |                                   |   |

PF = Potency Factor

REL = Reference Exposure Limit

Source: SCAQMD, Risk Assessment Procedures for Rules 1401 and 212,  
Attachment L, Tables for Applications Deemed Complete on or after July 1, 2005.





**APPENDIX C**

---

**Detailed Risk Tables**



Appendix C

Maximum Exposed Individual Resident and Contribution

Valero Wilmington Refinery  
New Cogeneration Unit

| CHEM                   | INHAL    | DERM     | SOIL     | MOTHER   | FISH     | WATER    | VEG      | DAIRY    | BEEF     | CHICK    | PIG      | EGG      | MEAT     | ORAL     | TOTAL    |
|------------------------|----------|----------|----------|----------|----------|----------|----------|----------|----------|----------|----------|----------|----------|----------|----------|
| PAHs                   | 8.44E-09 | 1.12E-07 | 1.68E-08 | 0.00E+00 | 0.00E+00 | 0.00E+00 | 1.42E-07 | 0.00E+00 | 0.00E+00 | 0.00E+00 | 0.00E+00 | 0.00E+00 | 0.00E+00 | 2.71E-07 | 2.80E-07 |
| Chromium (Hex)         | 4.76E-08 | 0.00E+00 | 0.00E+00 | 0.00E+00 | 0.00E+00 | 0.00E+00 | 0.00E+00 | 0.00E+00 | 0.00E+00 | 0.00E+00 | 0.00E+00 | 0.00E+00 | 0.00E+00 | 0.00E+00 | 4.76E-08 |
| Formaldehyde           | 4.39E-08 | 0.00E+00 | 0.00E+00 | 0.00E+00 | 0.00E+00 | 0.00E+00 | 0.00E+00 | 0.00E+00 | 0.00E+00 | 0.00E+00 | 0.00E+00 | 0.00E+00 | 0.00E+00 | 0.00E+00 | 4.39E-08 |
| Arsenic                | 9.24E-10 | 2.21E-09 | 1.08E-09 | 0.00E+00 | 0.00E+00 | 0.00E+00 | 1.98E-10 | 0.00E+00 | 0.00E+00 | 0.00E+00 | 0.00E+00 | 0.00E+00 | 0.00E+00 | 3.49E-09 | 4.41E-09 |
| Benzene                | 3.52E-09 | 0.00E+00 | 0.00E+00 | 0.00E+00 | 0.00E+00 | 0.00E+00 | 0.00E+00 | 0.00E+00 | 0.00E+00 | 0.00E+00 | 0.00E+00 | 0.00E+00 | 0.00E+00 | 0.00E+00 | 3.52E-09 |
| Acetaldehyde           | 2.66E-09 | 0.00E+00 | 0.00E+00 | 0.00E+00 | 0.00E+00 | 0.00E+00 | 0.00E+00 | 0.00E+00 | 0.00E+00 | 0.00E+00 | 0.00E+00 | 0.00E+00 | 0.00E+00 | 0.00E+00 | 2.66E-09 |
| Nickel                 | 1.06E-09 | 0.00E+00 | 0.00E+00 | 0.00E+00 | 0.00E+00 | 0.00E+00 | 0.00E+00 | 0.00E+00 | 0.00E+00 | 0.00E+00 | 0.00E+00 | 0.00E+00 | 0.00E+00 | 0.00E+00 | 1.06E-09 |
| Ethyl Benzene          | 7.82E-10 | 0.00E+00 | 0.00E+00 | 0.00E+00 | 0.00E+00 | 0.00E+00 | 0.00E+00 | 0.00E+00 | 0.00E+00 | 0.00E+00 | 0.00E+00 | 0.00E+00 | 0.00E+00 | 0.00E+00 | 7.82E-10 |
| 1,3-Butadiene          | 6.92E-10 | 0.00E+00 | 0.00E+00 | 0.00E+00 | 0.00E+00 | 0.00E+00 | 0.00E+00 | 0.00E+00 | 0.00E+00 | 0.00E+00 | 0.00E+00 | 0.00E+00 | 0.00E+00 | 0.00E+00 | 6.92E-10 |
| Naphthalene            | 4.34E-10 | 0.00E+00 | 0.00E+00 | 0.00E+00 | 0.00E+00 | 0.00E+00 | 0.00E+00 | 0.00E+00 | 0.00E+00 | 0.00E+00 | 0.00E+00 | 0.00E+00 | 0.00E+00 | 0.00E+00 | 4.34E-10 |
| Cadmium                | 4.18E-10 | 0.00E+00 | 0.00E+00 | 0.00E+00 | 0.00E+00 | 0.00E+00 | 0.00E+00 | 0.00E+00 | 0.00E+00 | 0.00E+00 | 0.00E+00 | 0.00E+00 | 0.00E+00 | 0.00E+00 | 4.18E-10 |
| Lead                   | 3.22E-11 | 2.05E-12 | 6.77E-11 | 0.00E+00 | 0.00E+00 | 0.00E+00 | 4.85E-11 | 0.00E+00 | 0.00E+00 | 0.00E+00 | 0.00E+00 | 0.00E+00 | 0.00E+00 | 1.18E-10 | 1.50E-10 |
| Beryllium              | 9.66E-11 | 0.00E+00 | 0.00E+00 | 0.00E+00 | 0.00E+00 | 0.00E+00 | 0.00E+00 | 0.00E+00 | 0.00E+00 | 0.00E+00 | 0.00E+00 | 0.00E+00 | 0.00E+00 | 0.00E+00 | 9.66E-11 |
| Benzo(a)pyrene         | 2.24E-12 | 2.97E-11 | 4.45E-12 | 0.00E+00 | 0.00E+00 | 0.00E+00 | 3.77E-11 | 0.00E+00 | 0.00E+00 | 0.00E+00 | 0.00E+00 | 0.00E+00 | 0.00E+00 | 7.19E-11 | 7.41E-11 |
| Dibenz(a,h)anthracene  | 2.35E-12 | 1.02E-11 | 1.52E-12 | 0.00E+00 | 0.00E+00 | 0.00E+00 | 1.29E-11 | 0.00E+00 | 0.00E+00 | 0.00E+00 | 0.00E+00 | 0.00E+00 | 0.00E+00 | 2.46E-11 | 2.69E-11 |
| Benzo(a)anthracene     | 2.24E-13 | 2.97E-12 | 4.45E-13 | 0.00E+00 | 0.00E+00 | 0.00E+00 | 3.77E-12 | 0.00E+00 | 0.00E+00 | 0.00E+00 | 0.00E+00 | 0.00E+00 | 0.00E+00 | 7.19E-12 | 7.41E-12 |
| Indeno(1,2,3-cd)pyrene | 2.24E-13 | 2.97E-12 | 4.45E-13 | 0.00E+00 | 0.00E+00 | 0.00E+00 | 3.77E-12 | 0.00E+00 | 0.00E+00 | 0.00E+00 | 0.00E+00 | 0.00E+00 | 0.00E+00 | 7.19E-12 | 7.41E-12 |
| Benzo(k)fluoranthene   | 2.24E-13 | 2.97E-12 | 4.45E-13 | 0.00E+00 | 0.00E+00 | 0.00E+00 | 3.77E-12 | 0.00E+00 | 0.00E+00 | 0.00E+00 | 0.00E+00 | 0.00E+00 | 0.00E+00 | 7.19E-12 | 7.41E-12 |
| Benzo(k)fluoranthene   | 2.24E-13 | 2.97E-12 | 4.45E-13 | 0.00E+00 | 0.00E+00 | 0.00E+00 | 3.77E-12 | 0.00E+00 | 0.00E+00 | 0.00E+00 | 0.00E+00 | 0.00E+00 | 0.00E+00 | 7.19E-12 | 7.41E-12 |
| Chrysene               | 2.24E-14 | 2.97E-13 | 4.45E-14 | 0.00E+00 | 0.00E+00 | 0.00E+00 | 3.77E-13 | 0.00E+00 | 0.00E+00 | 0.00E+00 | 0.00E+00 | 0.00E+00 | 0.00E+00 | 7.19E-13 | 7.41E-13 |
| SUM                    | 1.11E-07 | 1.14E-07 | 1.80E-08 | 0.00E+00 | 0.00E+00 | 0.00E+00 | 1.43E-07 | 0.00E+00 | 0.00E+00 | 0.00E+00 | 0.00E+00 | 0.00E+00 | 0.00E+00 | 2.75E-07 | 3.86E-07 |

| CHEM                   | INHAL  | DERM   | SOIL  | MOTHER | FISH  | WATER | VEG    | DAIRY | BEEF  | CHICK | PIG   | EGG   | MEAT  | ORAL   | TOTAL   |
|------------------------|--------|--------|-------|--------|-------|-------|--------|-------|-------|-------|-------|-------|-------|--------|---------|
| PAHs                   | 2.19%  | 29.02% | 4.35% | 0.00%  | 0.00% | 0.00% | 36.79% | 0.00% | 0.00% | 0.00% | 0.00% | 0.00% | 0.00% | 70.21% | 72.54%  |
| Chromium (Hex)         | 12.33% | 0.00%  | 0.00% | 0.00%  | 0.00% | 0.00% | 0.00%  | 0.00% | 0.00% | 0.00% | 0.00% | 0.00% | 0.00% | 0.00%  | 12.33%  |
| Formaldehyde           | 11.37% | 0.00%  | 0.00% | 0.00%  | 0.00% | 0.00% | 0.00%  | 0.00% | 0.00% | 0.00% | 0.00% | 0.00% | 0.00% | 0.00%  | 11.37%  |
| Arsenic                | 0.24%  | 0.57%  | 0.28% | 0.00%  | 0.00% | 0.00% | 0.05%  | 0.00% | 0.00% | 0.00% | 0.00% | 0.00% | 0.00% | 0.90%  | 1.14%   |
| Benzene                | 0.91%  | 0.00%  | 0.00% | 0.00%  | 0.00% | 0.00% | 0.00%  | 0.00% | 0.00% | 0.00% | 0.00% | 0.00% | 0.00% | 0.00%  | 0.91%   |
| Acetaldehyde           | 0.69%  | 0.00%  | 0.00% | 0.00%  | 0.00% | 0.00% | 0.00%  | 0.00% | 0.00% | 0.00% | 0.00% | 0.00% | 0.00% | 0.00%  | 0.69%   |
| Nickel                 | 0.27%  | 0.00%  | 0.00% | 0.00%  | 0.00% | 0.00% | 0.00%  | 0.00% | 0.00% | 0.00% | 0.00% | 0.00% | 0.00% | 0.00%  | 0.27%   |
| Ethyl Benzene          | 0.20%  | 0.00%  | 0.00% | 0.00%  | 0.00% | 0.00% | 0.00%  | 0.00% | 0.00% | 0.00% | 0.00% | 0.00% | 0.00% | 0.00%  | 0.20%   |
| 1,3-Butadiene          | 0.18%  | 0.00%  | 0.00% | 0.00%  | 0.00% | 0.00% | 0.00%  | 0.00% | 0.00% | 0.00% | 0.00% | 0.00% | 0.00% | 0.00%  | 0.18%   |
| Naphthalene            | 0.11%  | 0.00%  | 0.00% | 0.00%  | 0.00% | 0.00% | 0.00%  | 0.00% | 0.00% | 0.00% | 0.00% | 0.00% | 0.00% | 0.00%  | 0.11%   |
| Cadmium                | 0.11%  | 0.00%  | 0.00% | 0.00%  | 0.00% | 0.00% | 0.00%  | 0.00% | 0.00% | 0.00% | 0.00% | 0.00% | 0.00% | 0.00%  | 0.11%   |
| Lead                   | 0.01%  | 0.00%  | 0.02% | 0.00%  | 0.00% | 0.00% | 0.01%  | 0.00% | 0.00% | 0.00% | 0.00% | 0.00% | 0.00% | 0.03%  | 0.04%   |
| Beryllium              | 0.03%  | 0.00%  | 0.00% | 0.00%  | 0.00% | 0.00% | 0.00%  | 0.00% | 0.00% | 0.00% | 0.00% | 0.00% | 0.00% | 0.00%  | 0.03%   |
| Benzo(a)pyrene         | 0.00%  | 0.01%  | 0.00% | 0.00%  | 0.00% | 0.00% | 0.01%  | 0.00% | 0.00% | 0.00% | 0.00% | 0.00% | 0.00% | 0.02%  | 0.02%   |
| Dibenz(a,h)anthracene  | 0.00%  | 0.00%  | 0.00% | 0.00%  | 0.00% | 0.00% | 0.00%  | 0.00% | 0.00% | 0.00% | 0.00% | 0.00% | 0.00% | 0.01%  | 0.01%   |
| Benzo(a)anthracene     | 0.00%  | 0.00%  | 0.00% | 0.00%  | 0.00% | 0.00% | 0.00%  | 0.00% | 0.00% | 0.00% | 0.00% | 0.00% | 0.00% | 0.00%  | 0.00%   |
| Indeno(1,2,3-cd)pyrene | 0.00%  | 0.00%  | 0.00% | 0.00%  | 0.00% | 0.00% | 0.00%  | 0.00% | 0.00% | 0.00% | 0.00% | 0.00% | 0.00% | 0.00%  | 0.00%   |
| Benzo(b)fluoranthene   | 0.00%  | 0.00%  | 0.00% | 0.00%  | 0.00% | 0.00% | 0.00%  | 0.00% | 0.00% | 0.00% | 0.00% | 0.00% | 0.00% | 0.00%  | 0.00%   |
| Benzo(k)fluoranthene   | 0.00%  | 0.00%  | 0.00% | 0.00%  | 0.00% | 0.00% | 0.00%  | 0.00% | 0.00% | 0.00% | 0.00% | 0.00% | 0.00% | 0.00%  | 0.00%   |
| Chrysene               | 0.00%  | 0.00%  | 0.00% | 0.00%  | 0.00% | 0.00% | 0.00%  | 0.00% | 0.00% | 0.00% | 0.00% | 0.00% | 0.00% | 0.00%  | 0.00%   |
| SUM                    | 28.76% | 29.53% | 4.66% | 0.00%  | 0.00% | 0.00% | 37.05% | 0.00% | 0.00% | 0.00% | 0.00% | 0.00% | 0.00% | 71.24% | 100.00% |

Oral is the combined risk of all non-inhalation pathways.

Appendix C  
Maximum Exposed Individual Worker and Contribution

Valero Wilmington Refinery  
New Cogeneration Unit

| CHEM                   | INHAL    | DERM     | SOIL     | MOTHER   | FISH     | WATER    | VEG      | DAIRY    | BEEF     | CHICK    | PIG      | EGG      | MEAT     | ORAL     | TOTAL    |
|------------------------|----------|----------|----------|----------|----------|----------|----------|----------|----------|----------|----------|----------|----------|----------|----------|
| PAHs                   | 2.89E-09 | 6.62E-08 | 8.61E-09 | 0.00E+00 | 0.00E+00 | 0.00E+00 | 0.00E+00 | 0.00E+00 | 0.00E+00 | 0.00E+00 | 0.00E+00 | 0.00E+00 | 0.00E+00 | 7.48E-08 | 7.77E-08 |
| Chromium (Hex)         | 1.46E-08 | 0.00E+00 | 0.00E+00 | 0.00E+00 | 0.00E+00 | 0.00E+00 | 0.00E+00 | 0.00E+00 | 0.00E+00 | 0.00E+00 | 0.00E+00 | 0.00E+00 | 0.00E+00 | 0.00E+00 | 1.46E-08 |
| Formaldehyde           | 1.35E-08 | 0.00E+00 | 0.00E+00 | 0.00E+00 | 0.00E+00 | 0.00E+00 | 0.00E+00 | 0.00E+00 | 0.00E+00 | 0.00E+00 | 0.00E+00 | 0.00E+00 | 0.00E+00 | 0.00E+00 | 1.35E-08 |
| Arsenic                | 2.83E-10 | 1.31E-09 | 5.51E-10 | 0.00E+00 | 0.00E+00 | 0.00E+00 | 0.00E+00 | 0.00E+00 | 0.00E+00 | 0.00E+00 | 0.00E+00 | 0.00E+00 | 0.00E+00 | 1.86E-09 | 2.14E-09 |
| Benzene                | 1.08E-10 | 0.00E+00 | 0.00E+00 | 0.00E+00 | 0.00E+00 | 0.00E+00 | 0.00E+00 | 0.00E+00 | 0.00E+00 | 0.00E+00 | 0.00E+00 | 0.00E+00 | 0.00E+00 | 0.00E+00 | 1.08E-10 |
| Acetaldehyde           | 8.17E-10 | 0.00E+00 | 0.00E+00 | 0.00E+00 | 0.00E+00 | 0.00E+00 | 0.00E+00 | 0.00E+00 | 0.00E+00 | 0.00E+00 | 0.00E+00 | 0.00E+00 | 0.00E+00 | 0.00E+00 | 8.17E-10 |
| Nickel                 | 3.26E-10 | 0.00E+00 | 0.00E+00 | 0.00E+00 | 0.00E+00 | 0.00E+00 | 0.00E+00 | 0.00E+00 | 0.00E+00 | 0.00E+00 | 0.00E+00 | 0.00E+00 | 0.00E+00 | 0.00E+00 | 3.26E-10 |
| Ethyl Benzene          | 2.40E-10 | 0.00E+00 | 0.00E+00 | 0.00E+00 | 0.00E+00 | 0.00E+00 | 0.00E+00 | 0.00E+00 | 0.00E+00 | 0.00E+00 | 0.00E+00 | 0.00E+00 | 0.00E+00 | 0.00E+00 | 2.40E-10 |
| 1,3-Butadiene          | 2.12E-10 | 0.00E+00 | 0.00E+00 | 0.00E+00 | 0.00E+00 | 0.00E+00 | 0.00E+00 | 0.00E+00 | 0.00E+00 | 0.00E+00 | 0.00E+00 | 0.00E+00 | 0.00E+00 | 0.00E+00 | 2.12E-10 |
| Naphthalene            | 1.33E-10 | 0.00E+00 | 0.00E+00 | 0.00E+00 | 0.00E+00 | 0.00E+00 | 0.00E+00 | 0.00E+00 | 0.00E+00 | 0.00E+00 | 0.00E+00 | 0.00E+00 | 0.00E+00 | 0.00E+00 | 1.33E-10 |
| Cadmium                | 1.28E-10 | 0.00E+00 | 0.00E+00 | 0.00E+00 | 0.00E+00 | 0.00E+00 | 0.00E+00 | 0.00E+00 | 0.00E+00 | 0.00E+00 | 0.00E+00 | 0.00E+00 | 0.00E+00 | 0.00E+00 | 1.28E-10 |
| Lead                   | 1.10E-11 | 2.05E-11 | 3.47E-11 | 0.00E+00 | 0.00E+00 | 0.00E+00 | 0.00E+00 | 0.00E+00 | 0.00E+00 | 0.00E+00 | 0.00E+00 | 0.00E+00 | 0.00E+00 | 5.52E-11 | 6.62E-11 |
| Beryllium              | 2.96E-11 | 0.00E+00 | 0.00E+00 | 0.00E+00 | 0.00E+00 | 0.00E+00 | 0.00E+00 | 0.00E+00 | 0.00E+00 | 0.00E+00 | 0.00E+00 | 0.00E+00 | 0.00E+00 | 0.00E+00 | 2.96E-11 |
| Benz(a)pyrene          | 7.64E-13 | 1.75E-11 | 2.28E-12 | 0.00E+00 | 0.00E+00 | 0.00E+00 | 0.00E+00 | 0.00E+00 | 0.00E+00 | 0.00E+00 | 0.00E+00 | 0.00E+00 | 0.00E+00 | 1.98E-11 | 2.06E-11 |
| Dibenz(a,h)anthracene  | 8.04E-13 | 5.99E-12 | 7.79E-13 | 0.00E+00 | 0.00E+00 | 0.00E+00 | 0.00E+00 | 0.00E+00 | 0.00E+00 | 0.00E+00 | 0.00E+00 | 0.00E+00 | 0.00E+00 | 6.77E-12 | 7.58E-12 |
| Benz(a)anthracene      | 7.64E-14 | 1.75E-12 | 2.28E-13 | 0.00E+00 | 0.00E+00 | 0.00E+00 | 0.00E+00 | 0.00E+00 | 0.00E+00 | 0.00E+00 | 0.00E+00 | 0.00E+00 | 0.00E+00 | 1.98E-12 | 2.06E-12 |
| Indeno(1,2,3-cd)pyrene | 7.64E-14 | 1.75E-12 | 2.28E-13 | 0.00E+00 | 0.00E+00 | 0.00E+00 | 0.00E+00 | 0.00E+00 | 0.00E+00 | 0.00E+00 | 0.00E+00 | 0.00E+00 | 0.00E+00 | 1.98E-12 | 2.06E-12 |
| Benz(b)fluoranthene    | 7.64E-14 | 1.75E-12 | 2.28E-13 | 0.00E+00 | 0.00E+00 | 0.00E+00 | 0.00E+00 | 0.00E+00 | 0.00E+00 | 0.00E+00 | 0.00E+00 | 0.00E+00 | 0.00E+00 | 1.98E-12 | 2.06E-12 |
| Benz(k)fluoranthene    | 7.64E-14 | 1.75E-12 | 2.28E-13 | 0.00E+00 | 0.00E+00 | 0.00E+00 | 0.00E+00 | 0.00E+00 | 0.00E+00 | 0.00E+00 | 0.00E+00 | 0.00E+00 | 0.00E+00 | 1.98E-12 | 2.06E-12 |
| Chrysene               | 7.64E-15 | 1.75E-13 | 2.28E-14 | 0.00E+00 | 0.00E+00 | 0.00E+00 | 0.00E+00 | 0.00E+00 | 0.00E+00 | 0.00E+00 | 0.00E+00 | 0.00E+00 | 0.00E+00 | 1.98E-13 | 2.06E-13 |
| SUM                    | 3.42E-08 | 6.76E-08 | 9.20E-09 | 0.00E+00 | 0.00E+00 | 0.00E+00 | 0.00E+00 | 0.00E+00 | 0.00E+00 | 0.00E+00 | 0.00E+00 | 0.00E+00 | 0.00E+00 | 7.68E-08 | 1.11E-07 |

| CHEM                   | INHAL  | DERM   | SOIL  | MOTHER | FISH  | WATER | VEG   | DAIRY | BEEF  | CHICK | PIG   | EGG   | MEAT  | ORAL   | TOTAL   |
|------------------------|--------|--------|-------|--------|-------|-------|-------|-------|-------|-------|-------|-------|-------|--------|---------|
| PAHs                   | 2.60%  | 59.64% | 7.76% | 0.00%  | 0.00% | 0.00% | 0.00% | 0.00% | 0.00% | 0.00% | 0.00% | 0.00% | 0.00% | 67.39% | 70.00%  |
| Chromium (Hex)         | 13.15% | 0.00%  | 0.00% | 0.00%  | 0.00% | 0.00% | 0.00% | 0.00% | 0.00% | 0.00% | 0.00% | 0.00% | 0.00% | 0.00%  | 13.15%  |
| Formaldehyde           | 12.16% | 0.00%  | 0.00% | 0.00%  | 0.00% | 0.00% | 0.00% | 0.00% | 0.00% | 0.00% | 0.00% | 0.00% | 0.00% | 0.00%  | 12.16%  |
| Arsenic                | 0.25%  | 1.18%  | 0.50% | 0.00%  | 0.00% | 0.00% | 0.00% | 0.00% | 0.00% | 0.00% | 0.00% | 0.00% | 0.00% | 1.68%  | 1.93%   |
| Benzene                | 0.97%  | 0.00%  | 0.00% | 0.00%  | 0.00% | 0.00% | 0.00% | 0.00% | 0.00% | 0.00% | 0.00% | 0.00% | 0.00% | 0.00%  | 0.97%   |
| Acetaldehyde           | 0.74%  | 0.00%  | 0.00% | 0.00%  | 0.00% | 0.00% | 0.00% | 0.00% | 0.00% | 0.00% | 0.00% | 0.00% | 0.00% | 0.00%  | 0.74%   |
| Nickel                 | 0.29%  | 0.00%  | 0.00% | 0.00%  | 0.00% | 0.00% | 0.00% | 0.00% | 0.00% | 0.00% | 0.00% | 0.00% | 0.00% | 0.00%  | 0.29%   |
| Ethyl Benzene          | 0.22%  | 0.00%  | 0.00% | 0.00%  | 0.00% | 0.00% | 0.00% | 0.00% | 0.00% | 0.00% | 0.00% | 0.00% | 0.00% | 0.00%  | 0.22%   |
| 1,3-Butadiene          | 0.19%  | 0.00%  | 0.00% | 0.00%  | 0.00% | 0.00% | 0.00% | 0.00% | 0.00% | 0.00% | 0.00% | 0.00% | 0.00% | 0.00%  | 0.19%   |
| Naphthalene            | 0.12%  | 0.00%  | 0.00% | 0.00%  | 0.00% | 0.00% | 0.00% | 0.00% | 0.00% | 0.00% | 0.00% | 0.00% | 0.00% | 0.00%  | 0.12%   |
| Cadmium                | 0.12%  | 0.00%  | 0.03% | 0.00%  | 0.00% | 0.00% | 0.00% | 0.00% | 0.00% | 0.00% | 0.00% | 0.00% | 0.00% | 0.05%  | 0.06%   |
| Lead                   | 0.01%  | 0.02%  | 0.00% | 0.00%  | 0.00% | 0.00% | 0.00% | 0.00% | 0.00% | 0.00% | 0.00% | 0.00% | 0.00% | 0.00%  | 0.03%   |
| Beryllium              | 0.03%  | 0.00%  | 0.00% | 0.00%  | 0.00% | 0.00% | 0.00% | 0.00% | 0.00% | 0.00% | 0.00% | 0.00% | 0.00% | 0.00%  | 0.03%   |
| Benz(a)pyrene          | 0.00%  | 0.02%  | 0.00% | 0.00%  | 0.00% | 0.00% | 0.00% | 0.00% | 0.00% | 0.00% | 0.00% | 0.00% | 0.00% | 0.02%  | 0.02%   |
| Dibenz(a,h)anthracene  | 0.00%  | 0.01%  | 0.00% | 0.00%  | 0.00% | 0.00% | 0.00% | 0.00% | 0.00% | 0.00% | 0.00% | 0.00% | 0.00% | 0.01%  | 0.01%   |
| Benz(a)anthracene      | 0.00%  | 0.00%  | 0.00% | 0.00%  | 0.00% | 0.00% | 0.00% | 0.00% | 0.00% | 0.00% | 0.00% | 0.00% | 0.00% | 0.00%  | 0.00%   |
| Indeno(1,2,3-cd)pyrene | 0.00%  | 0.00%  | 0.00% | 0.00%  | 0.00% | 0.00% | 0.00% | 0.00% | 0.00% | 0.00% | 0.00% | 0.00% | 0.00% | 0.00%  | 0.00%   |
| Benz(b)fluoranthene    | 0.00%  | 0.00%  | 0.00% | 0.00%  | 0.00% | 0.00% | 0.00% | 0.00% | 0.00% | 0.00% | 0.00% | 0.00% | 0.00% | 0.00%  | 0.00%   |
| Benz(k)fluoranthene    | 0.00%  | 0.00%  | 0.00% | 0.00%  | 0.00% | 0.00% | 0.00% | 0.00% | 0.00% | 0.00% | 0.00% | 0.00% | 0.00% | 0.00%  | 0.00%   |
| Chrysene               | 0.00%  | 0.00%  | 0.00% | 0.00%  | 0.00% | 0.00% | 0.00% | 0.00% | 0.00% | 0.00% | 0.00% | 0.00% | 0.00% | 0.00%  | 0.00%   |
| SUM                    | 30.81% | 60.90% | 8.29% | 0.00%  | 0.00% | 0.00% | 0.00% | 0.00% | 0.00% | 0.00% | 0.00% | 0.00% | 0.00% | 69.19% | 100.00% |

Oral is the combined risk of all non-inhalation pathways.

Appendix C  
 Maximum Chronic Hazard Index and Contribution

Valero Wilmington Refinery  
 New Cogeneration Unit

| CHEM             | CV       | CNS      | BONE     | DEVEL    | ENDO     | EYE      | GILV     | IMMUN    | KIDN     | REPRO    | RESP     | SKIN     | BLOOD    | MAX      | RESP   |
|------------------|----------|----------|----------|----------|----------|----------|----------|----------|----------|----------|----------|----------|----------|----------|--------|
| Formaldehyde     | 0.00E+00 | 0.00E+00 | 0.00E+00 | 0.00E+00 | 0.00E+00 | 0.00E+00 | 0.00E+00 | 0.00E+00 | 0.00E+00 | 0.00E+00 | 1.24E-03 | 0.00E+00 | 0.00E+00 | 1.24E-03 | 42.8%  |
| Ammonia          | 0.00E+00 | 0.00E+00 | 0.00E+00 | 0.00E+00 | 0.00E+00 | 0.00E+00 | 0.00E+00 | 0.00E+00 | 0.00E+00 | 0.00E+00 | 8.13E-04 | 0.00E+00 | 0.00E+00 | 8.13E-04 | 28.0%  |
| Arsenic          | 5.34E-04 | 5.34E-04 | 0.00E+00 | 5.34E-04 | 0.00E+00 | 0.00E+00 | 0.00E+00 | 0.00E+00 | 0.00E+00 | 0.00E+00 | 1.48E-04 | 5.34E-04 | 0.00E+00 | 5.34E-04 | 18.4%  |
| Hydrogen Sulfide | 0.00E+00 | 0.00E+00 | 0.00E+00 | 0.00E+00 | 0.00E+00 | 0.00E+00 | 0.00E+00 | 0.00E+00 | 0.00E+00 | 0.00E+00 | 1.48E-04 | 0.00E+00 | 0.00E+00 | 1.48E-04 | 5.1%   |
| Nickel           | 0.00E+00 | 0.00E+00 | 0.00E+00 | 0.00E+00 | 0.00E+00 | 0.00E+00 | 6.15E-07 | 0.00E+00 | 0.00E+00 | 0.00E+00 | 1.24E-04 | 0.00E+00 | 1.24E-04 | 1.24E-04 | 4.3%   |
| Acetaldehyde     | 0.00E+00 | 0.00E+00 | 0.00E+00 | 0.00E+00 | 0.00E+00 | 0.00E+00 | 0.00E+00 | 0.00E+00 | 0.00E+00 | 0.00E+00 | 1.01E-05 | 0.00E+00 | 0.00E+00 | 1.01E-05 | 0.3%   |
| Beryllium        | 0.00E+00 | 0.00E+00 | 0.00E+00 | 0.00E+00 | 0.00E+00 | 0.00E+00 | 1.08E-07 | 8.75E-06 | 0.00E+00 | 0.00E+00 | 8.75E-06 | 0.00E+00 | 0.00E+00 | 8.75E-06 | 0.3%   |
| Cadmium          | 0.00E+00 | 0.00E+00 | 0.00E+00 | 0.00E+00 | 0.00E+00 | 0.00E+00 | 0.00E+00 | 0.00E+00 | 9.08E-06 | 0.00E+00 | 7.43E-06 | 0.00E+00 | 0.00E+00 | 9.08E-06 | 0.3%   |
| Toluene          | 0.00E+00 | 6.41E-06 | 0.00E+00 | 6.41E-06 | 0.00E+00 | 0.00E+00 | 0.00E+00 | 0.00E+00 | 0.00E+00 | 0.00E+00 | 6.41E-06 | 0.00E+00 | 0.00E+00 | 6.41E-06 | 0.2%   |
| Chromium (Hex)   | 0.00E+00 | 0.00E+00 | 0.00E+00 | 0.00E+00 | 0.00E+00 | 0.00E+00 | 0.00E+00 | 0.00E+00 | 0.00E+00 | 0.00E+00 | 2.48E-06 | 0.00E+00 | 8.77E-08 | 2.48E-06 | 0.1%   |
| Naphthalene      | 0.00E+00 | 0.00E+00 | 0.00E+00 | 0.00E+00 | 0.00E+00 | 0.00E+00 | 0.00E+00 | 0.00E+00 | 0.00E+00 | 0.00E+00 | 2.14E-06 | 0.00E+00 | 0.00E+00 | 2.14E-06 | 0.1%   |
| Propylene        | 0.00E+00 | 0.00E+00 | 0.00E+00 | 0.00E+00 | 0.00E+00 | 0.00E+00 | 0.00E+00 | 0.00E+00 | 0.00E+00 | 0.00E+00 | 1.90E-06 | 0.00E+00 | 0.00E+00 | 1.90E-06 | 0.1%   |
| Xylenes          | 0.00E+00 | 1.30E-06 | 0.00E+00 | 0.00E+00 | 0.00E+00 | 0.00E+00 | 0.00E+00 | 0.00E+00 | 0.00E+00 | 0.00E+00 | 1.30E-06 | 0.00E+00 | 0.00E+00 | 1.30E-06 | 0.0%   |
| Mercury          | 0.00E+00 | 1.87E-04 | 0.00E+00 | 1.87E-04 | 0.00E+00 | 0.00E+00 | 0.00E+00 | 0.00E+00 | 1.87E-04 | 0.00E+00 | 0.00E+00 | 0.00E+00 | 0.00E+00 | 1.87E-04 | 0.0%   |
| Manganese        | 0.00E+00 | 3.53E-05 | 0.00E+00 | 0.00E+00 | 0.00E+00 | 0.00E+00 | 0.00E+00 | 0.00E+00 | 0.00E+00 | 0.00E+00 | 0.00E+00 | 0.00E+00 | 0.00E+00 | 3.53E-05 | 0.0%   |
| Phenol           | 4.81E-06 | 4.81E-06 | 0.00E+00 | 0.00E+00 | 0.00E+00 | 0.00E+00 | 4.81E-06 | 0.00E+00 | 4.81E-06 | 0.00E+00 | 0.00E+00 | 0.00E+00 | 0.00E+00 | 4.81E-06 | 0.0%   |
| Benzene          | 0.00E+00 | 3.13E-06 | 0.00E+00 | 3.13E-06 | 0.00E+00 | 0.00E+00 | 0.00E+00 | 0.00E+00 | 0.00E+00 | 0.00E+00 | 0.00E+00 | 0.00E+00 | 3.13E-06 | 3.13E-06 | 0.0%   |
| 1,3-Butadiene    | 0.00E+00 | 0.00E+00 | 0.00E+00 | 0.00E+00 | 0.00E+00 | 0.00E+00 | 0.00E+00 | 0.00E+00 | 0.00E+00 | 3.07E-07 | 0.00E+00 | 0.00E+00 | 0.00E+00 | 3.07E-07 | 0.0%   |
| Ethyl Benzene    | 0.00E+00 | 0.00E+00 | 0.00E+00 | 2.39E-07 | 2.39E-07 | 0.00E+00 | 2.39E-07 | 0.00E+00 | 2.39E-07 | 0.00E+00 | 0.00E+00 | 0.00E+00 | 0.00E+00 | 2.39E-07 | 0.0%   |
| Hexane           | 0.00E+00 | 1.23E-07 | 0.00E+00 | 0.00E+00 | 0.00E+00 | 0.00E+00 | 0.00E+00 | 0.00E+00 | 0.00E+00 | 0.00E+00 | 0.00E+00 | 0.00E+00 | 0.00E+00 | 1.23E-07 | 0.0%   |
| Selenium         | 7.38E-08 | 7.38E-08 | 0.00E+00 | 0.00E+00 | 0.00E+00 | 0.00E+00 | 7.38E-08 | 0.00E+00 | 0.00E+00 | 0.00E+00 | 0.00E+00 | 0.00E+00 | 0.00E+00 | 7.38E-08 | 0.0%   |
| Chlorobenzene    | 0.00E+00 | 0.00E+00 | 0.00E+00 | 0.00E+00 | 0.00E+00 | 0.00E+00 | 2.41E-08 | 0.00E+00 | 2.41E-08 | 2.41E-08 | 0.00E+00 | 0.00E+00 | 0.00E+00 | 2.41E-08 | 0.0%   |
| SUM              | 5.38E-04 | 7.72E-04 | 0.00E+00 | 7.30E-04 | 2.39E-07 | 0.00E+00 | 5.87E-06 | 8.75E-06 | 2.01E-04 | 3.31E-07 | 2.90E-03 | 5.34E-04 | 1.28E-04 | 2.90E-04 | 100.0% |

Appendix C  
Maximum Acute Hazard Index and Contribution

Valero Wilmington Refinery  
New Cogeneration Unit

| CHEM             | CV       | CNS      | BONE     | DEVEL    | ENDO     | EYE      | GILV     | IMMUN    | KIDN     | REPRO    | RESP     | SKIN     | BLOOD    | MAX      | EYE    |
|------------------|----------|----------|----------|----------|----------|----------|----------|----------|----------|----------|----------|----------|----------|----------|--------|
| Formaldehyde     | 0.00E+00 | 0.00E+00 | 0.00E+00 | 0.00E+00 | 0.00E+00 | 9.66E-03 | 0.00E+00 | 0.00E+00 | 0.00E+00 | 0.00E+00 | 0.00E+00 | 0.00E+00 | 0.00E+00 | 9.66E-03 | 61.5%  |
| Ammonia          | 0.00E+00 | 0.00E+00 | 0.00E+00 | 0.00E+00 | 0.00E+00 | 5.92E-03 | 0.00E+00 | 0.00E+00 | 0.00E+00 | 0.00E+00 | 5.92E-03 | 0.00E+00 | 0.00E+00 | 5.92E-03 | 37.7%  |
| Acetaldehyde     | 0.00E+00 | 0.00E+00 | 0.00E+00 | 0.00E+00 | 0.00E+00 | 1.44E-04 | 0.00E+00 | 0.00E+00 | 0.00E+00 | 0.00E+00 | 1.44E-04 | 0.00E+00 | 0.00E+00 | 1.44E-04 | 0.9%   |
| Phenol           | 0.00E+00 | 0.00E+00 | 0.00E+00 | 0.00E+00 | 0.00E+00 | 7.91E-06 | 0.00E+00 | 0.00E+00 | 0.00E+00 | 0.00E+00 | 7.91E-06 | 0.00E+00 | 0.00E+00 | 7.91E-06 | 0.1%   |
| Toluene          | 0.00E+00 | 2.48E-06 | 0.00E+00 | 2.48E-06 | 0.00E+00 | 2.48E-06 | 0.00E+00 | 0.00E+00 | 0.00E+00 | 2.48E-06 | 2.48E-06 | 0.00E+00 | 0.00E+00 | 2.48E-06 | 0.0%   |
| Xylenes          | 0.00E+00 | 0.00E+00 | 0.00E+00 | 0.00E+00 | 0.00E+00 | 3.02E-09 | 0.00E+00 | 0.00E+00 | 0.00E+00 | 0.00E+00 | 3.02E-09 | 0.00E+00 | 0.00E+00 | 3.02E-09 | 0.0%   |
| Hydrogen Sulfide | 0.00E+00 | 1.79E-03 | 0.00E+00 | 0.00E+00 | 0.00E+00 | 0.00E+00 | 0.00E+00 | 0.00E+00 | 0.00E+00 | 0.00E+00 | 0.00E+00 | 0.00E+00 | 0.00E+00 | 1.79E-03 | 0.0%   |
| Mercury          | 0.00E+00 | 1.67E-04 | 0.00E+00 | 1.67E-04 | 0.00E+00 | 0.00E+00 | 0.00E+00 | 0.00E+00 | 0.00E+00 | 0.00E+00 | 0.00E+00 | 0.00E+00 | 0.00E+00 | 1.67E-04 | 0.0%   |
| Arsenic          | 9.78E-05 | 9.78E-05 | 0.00E+00 | 9.78E-05 | 0.00E+00 | 0.00E+00 | 0.00E+00 | 0.00E+00 | 0.00E+00 | 0.00E+00 | 0.00E+00 | 0.00E+00 | 0.00E+00 | 9.78E-05 | 0.0%   |
| Nickel           | 0.00E+00 | 0.00E+00 | 0.00E+00 | 0.00E+00 | 0.00E+00 | 0.00E+00 | 0.00E+00 | 4.95E-05 | 0.00E+00 | 0.00E+00 | 4.95E-05 | 0.00E+00 | 0.00E+00 | 4.95E-05 | 0.0%   |
| Benzene          | 0.00E+00 | 0.00E+00 | 0.00E+00 | 6.89E-06 | 0.00E+00 | 0.00E+00 | 0.00E+00 | 6.89E-06 | 0.00E+00 | 6.89E-06 | 0.00E+00 | 0.00E+00 | 6.89E-06 | 6.89E-06 | 0.0%   |
| Copper           | 0.00E+00 | 0.00E+00 | 0.00E+00 | 0.00E+00 | 0.00E+00 | 0.00E+00 | 0.00E+00 | 0.00E+00 | 0.00E+00 | 0.00E+00 | 1.43E-06 | 0.00E+00 | 0.00E+00 | 1.43E-06 | 0.0%   |
| SUM              | 9.78E-05 | 2.05E-03 | 0.00E+00 | 2.74E-04 | 0.00E+00 | 1.57E-02 | 0.00E+00 | 5.64E-05 | 0.00E+00 | 9.37E-06 | 6.13E-03 | 0.00E+00 | 6.89E-06 | 1.57E-02 | 100.0% |

File: C:\HARP\PROJECTS\2709Val\Cogen1\2709 MEIR.txt 9/7/2011, 2:51:42PM

This file: C:\HARP\PROJECTS\2709Val\Cogen1\2709 MEIR.txt

Created by HARP Version 1.4d Build 23.09.07

Uses ISC Version 99155

Uses BPIP (Dated: 04112)

Creation date: 9/7/2011 2:51:33 PM

EXCEPTION REPORT

(there have been no changes or exceptions)

INPUT FILES:

Source-Receptor file: C:\HARP\PROJECTS\2709Val\Cogen1\2709CGN1.SRC

Averaging period adjustment factors file: not applicable

Emission rates file: database

Site parameters file: C:\HARP\PROJECTS\resident pathway.sit

Coordinate system: UTM NAD27

Screening mode is OFF

Exposure duration: 70 year (adult resident)

Analysis method: Derived (Adjusted) Method

Health effect: Cancer Risk

Receptor(s): 669

Sources(s): All

Chemicals(s): All

SITE PARAMETERS

DEPOSITION

Deposition rate (m/s) 0.02

DRINKING WATER

\*\*\* Pathway disabled \*\*\*

FISH

\*\*\* Pathway disabled \*\*\*

PASTURE

\*\*\* Pathway disabled \*\*\*

HOME GROWN PRODUCE

HUMAN INGESTION

Fraction of ingested leafy vegetable

from home grown source 0.052

Fraction of ingested exposed vegetable

from home grown source 0.052

Fraction of ingested protected vegetable

from home grown source 0.052

Fraction of ingested root vegetable

from home grown source 0.052

PIGS, CHICKENS AND EGGS

\*\*\* Pathway disabled \*\*\*

DERMAL ABSORPTION

\*\*\* Pathway enabled \*\*\*

SOIL INGESTION

\*\*\* Pathway enabled \*\*\*

MOTHER'S MILK

\*\*\* Pathway enabled \*\*\*

CHEMICAL CROSS-REFERENCE TABLE AND BACKGROUND CONCENTRATIONS

| CHEM CAS | ABBREVIATION | POLLUTANT NAME   | BACKGROUND (ug/m <sup>3</sup> ) |
|----------|--------------|------------------|---------------------------------|
| 0001     | 50000        | Formaldehyde     | 0.000E+00                       |
| 0002     | 50328        | B[al]p           | 0.000E+00                       |
| 0003     | 53703        | D[a,h]anthracen  | 0.000E+00                       |
| 0004     | 56553        | B[a]anthracene   | 0.000E+00                       |
| 0005     | 71432        | Benzene          | 0.000E+00                       |
| 0006     | 75070        | Acetaldehyde     | 0.000E+00                       |
| 0007     | 85018        | Phenanthrene     | 0.000E+00                       |
| 0008     | 86737        | Fluorene         | 0.000E+00                       |
| 0009     | 91203        | Naphthalene      | 0.000E+00                       |
| 0010     | 91576        | 2Methnaphthalene | 0.000E+00                       |
| 0011     | 100414       | Ethyl Benzene    | 0.000E+00                       |
| 0012     | 108883       | Toluene          | 0.000E+00                       |
| 0013     | 108907       | Chlorobenzn      | 0.000E+00                       |
| 0014     | 108952       | Phenol           | 0.000E+00                       |
| 0015     | 115071       | Propylene        | 0.000E+00                       |
| 0016     | 120127       | Anthracene       | 0.000E+00                       |
| 0017     | 129000       | Pyrene           | 0.000E+00                       |
| 0018     | 191242       | B[g,h,i]perylene | 0.000E+00                       |
| 0019     | 192972       | B[e]pyrene       | 0.000E+00                       |
| 0020     | 193395       | In[1,2,3-cd]pyr  | 0.000E+00                       |
| 0021     | 198550       | Perylene         | 0.000E+00                       |
| 0022     | 205992       | B[b]fluoranthen  | 0.000E+00                       |
| 0023     | 206440       | Fluoranthene     | 0.000E+00                       |
| 0024     | 207089       | B[k]fluoranthen  | 0.000E+00                       |
| 0025     | 208968       | Acenaphthylene   | 0.000E+00                       |
| 0026     | 218019       | Chrysene         | 0.000E+00                       |
| 0027     | 7439921      | Lead             | 0.000E+00                       |
| 0028     | 7439965      | Manganese        | 0.000E+00                       |
| 0029     | 7439976      | Mercury          | 0.000E+00                       |
| 0030     | 7440020      | Nickel           | 0.000E+00                       |
| 0031     | 7440224      | Silver           | 0.000E+00                       |
| 0032     | 7440280      | Thallium         | 0.000E+00                       |
| 0033     | 7440360      | Antimony         | 0.000E+00                       |
| 0034     | 7440382      | Arsenic          | 0.000E+00                       |



File: C:\HARP\PROJECTS\2709ValCogen1\2709 MEIR.txt 9/7/2011, 2:51:42PM

| CHEM                   | CAS      | ABBREVIATION     | CancerPF(Inh)<br>(mg/kg-d)^-1 | CancerPF(Oral)<br>(mg/kg-d)^-1 | ChronicREL(Inh)<br>ug/m^3 | ChronicREL(Oral)<br>mg/kg-d | AcuteREL<br>ug/m^3 |
|------------------------|----------|------------------|-------------------------------|--------------------------------|---------------------------|-----------------------------|--------------------|
| 0035                   | 7440393  | Barium           |                               |                                |                           |                             | 0.000E+00          |
| 0036                   | 7440417  | Beryllium        |                               |                                |                           |                             | 0.000E+00          |
| 0037                   | 7440439  | Cadmium          |                               |                                |                           |                             | 0.000E+00          |
| 0038                   | 7440473  | Chromium         |                               |                                |                           |                             | 0.000E+00          |
| 0039                   | 7440508  | Copper           |                               |                                |                           |                             | 0.000E+00          |
| 0040                   | 7440666  | Zinc             |                               |                                |                           |                             | 0.000E+00          |
| 0041                   | 7723140  | Phosphorus       |                               |                                |                           |                             | 0.000E+00          |
| 0042                   | 7782492  | Selenium         |                               |                                |                           |                             | 0.000E+00          |
| 0043                   | 7783064  | H2S              |                               |                                |                           |                             | 0.000E+00          |
| 0044                   | 18540299 | Cr(VI)           |                               |                                |                           |                             | 0.000E+00          |
| 0045                   | 7664417  | NH3              |                               |                                |                           |                             | 0.000E+00          |
| 0046                   | 106990   | 1,3-Butadiene    |                               |                                |                           |                             | 0.000E+00          |
| 0047                   | 1330207  | Xylenes          |                               |                                |                           |                             | 0.000E+00          |
| 0048                   | 1151     | PAHS-w/o         |                               |                                |                           |                             | 0.000E+00          |
| 0049                   | 110543   | Hexane           |                               |                                |                           |                             | 0.000E+00          |
| CHEMICAL HEALTH VALUES |          |                  |                               |                                |                           |                             |                    |
| 0001                   | 50000    | Formaldehyde     | 2.10E-02                      | *                              | 9.00E+00                  | *                           | 5.50E+01           |
| 0002                   | 50328    | B[a]P            | 3.90E+00                      | 1.20E+01                       | *                         | *                           | *                  |
| 0003                   | 53703    | D[a,h]anthracen  | 4.10E+00                      | 4.10E+00                       | *                         | *                           | *                  |
| 0004                   | 56553    | B[a]anthracene   | 3.90E-01                      | 1.20E+00                       | *                         | *                           | *                  |
| 0005                   | 71432    | Benzene          | 1.00E-01                      | *                              | 6.00E+01                  | *                           | 1.30E+03           |
| 0006                   | 75070    | Acetaldehyde     | 1.00E-02                      | *                              | 1.40E+02                  | *                           | 4.70E+02           |
| 0007                   | 85018    | Phenanthrene     | *                             | *                              | *                         | *                           | *                  |
| 0008                   | 86737    | Fluorene         | *                             | *                              | *                         | *                           | *                  |
| 0009                   | 91203    | Naphthalene      | 1.20E-01                      | *                              | 9.00E+00                  | *                           | *                  |
| 0010                   | 91576    | 2MeNaphthalene   | *                             | *                              | *                         | *                           | *                  |
| 0011                   | 100414   | Ethyl Benzene    | 8.70E-03                      | *                              | 2.00E+03                  | *                           | 3.70E+04           |
| 0012                   | 108883   | Toluene          | *                             | *                              | 3.00E+02                  | *                           | *                  |
| 0013                   | 108907   | Chlorobenzn      | *                             | *                              | 1.00E+03                  | *                           | *                  |
| 0014                   | 108952   | Phenol           | *                             | *                              | 2.00E+02                  | *                           | 5.80E+03           |
| 0015                   | 115071   | Propylene        | *                             | *                              | *                         | *                           | *                  |
| 0016                   | 120127   | Anthracene       | *                             | *                              | 3.00E+03                  | *                           | *                  |
| 0017                   | 129000   | Pyrene           | *                             | *                              | *                         | *                           | *                  |
| 0018                   | 191242   | B[g,h,i]perylene | *                             | *                              | *                         | *                           | *                  |
| 0019                   | 192972   | B[e]pyrene       | *                             | *                              | *                         | *                           | *                  |
| 0020                   | 193395   | In[1,2,3-cd]pyr  | 3.90E-01                      | 1.20E+00                       | *                         | *                           | *                  |
| 0021                   | 198550   | Perylene         | *                             | *                              | *                         | *                           | *                  |
| 0022                   | 205992   | B[b]fluoranthen  | 3.90E-01                      | 1.20E+00                       | *                         | *                           | *                  |
| 0023                   | 206440   | Fluoranthene     | *                             | *                              | *                         | *                           | *                  |
| 0024                   | 207089   | B[k]fluoranthen  | 3.90E-01                      | 1.20E+00                       | *                         | *                           | *                  |
| 0025                   | 208968   | Acenaphthylene   | *                             | *                              | *                         | *                           | *                  |
| 0026                   | 218019   | Chrysene         | 3.90E-02                      | 1.20E-01                       | *                         | *                           | *                  |
| 0027                   | 7439921  | Lead             | 4.20E-02                      | 8.50E-03                       | *                         | *                           | *                  |
| 0028                   | 7439965  | Manganese        | *                             | *                              | 9.00E-02                  | *                           | *                  |
| 0029                   | 7439976  | Mercury          | *                             | *                              | 3.00E-02                  | 1.60E-04                    | 6.00E-01           |
| 0030                   | 7440020  | Nickel           | 9.10E-01                      | *                              | 5.00E-02                  | 5.00E-02                    | 6.00E+00           |
| 0031                   | 7440224  | Silver           | *                             | *                              | *                         | *                           | *                  |
| 0032                   | 7440280  | Thallium         | *                             | *                              | *                         | *                           | *                  |
| 0033                   | 7440360  | Antimony         | *                             | *                              | *                         | *                           | *                  |
| 0034                   | 7440382  | Arsenic          | 1.20E+01                      | 1.50E+00                       | 1.50E-02                  | 3.50E-06                    | 2.00E-01           |
| 0035                   | 7440393  | Barium           | *                             | *                              | *                         | *                           | *                  |
| 0036                   | 7440417  | Beryllium        | 8.40E+00                      | *                              | 7.00E-03                  | 2.00E-03                    | *                  |

PAHS, total, w/o individ. components reported [Treated as B(a)P for HRA]

File: C:\HARP\PROJECTS\2709ValCogen\2709 MEIR.txt 9/7/2011, 2:51:42PM

|      |          |               |          |   |          |          |          |          |
|------|----------|---------------|----------|---|----------|----------|----------|----------|
| 0037 | 7440439  | Cadmium       | 1.50E+01 | * | *        | 2.00E-02 | 5.00E-04 | *        |
| 0038 | 7440473  | Chromium      | *        | * | *        | *        | *        | *        |
| 0039 | 7440508  | Copper        | *        | * | *        | *        | *        | 1.00E+02 |
| 0040 | 7440666  | Zinc          | *        | * | *        | *        | *        | *        |
| 0041 | 7723140  | Phosphorus    | *        | * | *        | *        | *        | *        |
| 0042 | 7782492  | Selenium      | *        | * | 2.00E+01 | *        | *        | *        |
| 0043 | 7783064  | H2S           | *        | * | 1.00E+01 | *        | *        | 4.20E+01 |
| 0044 | 18540299 | Cr(VI)        | 5.10E+02 | * | 2.00E-01 | 2.00E-02 | *        | *        |
| 0045 | 7664417  | NH3           | *        | * | 2.00E+02 | *        | *        | 3.20E+03 |
| 0046 | 106990   | 1,3-Butadiene | 6.00E-01 | * | 7.00E+02 | *        | *        | 2.20E+04 |
| 0047 | 1330207  | Xylenes       | *        | * | *        | *        | *        | *        |
| 0048 | 1151     | PAHs-w/o      | 3.90E+00 | * | 1.20E+01 | *        | *        | *        |
| 0049 | 110543   | Hexane        | *        | * | 7.00E+03 | *        | *        | *        |

EMISSIONS DATA SOURCE: Emission rates loaded from database  
 CHEMICALS ADDED OR DELETED: none

EMISSIONS FOR FACILITY FAC=2644 DEV=104 PRO=1 STK=104 NAME=VALERO REFINERY STACK 104 EMS (lbs/yr)

| CAS     | ABBRV            | MULTIPLIER | BG (ug/m^3) | AVRG (lbs/yr) | MAX (lbs/hr)   |
|---------|------------------|------------|-------------|---------------|----------------|
| 50000   | Formaldehyde     | 1          | 0           | 2342.496207   | 0.267408243    |
| 50328   | B[a]P            | 1          | 0           | 0.000716018   | 0.00000081737  |
| 53703   | D[a,h]anthracen  | 1          | 0           | 0.000716018   | 0.00000081737  |
| 56553   | B[a]anthracene   | 1          | 0           | 0.000716018   | 0.00000081737  |
| 71432   | Benzene          | 1          | 39.49877813 | 0.004508993   | 0.004508993    |
| 75070   | Acetaldehyde     | 1          | 0           | 298.3168356   | 0.034054433    |
| 85018   | Phenanthrene     | 1          | 0           | 0.021480537   | 0.00000245212  |
| 86737   | Fluorene         | 1          | 0           | 0.007160179   | 0.000000817372 |
| 91203   | Naphthalene      | 1          | 0           | 4.050269385   | 0.00046236     |
| 91576   | 2MeNaphthalene   | 1          | 0           | 0.010597065   | 0.00000120971  |
| 100414  | Ethyl Benzene    | 1          | 0           | 100.7667503   | 0.011503054    |
| 108883  | Toluene          | 1          | 0           | 404.8991527   | 0.046221364    |
| 108907  | Chlorobenzn      | 1          | 0           | 5.077567983   | 0.000579631    |
| 108952  | Phenol           | 1          | 0           | 202.2788796   | 0.023091196    |
| 115071  | Propylene        | 1          | 0           | 89.72570225   | 0.01024266     |
| 120127  | Anthracene       | 1          | 0           | 0.000875187   | 0.0000009907   |
| 129000  | Pyrene           | 1          | 0           | 0.004868922   | 0.00000055813  |
| 191242  | B[g,h,i]perylene | 1          | 0           | 0.009308233   | 0.00000106258  |
| 192972  | B[e]pyrene       | 1          | 0           | 0.000498633   | 0.00000056921  |
| 193395  | Inf[1,2,3-cd]pyr | 1          | 0           | 0.000716018   | 0.00000081737  |
| 198550  | Perylene         | 1          | 0           | 0.000716018   | 0.00000081737  |
| 205992  | B[b]fluoranthen  | 1          | 0           | 0.000716018   | 0.00000081737  |
| 206440  | Fluoranthene     | 1          | 0           | 0.004868922   | 0.00000055813  |
| 207089  | B[k]fluoranthen  | 1          | 0           | 0.000716018   | 0.00000081737  |
| 208968  | Acenaphthylene   | 1          | 0           | 0.000716018   | 0.00000081737  |
| 218019  | Chrysene         | 1          | 0           | 0.000716018   | 0.00000081737  |
| 7439921 | Lead             | 1          | 0           | 0.957674351   | 0.000109324    |
| 7439965 | Manganese        | 1          | 0           | 0.668651519   | 0.0000763301   |
| 7439976 | Mercury          | 1          | 0           | 0.440801534   | 0.0000503198   |
| 7440020 | Nickel           | 1          | 0           | 1.309773847   | 0.000149518    |
| 7440224 | Silver           | 1          | 0           | 2.278154777   | 0.000260063    |
| 7440280 | Thallium         | 1          | 0           | 8.168632322   | 0.000932492    |
| 7440360 | Antimony         | 1          | 0           | 0.731275097   | 0.0000834789   |
| 7440382 | Arsenic          | 1          | 0           | 0.086305449   | 0.00000985222  |
| 7440393 | Barium           | 1          | 0           | 8.168632322   | 0.000932492    |
| 7440417 | Beryllium        | 1          | 0           | 0.012885452   | 0.00000147094  |

File: C:\HARP\PROJECTS\2709ValCogen1\2709 MEIR.txt 9/7/2011, 2:51:42PM

| CAS                             | ABBREV                     | MULTIPLIER  | DEV=104       | PRO=2        | STK=105     | NAME=VALERO REFINERY | STACK 105 | EMS (lbs/yr) |
|---------------------------------|----------------------------|-------------|---------------|--------------|-------------|----------------------|-----------|--------------|
| EMISSIONS FOR FACILITY FAC=2644 | SOURCE MULTIPLIER=1        | BG (ug/m^3) | AVRG (lbs/yr) | MAX (lbs/hr) |             |                      |           |              |
| 7440439                         | Cadmium                    | 1           | 0             | 0            | 0.031268092 | 0.00000356942        |           |              |
| 7440473                         | Chromium                   | 1           | 0             | 0            | 0.308831789 | 0.0000352548         |           |              |
| 7440508                         | Copper                     | 1           | 0             | 0            | 0.631161925 | 0.0000720504         |           |              |
| 7440666                         | Zinc                       | 1           | 0             | 0            | 20.87817497 | 0.002383353          |           |              |
| 7723140                         | Phosphorus                 | 1           | 0             | 0            | 0.907485964 | 0.000103594          |           |              |
| 7782492                         | Selenium                   | 1           | 0             | 0            | 0.310525129 | 0.0000354481         |           |              |
| 7783064                         | H2S                        | 1           | 0             | 0            | 307.3597102 | 0.035086725          |           |              |
| 18540299                        | Cr(VI)                     | 1           | 0             | 0            | 0.104511242 | 0.0000119305         |           |              |
| 7664417                         | NH3                        | 1           | 0             | 0            | 24297.69368 | 2.773709324          |           |              |
| 106990                          | 1,3-Butadiene              | 1           | 0             | 0            | 1.292461557 | 0.0000976026         |           |              |
| 1330207                         | Xylenes                    | 1           | 0             | 0            | 192.2499764 | 0.0000333978         |           |              |
| 1151                            | PAHs-w/o                   | 1           | 0             | 0            | 2.702687264 | 0.033057385          |           | *            |
| 110543                          | Hexane                     | 1           | 0             | 0            |             |                      |           | *            |
| 50000                           | Formaldehyde               | 1           | 0             | 0            |             |                      |           | *            |
| 50328                           | B[a]p                      | 1           | 0             | 0            |             |                      |           | *            |
| 53703                           | D[a,h]anthracen            | 1           | 0             | 0            |             |                      |           | *            |
| 56553                           | B[a]anthracene             | 1           | 0             | 0            |             |                      |           | *            |
| 71432                           | Benzene                    | 1           | 0             | 0            |             |                      |           | *            |
| 75070                           | Acetaldehyde               | 1           | 0             | 0            |             |                      |           | *            |
| 85018                           | Phenanthrene               | 1           | 0             | 0            |             |                      |           | *            |
| 86737                           | Fluorene                   | 1           | 0             | 0            |             |                      |           | *            |
| 91203                           | Naphthalene                | 1           | 0             | 0            |             |                      |           | *            |
| 91576                           | 2MeNaphthalene             | 1           | 0             | 0            |             |                      |           | *            |
| 100414                          | Ethyl Benzene              | 1           | 0             | 0            |             |                      |           | *            |
| 108883                          | Toluene                    | 1           | 0             | 0            |             |                      |           | *            |
| 108907                          | Chlorobenzn                | 1           | 0             | 0            |             |                      |           | *            |
| 108952                          | Phenol                     | 1           | 0             | 0            |             |                      |           | *            |
| 115071                          | Propylene                  | 1           | 0             | 0            | 125.34      | 0.014308             |           | *            |
| 129000                          | Anthracene                 | 1           | 0             | 0            |             |                      |           | *            |
| 191242                          | Pyrene                     | 1           | 0             | 0            |             |                      |           | *            |
| 192972                          | B[g,h,i]perylene           | 1           | 0             | 0            |             |                      |           | *            |
| 193395                          | B[e]pyrene                 | 1           | 0             | 0            |             |                      |           | *            |
| 198550                          | In[1,2,3-cd]pyr<br>erylene | 1           | 0             | 0            |             |                      |           | *            |
| 205992                          | B[b]fluoranthen            | 1           | 0             | 0            |             |                      |           | *            |
| 206440                          | Fluoranthene               | 1           | 0             | 0            |             |                      |           | *            |
| 207089                          | B[k]fluoranthen            | 1           | 0             | 0            |             |                      |           | *            |
| 208968                          | Acenaphthylene             | 1           | 0             | 0            |             |                      |           | *            |
| 218019                          | Chrysene                   | 1           | 0             | 0            |             |                      |           | *            |
| 7439921                         | Lead                       | 1           | 0             | 0            |             |                      |           | *            |
| 7439965                         | Manganese                  | 1           | 0             | 0            |             |                      |           | *            |
| 7439976                         | Mercury                    | 1           | 0             | 0            |             |                      |           | *            |
| 7440020                         | Nickel                     | 1           | 0             | 0            |             |                      |           | *            |
| 7440224                         | Silver                     | 1           | 0             | 0            |             |                      |           | *            |
| 7440280                         | Thallium                   | 1           | 0             | 0            |             |                      |           | *            |
| 7440360                         | Antimony                   | 1           | 0             | 0            |             |                      |           | *            |
| 7440382                         | Arsenic                    | 1           | 0             | 0            |             |                      |           | *            |
| 7440393                         | Barium                     | 1           | 0             | 0            |             |                      |           | *            |
| 7440417                         | Beryllium                  | 1           | 0             | 0            |             |                      |           | *            |
| 7440439                         | Cadmium                    | 1           | 0             | 0            |             |                      |           | *            |
| 7440473                         | Chromium                   | 1           | 0             | 0            |             |                      |           | *            |
| 7440508                         | Copper                     | 1           | 0             | 0            |             |                      |           | *            |

| CHEM     | INHAL         | DERM | SOIL | MOTHER | FISH | WATER | VEG | DAIRY | BEEF | CHICK     | PIG | EGG |
|----------|---------------|------|------|--------|------|-------|-----|-------|------|-----------|-----|-----|
| 7440666  | Zinc          |      |      |        | 1    |       | 0   |       | *    | *         |     | *   |
| 7723140  | Phosphorus    |      |      |        | 1    |       | 0   |       | *    | *         |     | *   |
| 7782492  | Selenium      |      |      |        | 1    |       | 0   |       | *    | *         |     | *   |
| 7783064  | H2S           |      |      |        | 1    |       | 0   | 0.45  |      | 0.0000513 |     |     |
| 18540299 | Cr(VI)        |      |      |        | 1    |       | 0   |       | *    | *         |     | *   |
| 7664417  | NH3           |      |      |        | 1    |       | 0   | 1124  |      | 0.128311  |     |     |
| 106990   | 1,3-Butadiene |      |      |        | 1    |       | 0   |       | *    | *         |     | *   |
| 1330207  | Xylenes       |      |      |        | 1    |       | 0   |       | *    | *         |     | *   |
| 1151     | PAHs-w/o      |      |      |        | 1    |       | 0   |       | *    | *         |     | *   |
| 110543   | Hexane        |      |      |        | 1    |       | 0   | 20.44 |      | 0.002334  |     |     |

CANCER RISK REPORT

DOMINANT PATHWAYS, Receptor 669

| CHEM | INHAL | DERM | SOIL | MOTHER | FISH | WATER | VEG | DAIRY | BEEF | CHICK | PIG | EGG |
|------|-------|------|------|--------|------|-------|-----|-------|------|-------|-----|-----|
| 0001 | A     | -    | -    | -      | -    | -     | -   | -     | -    | -     | -   | -   |
| 0002 | -     | YES  | -    | -      | -    | -     | YES | -     | -    | -     | -   | -   |
| 0003 | -     | YES  | -    | -      | -    | -     | YES | -     | -    | -     | -   | -   |
| 0004 | -     | YES  | -    | -      | -    | -     | YES | -     | -    | -     | -   | -   |
| 0005 | A     | -    | -    | -      | -    | -     | -   | -     | -    | -     | -   | -   |
| 0006 | A     | -    | -    | -      | -    | -     | -   | -     | -    | -     | -   | -   |
| 0007 | -     | -    | -    | -      | -    | -     | -   | -     | -    | -     | -   | -   |
| 0008 | -     | -    | -    | -      | -    | -     | -   | -     | -    | -     | -   | -   |
| 0009 | A     | -    | -    | -      | -    | -     | -   | -     | -    | -     | -   | -   |
| 0010 | -     | -    | -    | -      | -    | -     | -   | -     | -    | -     | -   | -   |
| 0011 | A     | -    | -    | -      | -    | -     | -   | -     | -    | -     | -   | -   |
| 0012 | -     | -    | -    | -      | -    | -     | -   | -     | -    | -     | -   | -   |
| 0013 | -     | -    | -    | -      | -    | -     | -   | -     | -    | -     | -   | -   |
| 0014 | -     | -    | -    | -      | -    | -     | -   | -     | -    | -     | -   | -   |
| 0015 | -     | -    | -    | -      | -    | -     | -   | -     | -    | -     | -   | -   |
| 0016 | -     | -    | -    | -      | -    | -     | -   | -     | -    | -     | -   | -   |
| 0017 | -     | -    | -    | -      | -    | -     | -   | -     | -    | -     | -   | -   |
| 0018 | -     | -    | -    | -      | -    | -     | -   | -     | -    | -     | -   | -   |
| 0019 | -     | -    | -    | -      | -    | -     | -   | -     | -    | -     | -   | -   |
| 0020 | -     | YES  | -    | -      | -    | -     | YES | -     | -    | -     | -   | -   |
| 0021 | -     | -    | -    | -      | -    | -     | -   | -     | -    | -     | -   | -   |
| 0022 | -     | YES  | -    | -      | -    | -     | YES | -     | -    | -     | -   | -   |
| 0023 | -     | -    | -    | -      | -    | -     | -   | -     | -    | -     | -   | -   |
| 0024 | -     | YES  | -    | -      | -    | -     | YES | -     | -    | -     | -   | -   |
| 0025 | -     | -    | -    | -      | -    | -     | -   | -     | -    | -     | -   | -   |
| 0026 | -     | YES  | -    | -      | -    | -     | YES | -     | -    | -     | -   | -   |
| 0027 | -     | -    | YES  | -      | -    | -     | YES | -     | -    | -     | -   | -   |
| 0028 | -     | -    | -    | -      | -    | -     | -   | -     | -    | -     | -   | -   |
| 0029 | -     | -    | -    | -      | -    | -     | -   | -     | -    | -     | -   | -   |
| 0030 | A     | -    | -    | -      | -    | -     | -   | -     | -    | -     | -   | -   |
| 0031 | -     | -    | -    | -      | -    | -     | -   | -     | -    | -     | -   | -   |
| 0032 | -     | -    | -    | -      | -    | -     | -   | -     | -    | -     | -   | -   |
| 0033 | -     | -    | -    | -      | -    | -     | -   | -     | -    | -     | -   | -   |
| 0034 | A     | YES  | -    | -      | -    | -     | -   | -     | -    | -     | -   | -   |
| 0035 | -     | -    | -    | -      | -    | -     | -   | -     | -    | -     | -   | -   |
| 0036 | A     | -    | -    | -      | -    | -     | -   | -     | -    | -     | -   | -   |
| 0037 | A     | -    | -    | -      | -    | -     | -   | -     | -    | -     | -   | -   |
| 0038 | -     | -    | -    | -      | -    | -     | -   | -     | -    | -     | -   | -   |
| 0039 | -     | -    | -    | -      | -    | -     | -   | -     | -    | -     | -   | -   |
| 0040 | -     | -    | -    | -      | -    | -     | -   | -     | -    | -     | -   | -   |
| 0041 | -     | -    | -    | -      | -    | -     | -   | -     | -    | -     | -   | -   |





File: C:\HARP\PROJECTS\2709Val\Cogen1\2709 MEIW.txt 9/9/2011, 5:19:03PM

This file: C:\HARP\PROJECTS\2709Val\Cogen1\2709 MEIW.txt

Created by HARP Version 1.4d Build 23.09.07

Uses ISC Version 99155

Uses BPIP (Dated: 04112)

Creation date: 9/7/2011 2:56:26 PM

EXCEPTION REPORT

(there have been no changes or exceptions)

INPUT FILES:

Source-Receptor file: C:\HARP\PROJECTS\2709Val\Cogen1\2709CGN1.SRC

Averaging period adjustment factors file: not applicable

Emission rates file: database

Site parameters file: C:\HARP\PROJECTS\worker pathway.sit

Coordinate system: UTM NAD27

Screening mode is OFF

Exposure duration: Standard work schedule (49 wks/yr, 5 days/wk, 8 hrs/day, 40 yrs)

Analysis method: Point estimate

Health effect: Cancer Risk

Receptor(s): 648

Sources(s): All

Chemicals(s): All

SITE PARAMETERS

DEPOSITION

Deposition rate (m/s) 0.02

DRINKING WATER

\*\*\* Pathway disabled \*\*\*

FISH

\*\*\* Pathway disabled \*\*\*

PASTURE

\*\*\* Pathway disabled \*\*\*

HOME GROWN PRODUCE

\*\*\* Pathway disabled \*\*\*

PIGS, CHICKENS AND EGGS

\*\*\* Pathway disabled \*\*\*

DERMAL ABSORPTION

\*\*\* Pathway enabled \*\*\*

SOIL INGESTION

\*\*\* Pathway enabled \*\*\*

MOTHER'S MILK

\*\*\* Pathway disabled \*\*\*

CHEMICAL CROSS-REFERENCE TABLE AND BACKGROUND CONCENTRATIONS

| CHEM | CAS     | ABBREVIATION     | POLLUTANT NAME         | BACKGROUND (ug/m <sup>3</sup> ) |
|------|---------|------------------|------------------------|---------------------------------|
| 0001 | 50000   | Formaldehyde     | Formaldehyde           | 0.000E+00                       |
| 0002 | 50328   | B[a]p            | Benzo[a]pyrene         | 0.000E+00                       |
| 0003 | 53703   | D[a,h]anthracen  | Dibenz[a,h]anthracene  | 0.000E+00                       |
| 0004 | 56553   | B[a]anthracene   | Benzo[a]anthracene     | 0.000E+00                       |
| 0005 | 71432   | Benzene          | Benzene                | 0.000E+00                       |
| 0006 | 75070   | Acetaldehyde     | Acetaldehyde           | 0.000E+00                       |
| 0007 | 85018   | Phenanthrene     | Phenanthrene           | 0.000E+00                       |
| 0008 | 86737   | Fluorene         | Fluorene               | 0.000E+00                       |
| 0009 | 91203   | Naphthalene      | Naphthalene            | 0.000E+00                       |
| 0010 | 91576   | 2MeNaphthalene   | 2-Methyl naphthalene   | 0.000E+00                       |
| 0011 | 100414  | Ethyl Benzene    | Ethyl benzene          | 0.000E+00                       |
| 0012 | 108883  | Toluene          | Toluene                | 0.000E+00                       |
| 0013 | 108907  | Chlorobenzn      | Chlorobenzene          | 0.000E+00                       |
| 0014 | 108952  | Phenol           | Phenol                 | 0.000E+00                       |
| 0015 | 115071  | Propylene        | Propylene              | 0.000E+00                       |
| 0016 | 120127  | Anthracene       | Anthracene             | 0.000E+00                       |
| 0017 | 129000  | Pyrene           | Pyrene                 | 0.000E+00                       |
| 0018 | 191242  | B[g,h,i]perylene | Benzo[g,h,i]perylene   | 0.000E+00                       |
| 0019 | 192972  | B[e]pyrene       | Benzo[e]pyrene         | 0.000E+00                       |
| 0020 | 193395  | In[1,2,3-cd]pyr  | Indeno[1,2,3-cd]pyrene | 0.000E+00                       |
| 0021 | 198550  | Perylene         | Perylene               | 0.000E+00                       |
| 0022 | 205992  | B[b]fluoranthen  | Benzo[b]fluoranthene   | 0.000E+00                       |
| 0023 | 206440  | Fluoranthene     | Fluoranthene           | 0.000E+00                       |
| 0024 | 207089  | B[k]fluoranthen  | Benzo[k]fluoranthene   | 0.000E+00                       |
| 0025 | 208968  | Acenaphthylene   | Acenaphthylene         | 0.000E+00                       |
| 0026 | 218019  | Chrysene         | Chrysene               | 0.000E+00                       |
| 0027 | 7439921 | Lead             | Lead                   | 0.000E+00                       |
| 0028 | 7439965 | Manganese        | Manganese              | 0.000E+00                       |
| 0029 | 7439976 | Mercury          | Mercury                | 0.000E+00                       |
| 0030 | 7440020 | Nickel           | Nickel                 | 0.000E+00                       |
| 0031 | 7440224 | Silver           | Silver                 | 0.000E+00                       |
| 0032 | 7440280 | Thallium         | Thallium               | 0.000E+00                       |
| 0033 | 7440360 | Antimony         | Antimony               | 0.000E+00                       |
| 0034 | 7440382 | Arsenic          | Arsenic                | 0.000E+00                       |
| 0035 | 7440393 | Barium           | Barium                 | 0.000E+00                       |
| 0036 | 7440417 | Beryllium        | Beryllium              | 0.000E+00                       |
| 0037 | 7440439 | Cadmium          | Cadmium                | 0.000E+00                       |
| 0038 | 7440473 | Chromium         | Chromium               | 0.000E+00                       |
| 0039 | 7440508 | Copper           | Copper                 | 0.000E+00                       |
| 0040 | 7440666 | Zinc             | Zinc                   | 0.000E+00                       |
| 0041 | 7723140 | Phosphorus       | Phosphorus             | 0.000E+00                       |
| 0042 | 7782492 | Selenium         | Selenium               | 0.000E+00                       |



| CHEM                   | CAS      | ABBREVIATION     | CancerPF(Inh)<br>(mg/kg-d)^-1 | CancerPF(Oral)<br>(mg/kg-d)^-1 | ChronicREL(Inh)<br>ug/m^3 | ChronicREL(Oral)<br>mg/kg-d | AcuteREL<br>ug/m^3 |
|------------------------|----------|------------------|-------------------------------|--------------------------------|---------------------------|-----------------------------|--------------------|
| 0043                   | 7783064  | H2S              |                               |                                |                           |                             | 0.000E+00          |
| 0044                   | 18540299 | Hydrogen sulfide |                               |                                |                           |                             | 0.000E+00          |
| 0045                   | 7664417  | Cr(VI)           |                               |                                |                           |                             | 0.000E+00          |
| 0046                   | 106990   | NH3              |                               |                                |                           |                             | 0.000E+00          |
| 0047                   | 1330207  | 1,3-Butadiene    |                               |                                |                           |                             | 0.000E+00          |
| 0048                   | 1151     | Xylenes (mixed)  |                               |                                |                           |                             | 0.000E+00          |
| 0049                   | 110543   | PAHS-w/o Hexane  |                               |                                |                           |                             | 0.000E+00          |
| CHEMICAL HEALTH VALUES |          |                  |                               |                                |                           |                             |                    |
| 0001                   | 50000    | Formaldehyde     | 2.10E-02                      | *                              | 9.00E+00                  | *                           | 5.50E+01           |
| 0002                   | 50328    | B[a]p            | 3.90E+00                      | 1.20E+01                       | *                         | *                           | *                  |
| 0003                   | 53703    | D[a,h]anthracen  | 4.10E+00                      | 4.10E+00                       | *                         | *                           | *                  |
| 0004                   | 56553    | B[a]anthracene   | 3.90E-01                      | 1.20E+00                       | *                         | *                           | *                  |
| 0005                   | 71432    | Benzene          | 1.00E-01                      | *                              | 6.00E+01                  | *                           | 1.30E+03           |
| 0006                   | 75070    | Acetaldehyde     | 1.00E-02                      | *                              | 1.40E+02                  | *                           | 4.70E+02           |
| 0007                   | 85018    | Phenanthrene     | *                             | *                              | *                         | *                           | *                  |
| 0008                   | 86737    | Fluorene         | *                             | *                              | *                         | *                           | *                  |
| 0009                   | 91203    | Naphthalene      | 1.20E-01                      | *                              | 9.00E+00                  | *                           | *                  |
| 0010                   | 91576    | 2MeNaphthalene   | *                             | *                              | *                         | *                           | *                  |
| 0011                   | 100414   | Ethyl Benzene    | 8.70E-03                      | *                              | 2.00E+03                  | *                           | 3.70E+04           |
| 0012                   | 108883   | Toluene          | *                             | *                              | 3.00E+02                  | *                           | *                  |
| 0013                   | 108907   | Chlorobenzn      | *                             | *                              | 1.00E+03                  | *                           | *                  |
| 0014                   | 108952   | Phenol           | *                             | *                              | 2.00E+02                  | *                           | 5.80E+03           |
| 0015                   | 115071   | Propylene        | *                             | *                              | *                         | *                           | *                  |
| 0016                   | 120127   | Anthracene       | *                             | *                              | 3.00E+03                  | *                           | *                  |
| 0017                   | 129000   | Pyrene           | *                             | *                              | *                         | *                           | *                  |
| 0018                   | 191242   | B[g,h,i]perylene | *                             | *                              | *                         | *                           | *                  |
| 0019                   | 192972   | B[e]pyrene       | *                             | *                              | *                         | *                           | *                  |
| 0020                   | 193395   | In[1,2,3-cd]pyr  | 3.90E-01                      | 1.20E+00                       | *                         | *                           | *                  |
| 0021                   | 198550   | Perylene         | *                             | *                              | *                         | *                           | *                  |
| 0022                   | 205992   | B[b]fluoranthen  | 3.90E-01                      | 1.20E+00                       | *                         | *                           | *                  |
| 0023                   | 206440   | Fluoranthene     | *                             | *                              | *                         | *                           | *                  |
| 0024                   | 207089   | B[k]fluoranthen  | 3.90E-01                      | 1.20E+00                       | *                         | *                           | *                  |
| 0025                   | 208968   | Acenaphthylene   | *                             | *                              | *                         | *                           | *                  |
| 0026                   | 218019   | Chrysene         | 3.90E-02                      | 1.20E-01                       | *                         | *                           | *                  |
| 0027                   | 7439921  | Lead             | 4.20E-02                      | 8.50E-03                       | *                         | *                           | *                  |
| 0028                   | 7439965  | Manganese        | *                             | *                              | 9.00E-02                  | *                           | *                  |
| 0029                   | 7439976  | Mercury          | *                             | *                              | 3.00E-02                  | 1.60E-04                    | 6.00E-01           |
| 0030                   | 7440020  | Nickel           | 9.10E-01                      | *                              | 5.00E-02                  | 5.00E-02                    | 6.00E+00           |
| 0031                   | 7440224  | Silver           | *                             | *                              | *                         | *                           | *                  |
| 0032                   | 7440280  | Thallium         | *                             | *                              | *                         | *                           | *                  |
| 0033                   | 7440360  | Antimony         | *                             | *                              | *                         | *                           | *                  |
| 0034                   | 7440382  | Arsenic          | 1.20E+01                      | 1.50E+00                       | 1.50E-02                  | 3.50E-06                    | 2.00E-01           |
| 0035                   | 7440393  | Barium           | *                             | *                              | *                         | *                           | *                  |
| 0036                   | 7440417  | Beryllium        | 8.40E+00                      | *                              | 7.00E-03                  | 2.00E-03                    | *                  |
| 0037                   | 7440439  | Cadmium          | 1.50E+01                      | *                              | 2.00E-02                  | 5.00E-04                    | *                  |
| 0038                   | 7440473  | Chromium         | *                             | *                              | *                         | *                           | *                  |
| 0039                   | 7440508  | Copper           | *                             | *                              | *                         | *                           | 1.00E+02           |
| 0040                   | 7440666  | Zinc             | *                             | *                              | *                         | *                           | *                  |
| 0041                   | 7723140  | Phosphorus       | *                             | *                              | *                         | *                           | *                  |
| 0042                   | 7782492  | Selenium         | *                             | *                              | 2.00E+01                  | *                           | *                  |
| 0043                   | 7783064  | H2S              | *                             | *                              | 1.00E+01                  | *                           | 4.20E+01           |
| 0044                   | 18540299 | Cr(VI)           | 5.10E+02                      | *                              | 2.00E-01                  | 2.00E-02                    | *                  |

File: C:\HARP\PROJECTS\2709ValCogen\12709 MEIW.txt 9/9/2011, 5:19:03PM

|      |         |               |   |          |   |          |
|------|---------|---------------|---|----------|---|----------|
| 0045 | 7664417 | NH3           | * | 2.00E+02 | * | 3.20E+03 |
| 0046 | 106990  | 1,3-Butadiene | * | 2.00E+01 | * | *        |
| 0047 | 1330207 | Xylenes       | * | 7.00E+02 | * | 2.20E+04 |
| 0048 | 1151    | PAHS-w/o      | * | *        | * | *        |
| 0049 | 110543  | Hexane        | * | 7.00E+03 | * | *        |

EMISSIONS DATA SOURCE: Emission rates loaded from database  
 CHEMICALS ADDED OR DELETED: none

| SOURCE   | MULTIPLIER=1     | FAC=2644   | DEV=104     | PRO=1         | STK=104        | NAME=VALERO REFINERY | STACK 104 | EMS (lbs/yr) |
|----------|------------------|------------|-------------|---------------|----------------|----------------------|-----------|--------------|
| CAS      | ABBREV           | MULTIPLIER | BG (ug/m^3) | AVRG (lbs/yr) | MAX (lbs/hr)   |                      |           |              |
| 50000    | Formaldehyde     | 1          | 0           | 2342.496207   | 0.267408243    |                      |           |              |
| 50328    | B[a]P            | 1          | 0           | 0.000716018   | 0.000000081737 |                      |           |              |
| 53703    | D[a,h]anthracen  | 1          | 0           | 0.000716018   | 0.000000081737 |                      |           |              |
| 56553    | B[a]anthracene   | 1          | 0           | 0.000716018   | 0.000000081737 |                      |           |              |
| 71432    | Benzene          | 1          | 0           | 39.49877813   | 0.004508993    |                      |           |              |
| 75070    | Acetaldehyde     | 1          | 0           | 298.3168356   | 0.034054433    |                      |           |              |
| 85018    | Phenanthrene     | 1          | 0           | 0.021480537   | 0.00000245212  |                      |           |              |
| 86737    | Fluorene         | 1          | 0           | 0.007160179   | 0.000000817372 |                      |           |              |
| 91203    | Naphthalene      | 1          | 0           | 4.050269385   | 0.00046236     |                      |           |              |
| 91576    | 2MeNaphthalene   | 1          | 0           | 0.010597065   | 0.00000120971  |                      |           |              |
| 100414   | Ethyl Benzene    | 1          | 0           | 100.7667503   | 0.011503054    |                      |           |              |
| 10883    | Toluene          | 1          | 0           | 404.8991527   | 0.046221364    |                      |           |              |
| 108907   | Chlorobenzn      | 1          | 0           | 5.077567983   | 0.000579631    |                      |           |              |
| 108952   | Phenol           | 1          | 0           | 202.2788796   | 0.023091196    |                      |           |              |
| 115071   | Propylene        | 1          | 0           | 89.72570225   | 0.01024266     |                      |           |              |
| 120127   | Anthracene       | 1          | 0           | 0.000875187   | 0.00000099907  |                      |           |              |
| 129000   | Pyrene           | 1          | 0           | 0.004868922   | 0.00000555813  |                      |           |              |
| 191242   | B[g,h,i]perylene | 1          | 0           | 0.009308233   | 0.00000106258  |                      |           |              |
| 192972   | B[e]pyrene       | 1          | 0           | 0.000498633   | 0.00000056921  |                      |           |              |
| 193395   | In[1,2,3-cd]pyr  | 1          | 0           | 0.000716018   | 0.00000081737  |                      |           |              |
| 198550   | Perylene         | 1          | 0           | 0.000716018   | 0.00000081737  |                      |           |              |
| 205992   | B[b]fluoranthen  | 1          | 0           | 0.000716018   | 0.00000081737  |                      |           |              |
| 206440   | Fluoranthene     | 1          | 0           | 0.004868922   | 0.00000555813  |                      |           |              |
| 207089   | B[k]fluoranthen  | 1          | 0           | 0.000716018   | 0.00000081737  |                      |           |              |
| 208968   | Acenaphthylene   | 1          | 0           | 0.000716018   | 0.00000081737  |                      |           |              |
| 218019   | Chrysene         | 1          | 0           | 0.000716018   | 0.00000081737  |                      |           |              |
| 7439921  | Lead             | 1          | 0           | 0.957674351   | 0.000109324    |                      |           |              |
| 7439965  | Manganese        | 1          | 0           | 0.668651519   | 0.0000763301   |                      |           |              |
| 7439976  | Mercury          | 1          | 0           | 0.440801534   | 0.0000503198   |                      |           |              |
| 7440020  | Nickel           | 1          | 0           | 1.309773847   | 0.000149518    |                      |           |              |
| 7440224  | Silver           | 1          | 0           | 2.278154777   | 0.000260063    |                      |           |              |
| 7440280  | Thallium         | 1          | 0           | 8.168632322   | 0.000932492    |                      |           |              |
| 7440360  | Antimony         | 1          | 0           | 0.731275097   | 0.0000834789   |                      |           |              |
| 7440382  | Arsenic          | 1          | 0           | 0.086305449   | 0.0000985222   |                      |           |              |
| 7440393  | Barium           | 1          | 0           | 8.168632322   | 0.000932492    |                      |           |              |
| 7440417  | Beryllium        | 1          | 0           | 0.012885452   | 0.0000147094   |                      |           |              |
| 7440439  | Cadmium          | 1          | 0           | 0.031268092   | 0.00000356942  |                      |           |              |
| 7440473  | Chromium         | 1          | 0           | 0.308831789   | 0.0000352548   |                      |           |              |
| 7440508  | Copper           | 1          | 0           | 0.631161925   | 0.0000720504   |                      |           |              |
| 7440666  | Zinc             | 1          | 0           | 20.87817497   | 0.002383353    |                      |           |              |
| 7723140  | Phosphorus       | 1          | 0           | 0.907485964   | 0.000103594    |                      |           |              |
| 7782492  | Selenium         | 1          | 0           | 0.310525129   | 0.0000354481   |                      |           |              |
| 7783064  | H2S              | 1          | 0           | 307.3597102   | 0.035086725    |                      |           |              |
| 18540299 | Cr(VI)           | 1          | 0           | 0.104511242   | 0.0000119305   |                      |           |              |

File: C:\HARP\PROJECTS\2709\ValCogen1\2709 MEIW.txt 9/9/2011, 5:19:03PM

| CAS   | ABBREV           | MULTIPLIER | PRO=2 | STK=105 | NAME=VALERO REFINERY STACK 105 | AVRG (lbs/yr) | MAX (lbs/hr) | EMS (lbs/yr) |
|---|------------------|------------|-------|---------|--------------------------------|---------------|--------------|--------------|
| 7664417   | NH3              | 1          | 1     | 0       | 24297.69368                    | 2.773709324   |              |              |
| 106990  | 1,3-Butadiene    | 1          | 1     | 0       | 1.292461557                    | 0.0000976026  |              |              |
| 1330207   | Xylenes          | 1          | 1     | 0       | 192.2499764                    | 0.0000333978  |              |              |
| 1151  | PAHS-w/o         | 1          | 1     | 0       | 2.702687264                    | 0.033057385   |              | *            |
| 110543  | Hexane           | 1          | 1     | 0       |                                |               |              | *            |
| EMISSIONS FOR FACILITY FAC=2644 DEV=104 PRO=2 STK=105 NAME=VALERO REFINERY STACK 105 EMS (lbs/yr) |                  |            |       |         |                                |               |              |              |
| SOURCE MULTIPLIER=1   |                  |            |       |         |                                |               |              |              |
| 50000   | Formaldehyde     | 1          | 1     | 0       |                                |               |              | *            |
| 50328   | B[a]P            | 1          | 1     | 0       |                                |               |              | *            |
| 53703   | D[a,h]anthracen  | 1          | 1     | 0       |                                |               |              | *            |
| 56553   | B[a]anthracene   | 1          | 1     | 0       |                                |               |              | *            |
| 71432   | Benzene          | 1          | 1     | 0       |                                |               |              | *            |
| 75070   | Acetaldehyde     | 1          | 1     | 0       |                                |               |              | *            |
| 85018   | Phenanthrene     | 1          | 1     | 0       |                                |               |              | *            |
| 86737   | Fluorene         | 1          | 1     | 0       |                                |               |              | *            |
| 91203   | Naphthalene      | 1          | 1     | 0       |                                |               |              | *            |
| 91576   | 2MeNaphthalene   | 1          | 1     | 0       |                                |               |              | *            |
| 100414  | Ethyl Benzene    | 1          | 1     | 0       |                                |               |              | *            |
| 10883   | Toluene          | 1          | 1     | 0       |                                |               |              | *            |
| 108907  | Chlorobenzn      | 1          | 1     | 0       |                                |               |              | *            |
| 108952  | Phenol           | 1          | 1     | 0       |                                |               |              | *            |
| 115071  | Propylene        | 1          | 1     | 0       | 125.34                         | 0.014308      |              | *            |
| 120127  | Anthracene       | 1          | 1     | 0       |                                |               |              | *            |
| 129000  | Pyrene           | 1          | 1     | 0       |                                |               |              | *            |
| 191242  | B[g,h,i]perylene | 1          | 1     | 0       |                                |               |              | *            |
| 192972  | B[e]pyrene       | 1          | 1     | 0       |                                |               |              | *            |
| 193395  | Inf.1,2,3-cd]pyr | 1          | 1     | 0       |                                |               |              | *            |
| 198550  | Perylene         | 1          | 1     | 0       |                                |               |              | *            |
| 205992  | B[b]fluoranthen  | 1          | 1     | 0       |                                |               |              | *            |
| 206440  | Fluoranthene     | 1          | 1     | 0       |                                |               |              | *            |
| 207089  | B[k]fluoranthen  | 1          | 1     | 0       |                                |               |              | *            |
| 208968  | Acenaphthylene   | 1          | 1     | 0       |                                |               |              | *            |
| 218019  | Chrysene         | 1          | 1     | 0       |                                |               |              | *            |
| 7439921   | Lead             | 1          | 1     | 0       |                                |               |              | *            |
| 7439965   | Manganese        | 1          | 1     | 0       |                                |               |              | *            |
| 7439976   | Mercury          | 1          | 1     | 0       |                                |               |              | *            |
| 7440020   | Nickel           | 1          | 1     | 0       |                                |               |              | *            |
| 7440224   | Silver           | 1          | 1     | 0       |                                |               |              | *            |
| 7440280   | Thallium         | 1          | 1     | 0       |                                |               |              | *            |
| 7440360   | Antimony         | 1          | 1     | 0       |                                |               |              | *            |
| 7440382   | Arsenic          | 1          | 1     | 0       |                                |               |              | *            |
| 7440393   | Barium           | 1          | 1     | 0       |                                |               |              | *            |
| 7440417   | Beryllium        | 1          | 1     | 0       |                                |               |              | *            |
| 7440439   | Cadmium          | 1          | 1     | 0       |                                |               |              | *            |
| 7440473   | Chromium         | 1          | 1     | 0       |                                |               |              | *            |
| 7440508   | Copper           | 1          | 1     | 0       |                                |               |              | *            |
| 7440666   | Zinc             | 1          | 1     | 0       |                                |               |              | *            |
| 7723140   | Phosphorus       | 1          | 1     | 0       |                                |               |              | *            |
| 7782492   | Selenium         | 1          | 1     | 0       |                                |               |              | *            |
| 7783064   | H2S              | 1          | 1     | 0       |                                |               |              | *            |
| 18540299  | Cr(VI)           | 1          | 1     | 0       | 0.45                           | 0.0000513     |              | *            |
| 7664417   | NH3              | 1          | 1     | 0       | 1124                           | 0.128311      |              | *            |
| 106990  | 1,3-Butadiene    | 1          | 1     | 0       |                                |               |              | *            |
| 1330207   | Xylenes          | 1          | 1     | 0       |                                |               |              | *            |





File: C:\HARP\PROJECTS\2709Val\Cogen1\2709 MCHI.txt 9/7/2011, 2:51:16PM

This file: C:\HARP\PROJECTS\2709Val\Cogen1\2709 MCHI.txt

Created by HARP Version 1.4d Build 23.09.07

Uses ISC Version 99155

Uses BPIP (Dated: 04112)

Creation date: 9/9/2011 5:04:11 PM

#### EXCEPTION REPORT

(there have been no changes or exceptions)

#### INPUT FILES:

Source-Receptor file: C:\HARP\PROJECTS\2709Val\Cogen1\2709CGN1.SRC

Averaging period adjustment factors file: not applicable

Emission rates file: database

Site parameters file: C:\HARP\PROJECTS\resident pathway.sit

Coordinate system: UTM NAD27

Screening mode is OFF

Exposure duration: resident

Analysis method: Average Point Estimate

Health effect: Chronic HI

Receptor(s): 647

Sources(s): All

Chemicals(s): All

#### SITE PARAMETERS

#### DEPOSITION

Deposition rate (m/s) 0.02

#### DRINKING WATER

\*\*\* Pathway disabled \*\*\*

#### FISH

\*\*\* Pathway disabled \*\*\*

#### PASTURE

\*\*\* Pathway disabled \*\*\*

#### HOME GROWN PRODUCE

##### HUMAN INGESTION

Fraction of ingested leafy vegetable

from home grown source 0.052

Fraction of ingested exposed vegetable

from home grown source 0.052

Fraction of ingested protected vegetable

from home grown source 0.052

Fraction of ingested root vegetable

from home grown source 0.052

PIGS, CHICKENS AND EGGS

\*\*\* Pathway disabled \*\*\*

DERMAL ABSORPTION

\*\*\* Pathway enabled \*\*\*

SOIL INGESTION

\*\*\* Pathway enabled \*\*\*

MOTHER'S MILK

\*\*\* Pathway enabled \*\*\*

CHEMICAL CROSS-REFERENCE TABLE AND BACKGROUND CONCENTRATIONS

| CHEM CAS | ABBREVIATION | POLLUTANT NAME   | BACKGROUND (ug/m <sup>3</sup> ) |
|----------|--------------|------------------|---------------------------------|
| 0001     | 50000        | Formaldehyde     | 0.000E+00                       |
| 0002     | 50328        | Benzaldehyde     | 0.000E+00                       |
| 0003     | 53703        | D[a,h]anthracen  | 0.000E+00                       |
| 0004     | 56553        | B[a]anthracene   | 0.000E+00                       |
| 0005     | 71432        | Benzene          | 0.000E+00                       |
| 0006     | 75070        | Acetaldehyde     | 0.000E+00                       |
| 0007     | 85018        | Phenanthrene     | 0.000E+00                       |
| 0008     | 86737        | Fluorene         | 0.000E+00                       |
| 0009     | 91203        | Naphthalene      | 0.000E+00                       |
| 0010     | 91576        | 2Methnaphthalene | 0.000E+00                       |
| 0011     | 100414       | Ethyl Benzene    | 0.000E+00                       |
| 0012     | 108883       | Toluene          | 0.000E+00                       |
| 0013     | 108907       | Chlorobenzn      | 0.000E+00                       |
| 0014     | 108952       | Phenol           | 0.000E+00                       |
| 0015     | 115071       | Propylene        | 0.000E+00                       |
| 0016     | 120127       | Anthracene       | 0.000E+00                       |
| 0017     | 129000       | Pyrene           | 0.000E+00                       |
| 0018     | 191242       | B[g,h,i]perylene | 0.000E+00                       |
| 0019     | 192972       | Be[pyrene]       | 0.000E+00                       |
| 0020     | 193395       | In[1,2,3-cd]pyr  | 0.000E+00                       |
| 0021     | 198550       | Perylene         | 0.000E+00                       |
| 0022     | 205992       | B[b]fluoranthen  | 0.000E+00                       |
| 0023     | 206440       | Fluoranthene     | 0.000E+00                       |
| 0024     | 207089       | B[k]fluoranthen  | 0.000E+00                       |
| 0025     | 208968       | Acenaphthylene   | 0.000E+00                       |
| 0026     | 218019       | Chrysene         | 0.000E+00                       |
| 0027     | 7439921      | Lead             | 0.000E+00                       |
| 0028     | 7439965      | Manganese        | 0.000E+00                       |
| 0029     | 7439976      | Mercury          | 0.000E+00                       |
| 0030     | 7440020      | Nickel           | 0.000E+00                       |
| 0031     | 7440224      | Silver           | 0.000E+00                       |
| 0032     | 7440280      | Thallium         | 0.000E+00                       |
| 0033     | 7440360      | Antimony         | 0.000E+00                       |
| 0034     | 7440382      | Arsenic          | 0.000E+00                       |

File: C:\HARP\PROJECTS\2709ValCogen1\2709 MCH1.txt 9/7/2011, 2:51:16PM

| CHEM                   | CAS      | ABBREVIATION     | CancerPF(Inh)<br>(mg/kg-d)^-1 | CancerPF(Oral)<br>(mg/kg-d)^-1 | ChronicREL(Inh)<br>ug/m^3 | ChronicREL(Oral)<br>mg/kg-d | AcuteREL<br>ug/m^3 |
|------------------------|----------|------------------|-------------------------------|--------------------------------|---------------------------|-----------------------------|--------------------|
| 0035                   | 7440393  | Barium           |                               |                                |                           |                             | 0.000E+00          |
| 0036                   | 7440417  | Beryllium        |                               |                                |                           |                             | 0.000E+00          |
| 0037                   | 7440439  | Cadmium          |                               |                                |                           |                             | 0.000E+00          |
| 0038                   | 7440473  | Chromium         |                               |                                |                           |                             | 0.000E+00          |
| 0039                   | 7440508  | Copper           |                               |                                |                           |                             | 0.000E+00          |
| 0040                   | 7440666  | Zinc             |                               |                                |                           |                             | 0.000E+00          |
| 0041                   | 7723140  | Phosphorus       |                               |                                |                           |                             | 0.000E+00          |
| 0042                   | 7782492  | Selenium         |                               |                                |                           |                             | 0.000E+00          |
| 0043                   | 7783064  | H2S              |                               |                                |                           |                             | 0.000E+00          |
| 0044                   | 18540299 | Cr(VI)           |                               |                                |                           |                             | 0.000E+00          |
| 0045                   | 7664417  | NH3              |                               |                                |                           |                             | 0.000E+00          |
| 0046                   | 106990   | 1,3-Butadiene    |                               |                                |                           |                             | 0.000E+00          |
| 0047                   | 1330207  | Xylenes          |                               |                                |                           |                             | 0.000E+00          |
| 0048                   | 1151     | PAHS-w/o         |                               |                                |                           |                             | 0.000E+00          |
| 0049                   | 110543   | Hexane           |                               |                                |                           |                             | 0.000E+00          |
| CHEMICAL HEALTH VALUES |          |                  |                               |                                |                           |                             |                    |
| 0001                   | 50000    | Formaldehyde     | 2.10E-02                      | *                              | 9.00E+00                  | *                           | 5.50E+01           |
| 0002                   | 50328    | B[a]P            | 3.90E+00                      | 1.20E+01                       | *                         | *                           | *                  |
| 0003                   | 53703    | D[a,h]anthracen  | 4.10E+00                      | 4.10E+00                       | *                         | *                           | *                  |
| 0004                   | 56553    | B[a]anthracene   | 3.90E-01                      | 1.20E+00                       | *                         | *                           | *                  |
| 0005                   | 71432    | Benzene          | 1.00E-01                      | *                              | 6.00E+01                  | *                           | 1.30E+03           |
| 0006                   | 75070    | Acetaldehyde     | 1.00E-02                      | *                              | 1.40E+02                  | *                           | 4.70E+02           |
| 0007                   | 85018    | Phenanthrene     | *                             | *                              | *                         | *                           | *                  |
| 0008                   | 86737    | Fluorene         | *                             | *                              | *                         | *                           | *                  |
| 0009                   | 91203    | Naphthalene      | 1.20E-01                      | *                              | 9.00E+00                  | *                           | *                  |
| 0010                   | 91576    | 2MeNaphthalene   | *                             | *                              | *                         | *                           | *                  |
| 0011                   | 100414   | Ethyl Benzene    | 8.70E-03                      | *                              | 2.00E+03                  | *                           | 3.70E+04           |
| 0012                   | 108883   | Toluene          | *                             | *                              | 3.00E+02                  | *                           | *                  |
| 0013                   | 108907   | Chlorobenzn      | *                             | *                              | 1.00E+03                  | *                           | *                  |
| 0014                   | 108952   | Phenol           | *                             | *                              | 2.00E+02                  | *                           | 5.80E+03           |
| 0015                   | 115071   | Propylene        | *                             | *                              | *                         | *                           | *                  |
| 0016                   | 120127   | Anthracene       | *                             | *                              | 3.00E+03                  | *                           | *                  |
| 0017                   | 129000   | Pyrene           | *                             | *                              | *                         | *                           | *                  |
| 0018                   | 191242   | B[g,h,i]perylene | *                             | *                              | *                         | *                           | *                  |
| 0019                   | 192972   | B[e]pyrene       | *                             | *                              | *                         | *                           | *                  |
| 0020                   | 193395   | In[1,2,3-cd]pyr  | 3.90E-01                      | 1.20E+00                       | *                         | *                           | *                  |
| 0021                   | 198550   | Perylene         | *                             | *                              | *                         | *                           | *                  |
| 0022                   | 205992   | B[b]fluoranthen  | 3.90E-01                      | 1.20E+00                       | *                         | *                           | *                  |
| 0023                   | 206440   | Fluoranthene     | *                             | *                              | *                         | *                           | *                  |
| 0024                   | 207089   | B[k]fluoranthen  | 3.90E-01                      | 1.20E+00                       | *                         | *                           | *                  |
| 0025                   | 208968   | Acenaphthylene   | *                             | *                              | *                         | *                           | *                  |
| 0026                   | 218019   | Chrysene         | 3.90E-02                      | 1.20E-01                       | *                         | *                           | *                  |
| 0027                   | 7439921  | Lead             | 4.20E-02                      | 8.50E-03                       | *                         | *                           | *                  |
| 0028                   | 7439965  | Manganese        | *                             | *                              | 9.00E-02                  | *                           | *                  |
| 0029                   | 7439976  | Mercury          | *                             | *                              | 3.00E-02                  | 1.60E-04                    | 6.00E-01           |
| 0030                   | 7440020  | Nickel           | 9.10E-01                      | *                              | 5.00E-02                  | 5.00E-02                    | 6.00E+00           |
| 0031                   | 7440224  | Silver           | *                             | *                              | *                         | *                           | *                  |
| 0032                   | 7440280  | Thallium         | *                             | *                              | *                         | *                           | *                  |
| 0033                   | 7440360  | Antimony         | *                             | *                              | *                         | *                           | *                  |
| 0034                   | 7440382  | Arsenic          | 1.20E+01                      | 1.50E+00                       | 1.50E-02                  | 3.50E-06                    | 2.00E-01           |
| 0035                   | 7440393  | Barium           | *                             | *                              | *                         | *                           | *                  |
| 0036                   | 7440417  | Beryllium        | 8.40E+00                      | *                              | 7.00E-03                  | 2.00E-03                    | *                  |

PAHS, total, w/o individ. components reported [Treated as B(a)P for HRA]



File: C:\HARP\PROJECTS\2709ValCogen\2709 MCH.txt 9/7/2011, 2:51:16PM

|      |          |               |          |   |          |          |          |          |
|------|----------|---------------|----------|---|----------|----------|----------|----------|
| 0037 | 7440439  | Cadmium       | 1.50E+01 | * | *        | 2.00E-02 | 5.00E-04 | *        |
| 0038 | 7440473  | Chromium      | *        | * | *        | *        | *        | *        |
| 0039 | 7440508  | Copper        | *        | * | *        | *        | *        | 1.00E+02 |
| 0040 | 7440666  | Zinc          | *        | * | *        | *        | *        | *        |
| 0041 | 7723140  | Phosphorus    | *        | * | *        | *        | *        | *        |
| 0042 | 7782492  | Selenium      | *        | * | 2.00E+01 | *        | *        | *        |
| 0043 | 7783064  | H2S           | *        | * | 1.00E+01 | *        | *        | 4.20E+01 |
| 0044 | 18540299 | Cr(VI)        | 5.10E+02 | * | 2.00E-01 | 2.00E-02 | *        | *        |
| 0045 | 7664417  | NH3           | *        | * | 2.00E+02 | *        | *        | 3.20E+03 |
| 0046 | 106990   | 1,3-Butadiene | 6.00E-01 | * | 7.00E+02 | *        | *        | 2.20E+04 |
| 0047 | 1330207  | Xylenes       | *        | * | *        | *        | *        | *        |
| 0048 | 1151     | PAHs-w/o      | 3.90E+00 | * | 1.20E+01 | *        | *        | *        |
| 0049 | 110543   | Hexane        | *        | * | 7.00E+03 | *        | *        | *        |

EMISSIONS DATA SOURCE: Emission rates loaded from database  
 CHEMICALS ADDED OR DELETED: none

EMISSIONS FOR FACILITY FAC=2644 DEV=104 PRO=1 STK=104 NAME=VALERO REFINERY STACK 104 EMS (lbs/yr)

| CAS     | ABBRV            | MULTIPLIER | BG (ug/m^3) | AVRG (lbs/yr) | MAX (lbs/hr)   |
|---------|------------------|------------|-------------|---------------|----------------|
| 50000   | Formaldehyde     | 1          | 0           | 2342.496207   | 0.267408243    |
| 50328   | B[a]P            | 1          | 0           | 0.000716018   | 0.00000081737  |
| 53703   | D[a,h]anthracen  | 1          | 0           | 0.000716018   | 0.00000081737  |
| 56553   | B[a]anthracene   | 1          | 0           | 0.000716018   | 0.00000081737  |
| 71432   | Benzene          | 1          | 39.49877813 | 0.004508993   | 0.004508993    |
| 75070   | Acetaldehyde     | 1          | 0           | 298.3168356   | 0.034054433    |
| 85018   | Phenanthrene     | 1          | 0           | 0.021480537   | 0.00000245212  |
| 86737   | Fluorene         | 1          | 0           | 0.007160179   | 0.000000817372 |
| 91203   | Naphthalene      | 1          | 0           | 4.050269385   | 0.00046236     |
| 91576   | 2MeNaphthalene   | 1          | 0           | 0.010597065   | 0.00000120971  |
| 100414  | Ethyl Benzene    | 1          | 0           | 100.7667503   | 0.011503054    |
| 108883  | Toluene          | 1          | 0           | 404.8991527   | 0.046221364    |
| 108907  | Chlorobenzn      | 1          | 0           | 5.077567983   | 0.000579631    |
| 108952  | Phenol           | 1          | 0           | 202.2788796   | 0.023091196    |
| 115071  | Propylene        | 1          | 0           | 89.72570225   | 0.01024266     |
| 120127  | Anthracene       | 1          | 0           | 0.000875187   | 0.0000009907   |
| 129000  | Pyrene           | 1          | 0           | 0.004868922   | 0.00000055813  |
| 191242  | B[g,h,i]perylene | 1          | 0           | 0.009308233   | 0.00000106258  |
| 192972  | B[e]pyrene       | 1          | 0           | 0.000498633   | 0.00000056921  |
| 193395  | Inf[1,2,3-cd]pyr | 1          | 0           | 0.000716018   | 0.00000081737  |
| 198550  | Perylene         | 1          | 0           | 0.000716018   | 0.00000081737  |
| 205992  | B[b]fluoranthen  | 1          | 0           | 0.000716018   | 0.00000081737  |
| 206440  | Fluoranthene     | 1          | 0           | 0.004868922   | 0.00000055813  |
| 207089  | B[k]fluoranthen  | 1          | 0           | 0.000716018   | 0.00000081737  |
| 208968  | Acenaphthylene   | 1          | 0           | 0.000716018   | 0.00000081737  |
| 218019  | Chrysene         | 1          | 0           | 0.000716018   | 0.00000081737  |
| 7439921 | Lead             | 1          | 0           | 0.957674351   | 0.000109324    |
| 7439965 | Manganese        | 1          | 0           | 0.668651519   | 0.0000763301   |
| 7439976 | Mercury          | 1          | 0           | 0.440801534   | 0.0000503198   |
| 7440020 | Nickel           | 1          | 0           | 1.309773847   | 0.000149518    |
| 7440224 | Silver           | 1          | 0           | 2.278154777   | 0.000260063    |
| 7440280 | Thallium         | 1          | 0           | 8.168632322   | 0.000932492    |
| 7440360 | Antimony         | 1          | 0           | 0.731275097   | 0.0000834789   |
| 7440382 | Arsenic          | 1          | 0           | 0.086305449   | 0.00000985222  |
| 7440393 | Barium           | 1          | 0           | 8.168632322   | 0.000932492    |
| 7440417 | Beryllium        | 1          | 0           | 0.012885452   | 0.00000147094  |

File: C:\HARP\PROJECTS\2709ValCogen1\2709 MCH1.txt 9/7/2011, 2:51:16PM

| CAS                             | ABBREV           | MULTIPLIER | DEV=104     | PRO=2         | STK=105       | NAME=VALERO REFINERY | STACK 105 | EMS (lbs/yr) |
|---------------------------------|------------------|------------|-------------|---------------|---------------|----------------------|-----------|--------------|
| SOURCE                          | MULTIPLIER=1     |            |             |               |               |                      |           |              |
|                                 |                  |            | BG (ug/m^3) | AVRG (lbs/yr) | MAX (lbs/hr)  |                      |           |              |
| 7440439                         | Cadmium          | 1          | 0           | 0.031268092   | 0.00000356942 |                      |           |              |
| 7440473                         | Chromium         | 1          | 0           | 0.308831789   | 0.0000352548  |                      |           |              |
| 7440508                         | Copper           | 1          | 0           | 0.631161925   | 0.0000720504  |                      |           |              |
| 7440666                         | Zinc             | 1          | 0           | 20.87817497   | 0.002383353   |                      |           |              |
| 7723140                         | Phosphorus       | 1          | 0           | 0.907485964   | 0.000103594   |                      |           |              |
| 7782492                         | Selenium         | 1          | 0           | 0.310525129   | 0.0000354481  |                      |           |              |
| 7783064                         | H2S              | 1          | 0           | 307.3597102   | 0.035086725   |                      |           |              |
| 18540299                        | Cr(VI)           | 1          | 0           | 0.104511242   | 0.0000119305  |                      |           |              |
| 7664417                         | NH3              | 1          | 0           | 24297.69368   | 2.773709324   |                      |           |              |
| 106990                          | 1,3-Butadiene    | 1          | 0           | 1.292461557   | 0.0000976026  |                      |           |              |
| 1330207                         | Xylenes          | 1          | 0           | 192.2499764   | 0.0000333978  |                      |           |              |
| 1151                            | PAHs-w/o         | 1          | 0           | 2.702687264   | 0.033057385   |                      |           | *            |
| 110543                          | Hexane           | 1          | 0           |               |               |                      |           | *            |
| EMISSIONS FOR FACILITY FAC=2644 |                  |            |             |               |               |                      |           |              |
| SOURCE MULTIPLIER=1             |                  |            |             |               |               |                      |           |              |
| 50000                           | Formaldehyde     | 1          | 0           |               |               |                      |           | *            |
| 50328                           | B[a]p            | 1          | 0           |               |               |                      |           | *            |
| 53703                           | D[a,h]anthracen  | 1          | 0           |               |               |                      |           | *            |
| 56553                           | B[a]anthracene   | 1          | 0           |               |               |                      |           | *            |
| 71432                           | Benzene          | 1          | 0           |               |               |                      |           | *            |
| 75070                           | Acetaldehyde     | 1          | 0           |               |               |                      |           | *            |
| 85018                           | Phenanthrene     | 1          | 0           |               |               |                      |           | *            |
| 86737                           | Fluorene         | 1          | 0           |               |               |                      |           | *            |
| 91203                           | Naphthalene      | 1          | 0           |               |               |                      |           | *            |
| 91576                           | 2MeNaphthalene   | 1          | 0           |               |               |                      |           | *            |
| 100414                          | Ethyl Benzene    | 1          | 0           |               |               |                      |           | *            |
| 108883                          | Toluene          | 1          | 0           |               |               |                      |           | *            |
| 108907                          | Chlorobenzn      | 1          | 0           |               |               |                      |           | *            |
| 108952                          | Phenol           | 1          | 0           |               |               |                      |           | *            |
| 115071                          | Propylene        | 1          | 0           | 125.34        | 0.014308      |                      |           | *            |
| 120127                          | Anthracene       | 1          | 0           |               |               |                      |           | *            |
| 129000                          | Pyrene           | 1          | 0           |               |               |                      |           | *            |
| 191242                          | B[g,h,i]perylene | 1          | 0           |               |               |                      |           | *            |
| 192972                          | B[e]pyrene       | 1          | 0           |               |               |                      |           | *            |
| 193395                          | In[1,2,3-cd]pyr  | 1          | 0           |               |               |                      |           | *            |
| 198550                          | perylene         | 1          | 0           |               |               |                      |           | *            |
| 205992                          | B[b]fluoranthen  | 1          | 0           |               |               |                      |           | *            |
| 206440                          | Fluoranthene     | 1          | 0           |               |               |                      |           | *            |
| 207089                          | B[k]fluoranthen  | 1          | 0           |               |               |                      |           | *            |
| 208968                          | Acenaphthylene   | 1          | 0           |               |               |                      |           | *            |
| 218019                          | Chrysene         | 1          | 0           |               |               |                      |           | *            |
| 7439921                         | Lead             | 1          | 0           |               |               |                      |           | *            |
| 7439965                         | Manganese        | 1          | 0           |               |               |                      |           | *            |
| 7439976                         | Mercury          | 1          | 0           |               |               |                      |           | *            |
| 7440020                         | Nickel           | 1          | 0           |               |               |                      |           | *            |
| 7440224                         | Silver           | 1          | 0           |               |               |                      |           | *            |
| 7440280                         | Thallium         | 1          | 0           |               |               |                      |           | *            |
| 7440360                         | Antimony         | 1          | 0           |               |               |                      |           | *            |
| 7440382                         | Arsenic          | 1          | 0           |               |               |                      |           | *            |
| 7440393                         | Barium           | 1          | 0           |               |               |                      |           | *            |
| 7440417                         | Beryllium        | 1          | 0           |               |               |                      |           | *            |
| 7440439                         | Cadmium          | 1          | 0           |               |               |                      |           | *            |
| 7440473                         | Chromium         | 1          | 0           |               |               |                      |           | *            |
| 7440508                         | Copper           | 1          | 0           |               |               |                      |           | *            |

File: C:\HARP\PROJECTS\2709ValCogen1\2709 MCH.txt 9/7/2011, 2:51:16PM

| CHEM     | CV            | CNS | BONE | DEVEL | ENDO | EYE | GILV  | IMMUN | KIDN | REPRO     | RESP | SKIN | BLOOD | MAX | UTIME |
|----------|---------------|-----|------|-------|------|-----|-------|-------|------|-----------|------|------|-------|-----|-------|
| 7440666  | Zinc          |     |      |       | 1    | 0   |       |       |      | *         |      |      |       |     |       |
| 7723140  | Phosphorus    |     |      |       | 1    | 0   |       |       |      | *         |      |      |       |     |       |
| 7782492  | Selenium      |     |      |       | 1    | 0   |       |       |      | *         |      |      |       |     |       |
| 7783064  | H2S           |     |      |       | 1    | 0   | 0.45  |       |      | 0.0000513 |      |      |       |     |       |
| 18540299 | Cr(VI)        |     |      |       | 1    | 0   |       |       |      | *         |      |      |       |     |       |
| 7664417  | NH3           |     |      |       | 1    | 0   | 1124  |       |      | 0.128311  |      |      |       |     |       |
| 106990   | 1,3-Butadiene |     |      |       | 1    | 0   |       |       |      | *         |      |      |       |     |       |
| 1330207  | Xylenes       |     |      |       | 1    | 0   |       |       |      | *         |      |      |       |     |       |
| 1151     | PAHs-w/o      |     |      |       | 1    | 0   |       |       |      | *         |      |      |       |     |       |
| 110543   | Hexane        |     |      |       | 1    | 0   | 20.44 |       |      | 0.002334  |      |      |       |     |       |

CHRONIC HI REPORT

AVERAGE CHRONIC HI, RECEPTOR 647

| CHEM | CV       | CNS      | BONE     | DEVEL    | ENDO     | EYE      | GILV     | IMMUN    | KIDN     | REPRO    | RESP     | SKIN     | BLOOD    | MAX      | UTIME |
|------|----------|----------|----------|----------|----------|----------|----------|----------|----------|----------|----------|----------|----------|----------|-------|
| 0001 | 0.00E+00 | 0.00E+00 | 0.00E+00 | 0.00E+00 | 0.00E+00 | 0.00E+00 | 0.00E+00 | 0.00E+00 | 0.00E+00 | 0.00E+00 | 1.24E-03 | 0.00E+00 | 0.00E+00 | 1.24E-03 |       |
| 0002 | 0.00E+00 | 0.00E+00 | 0.00E+00 | 0.00E+00 | 0.00E+00 | 0.00E+00 | 0.00E+00 | 0.00E+00 | 0.00E+00 | 0.00E+00 | 0.00E+00 | 0.00E+00 | 0.00E+00 | 0.00E+00 |       |
| 0003 | 0.00E+00 | 0.00E+00 | 0.00E+00 | 0.00E+00 | 0.00E+00 | 0.00E+00 | 0.00E+00 | 0.00E+00 | 0.00E+00 | 0.00E+00 | 0.00E+00 | 0.00E+00 | 0.00E+00 | 0.00E+00 |       |
| 0004 | 0.00E+00 | 0.00E+00 | 0.00E+00 | 0.00E+00 | 0.00E+00 | 0.00E+00 | 0.00E+00 | 0.00E+00 | 0.00E+00 | 0.00E+00 | 0.00E+00 | 0.00E+00 | 0.00E+00 | 0.00E+00 |       |
| 0005 | 0.00E+00 | 3.13E-06 | 0.00E+00 | 3.13E-06 | 0.00E+00 | 0.00E+00 | 0.00E+00 | 0.00E+00 | 0.00E+00 | 0.00E+00 | 0.00E+00 | 0.00E+00 | 3.13E-06 | 3.13E-06 |       |
| 0006 | 0.00E+00 | 0.00E+00 | 0.00E+00 | 0.00E+00 | 0.00E+00 | 0.00E+00 | 0.00E+00 | 0.00E+00 | 0.00E+00 | 0.00E+00 | 1.01E-05 | 0.00E+00 | 0.00E+00 | 1.01E-05 |       |
| 0007 | 0.00E+00 | 0.00E+00 | 0.00E+00 | 0.00E+00 | 0.00E+00 | 0.00E+00 | 0.00E+00 | 0.00E+00 | 0.00E+00 | 0.00E+00 | 0.00E+00 | 0.00E+00 | 0.00E+00 | 0.00E+00 |       |
| 0008 | 0.00E+00 | 0.00E+00 | 0.00E+00 | 0.00E+00 | 0.00E+00 | 0.00E+00 | 0.00E+00 | 0.00E+00 | 0.00E+00 | 0.00E+00 | 0.00E+00 | 0.00E+00 | 0.00E+00 | 0.00E+00 |       |
| 0009 | 0.00E+00 | 0.00E+00 | 0.00E+00 | 0.00E+00 | 0.00E+00 | 0.00E+00 | 0.00E+00 | 0.00E+00 | 0.00E+00 | 0.00E+00 | 2.14E-06 | 0.00E+00 | 0.00E+00 | 2.14E-06 |       |
| 0010 | 0.00E+00 | 0.00E+00 | 0.00E+00 | 0.00E+00 | 0.00E+00 | 0.00E+00 | 0.00E+00 | 0.00E+00 | 0.00E+00 | 0.00E+00 | 0.00E+00 | 0.00E+00 | 0.00E+00 | 0.00E+00 |       |
| 0011 | 0.00E+00 | 0.00E+00 | 0.00E+00 | 0.00E+00 | 2.39E-07 | 0.00E+00 | 2.39E-07 | 0.00E+00 | 2.39E-07 | 0.00E+00 | 0.00E+00 | 0.00E+00 | 0.00E+00 | 0.00E+00 |       |
| 0012 | 0.00E+00 | 6.41E-06 | 0.00E+00 | 6.41E-06 | 0.00E+00 | 0.00E+00 | 0.00E+00 | 0.00E+00 | 0.00E+00 | 0.00E+00 | 6.41E-06 | 0.00E+00 | 0.00E+00 | 6.41E-06 |       |
| 0013 | 0.00E+00 | 0.00E+00 | 0.00E+00 | 0.00E+00 | 0.00E+00 | 0.00E+00 | 2.41E-08 | 0.00E+00 | 2.41E-08 | 0.00E+00 | 0.00E+00 | 0.00E+00 | 0.00E+00 | 2.41E-08 |       |
| 0014 | 4.81E-06 | 4.81E-06 | 0.00E+00 | 0.00E+00 | 0.00E+00 | 0.00E+00 | 4.81E-06 | 0.00E+00 | 4.81E-06 | 0.00E+00 | 0.00E+00 | 0.00E+00 | 0.00E+00 | 4.81E-06 |       |
| 0015 | 0.00E+00 | 0.00E+00 | 0.00E+00 | 0.00E+00 | 0.00E+00 | 0.00E+00 | 0.00E+00 | 0.00E+00 | 0.00E+00 | 0.00E+00 | 1.90E-06 | 0.00E+00 | 0.00E+00 | 1.90E-06 |       |
| 0016 | 0.00E+00 | 0.00E+00 | 0.00E+00 | 0.00E+00 | 0.00E+00 | 0.00E+00 | 0.00E+00 | 0.00E+00 | 0.00E+00 | 0.00E+00 | 0.00E+00 | 0.00E+00 | 0.00E+00 | 0.00E+00 |       |
| 0017 | 0.00E+00 | 0.00E+00 | 0.00E+00 | 0.00E+00 | 0.00E+00 | 0.00E+00 | 0.00E+00 | 0.00E+00 | 0.00E+00 | 0.00E+00 | 0.00E+00 | 0.00E+00 | 0.00E+00 | 0.00E+00 |       |
| 0018 | 0.00E+00 | 0.00E+00 | 0.00E+00 | 0.00E+00 | 0.00E+00 | 0.00E+00 | 0.00E+00 | 0.00E+00 | 0.00E+00 | 0.00E+00 | 0.00E+00 | 0.00E+00 | 0.00E+00 | 0.00E+00 |       |
| 0019 | 0.00E+00 | 0.00E+00 | 0.00E+00 | 0.00E+00 | 0.00E+00 | 0.00E+00 | 0.00E+00 | 0.00E+00 | 0.00E+00 | 0.00E+00 | 0.00E+00 | 0.00E+00 | 0.00E+00 | 0.00E+00 |       |
| 0020 | 0.00E+00 | 0.00E+00 | 0.00E+00 | 0.00E+00 | 0.00E+00 | 0.00E+00 | 0.00E+00 | 0.00E+00 | 0.00E+00 | 0.00E+00 | 0.00E+00 | 0.00E+00 | 0.00E+00 | 0.00E+00 |       |
| 0021 | 0.00E+00 | 0.00E+00 | 0.00E+00 | 0.00E+00 | 0.00E+00 | 0.00E+00 | 0.00E+00 | 0.00E+00 | 0.00E+00 | 0.00E+00 | 0.00E+00 | 0.00E+00 | 0.00E+00 | 0.00E+00 |       |
| 0022 | 0.00E+00 | 0.00E+00 | 0.00E+00 | 0.00E+00 | 0.00E+00 | 0.00E+00 | 0.00E+00 | 0.00E+00 | 0.00E+00 | 0.00E+00 | 0.00E+00 | 0.00E+00 | 0.00E+00 | 0.00E+00 |       |
| 0023 | 0.00E+00 | 0.00E+00 | 0.00E+00 | 0.00E+00 | 0.00E+00 | 0.00E+00 | 0.00E+00 | 0.00E+00 | 0.00E+00 | 0.00E+00 | 0.00E+00 | 0.00E+00 | 0.00E+00 | 0.00E+00 |       |
| 0024 | 0.00E+00 | 0.00E+00 | 0.00E+00 | 0.00E+00 | 0.00E+00 | 0.00E+00 | 0.00E+00 | 0.00E+00 | 0.00E+00 | 0.00E+00 | 0.00E+00 | 0.00E+00 | 0.00E+00 | 0.00E+00 |       |
| 0025 | 0.00E+00 | 0.00E+00 | 0.00E+00 | 0.00E+00 | 0.00E+00 | 0.00E+00 | 0.00E+00 | 0.00E+00 | 0.00E+00 | 0.00E+00 | 0.00E+00 | 0.00E+00 | 0.00E+00 | 0.00E+00 |       |
| 0026 | 0.00E+00 | 0.00E+00 | 0.00E+00 | 0.00E+00 | 0.00E+00 | 0.00E+00 | 0.00E+00 | 0.00E+00 | 0.00E+00 | 0.00E+00 | 0.00E+00 | 0.00E+00 | 0.00E+00 | 0.00E+00 |       |
| 0027 | 0.00E+00 | 0.00E+00 | 0.00E+00 | 0.00E+00 | 0.00E+00 | 0.00E+00 | 0.00E+00 | 0.00E+00 | 0.00E+00 | 0.00E+00 | 0.00E+00 | 0.00E+00 | 0.00E+00 | 0.00E+00 |       |
| 0028 | 0.00E+00 | 3.53E-05 | 0.00E+00 | 0.00E+00 | 0.00E+00 | 0.00E+00 | 0.00E+00 | 0.00E+00 | 0.00E+00 | 0.00E+00 | 0.00E+00 | 0.00E+00 | 0.00E+00 | 3.53E-05 |       |
| 0029 | 0.00E+00 | 1.87E-04 | 0.00E+00 | 1.87E-04 | 0.00E+00 | 0.00E+00 | 0.00E+00 | 0.00E+00 | 1.87E-04 | 0.00E+00 | 0.00E+00 | 0.00E+00 | 0.00E+00 | 1.87E-04 |       |
| 0030 | 0.00E+00 | 0.00E+00 | 0.00E+00 | 0.00E+00 | 0.00E+00 | 0.00E+00 | 6.15E-07 | 0.00E+00 | 0.00E+00 | 0.00E+00 | 1.24E-04 | 0.00E+00 | 0.00E+00 | 1.24E-04 |       |
| 0031 | 0.00E+00 | 0.00E+00 | 0.00E+00 | 0.00E+00 | 0.00E+00 | 0.00E+00 | 0.00E+00 | 0.00E+00 | 0.00E+00 | 0.00E+00 | 0.00E+00 | 0.00E+00 | 0.00E+00 | 0.00E+00 |       |
| 0032 | 0.00E+00 | 0.00E+00 | 0.00E+00 | 0.00E+00 | 0.00E+00 | 0.00E+00 | 0.00E+00 | 0.00E+00 | 0.00E+00 | 0.00E+00 | 0.00E+00 | 0.00E+00 | 0.00E+00 | 0.00E+00 |       |
| 0033 | 0.00E+00 | 0.00E+00 | 0.00E+00 | 0.00E+00 | 0.00E+00 | 0.00E+00 | 0.00E+00 | 0.00E+00 | 0.00E+00 | 0.00E+00 | 0.00E+00 | 0.00E+00 | 0.00E+00 | 0.00E+00 |       |
| 0034 | 5.34E-04 | 5.34E-04 | 0.00E+00 | 5.34E-04 | 0.00E+00 | 0.00E+00 | 0.00E+00 | 0.00E+00 | 0.00E+00 | 0.00E+00 | 5.34E-04 | 0.00E+00 | 0.00E+00 | 5.34E-04 |       |
| 0035 | 0.00E+00 | 0.00E+00 | 0.00E+00 | 0.00E+00 | 0.00E+00 | 0.00E+00 | 0.00E+00 | 0.00E+00 | 0.00E+00 | 0.00E+00 | 0.00E+00 | 0.00E+00 | 0.00E+00 | 0.00E+00 |       |
| 0036 | 0.00E+00 | 0.00E+00 | 0.00E+00 | 0.00E+00 | 0.00E+00 | 0.00E+00 | 1.08E-07 | 8.75E-06 | 0.00E+00 | 0.00E+00 | 8.75E-06 | 0.00E+00 | 0.00E+00 | 8.75E-06 |       |
| 0037 | 0.00E+00 | 0.00E+00 | 0.00E+00 | 0.00E+00 | 0.00E+00 | 0.00E+00 | 0.00E+00 | 0.00E+00 | 9.08E-06 | 0.00E+00 | 7.43E-06 | 0.00E+00 | 0.00E+00 | 9.08E-06 |       |
| 0038 | 0.00E+00 | 0.00E+00 | 0.00E+00 | 0.00E+00 | 0.00E+00 | 0.00E+00 | 0.00E+00 | 0.00E+00 | 0.00E+00 | 0.00E+00 | 0.00E+00 | 0.00E+00 | 0.00E+00 | 0.00E+00 |       |
| 0039 | 0.00E+00 | 0.00E+00 | 0.00E+00 | 0.00E+00 | 0.00E+00 | 0.00E+00 | 0.00E+00 | 0.00E+00 | 0.00E+00 | 0.00E+00 | 0.00E+00 | 0.00E+00 | 0.00E+00 | 0.00E+00 |       |
| 0040 | 0.00E+00 | 0.00E+00 | 0.00E+00 | 0.00E+00 | 0.00E+00 | 0.00E+00 | 0.00E+00 | 0.00E+00 | 0.00E+00 | 0.00E+00 | 0.00E+00 | 0.00E+00 | 0.00E+00 | 0.00E+00 |       |



File: C:\HARP\PROJECTS\2709Val\Cogen1\2709 MAHI.txt 9/7/2011, 2:50:39PM

This file: C:\HARP\PROJECTS\2709Val\Cogen1\2709 MAHI.txt

Created by HARP Version 1.4d Build 23.09.07

Uses ISC Version 99155

Uses BPIP (Dated: 04112)

Creation date: 9/9/2011 5:18:02 PM

EXCEPTION REPORT

(there have been no changes or exceptions)

INPUT FILES:

Source-Receptor file: C:\HARP\PROJECTS\2709Val\Cogen1\2709CGN1.SRC

Averaging period adjustment factors file: not applicable

Emission rates file: database

Site parameters file: C:\HARP\PROJECTS\resident pathway.sit

Coordinate system: UTM NAD27

Screening mode is OFF

Analysis method: Point Estimate  
 Health effect: Acute HI Simple (Concurrent Max.)

Receptor(s): 634

Sources(s): All

Chemicals(s): All

C-51

CHEMICAL CROSS-REFERENCE TABLE AND BACKGROUND CONCENTRATIONS

| CHEM | CAS     | ABBREVIATION    | POLLUTANT NAME         | BACKGROUND (ug/m <sup>3</sup> ) |
|------|---------|-----------------|------------------------|---------------------------------|
| 0001 | 50000   | Formaldehyde    | Formaldehyde           | 0.000E+00                       |
| 0002 | 50328   | B[a]p           | Benz[a]pyrene          | 0.000E+00                       |
| 0003 | 53703   | D[a,h]anthracen | Dibenz[a,h]anthracene  | 0.000E+00                       |
| 0004 | 56553   | B[a]anthracene  | Benz[a]anthracene      | 0.000E+00                       |
| 0005 | 71432   | Benzene         | Benzene                | 0.000E+00                       |
| 0006 | 75070   | Acetaldehyde    | Acetaldehyde           | 0.000E+00                       |
| 0007 | 85018   | Phenanthrene    | Phenanthrene           | 0.000E+00                       |
| 0008 | 86737   | Fluorene        | Fluorene               | 0.000E+00                       |
| 0009 | 91203   | Naphthalene     | Naphthalene            | 0.000E+00                       |
| 0010 | 91576   | 2MeNaphthalene  | 2-Methyl naphthalene   | 0.000E+00                       |
| 0011 | 100414  | Ethyl Benzene   | Ethyl benzene          | 0.000E+00                       |
| 0012 | 108883  | Toluene         | Toluene                | 0.000E+00                       |
| 0013 | 108907  | Chlorobenzn     | Chlorobenzene          | 0.000E+00                       |
| 0014 | 108952  | Phenol          | Phenol                 | 0.000E+00                       |
| 0015 | 115071  | Propylene       | Propylene              | 0.000E+00                       |
| 0016 | 120127  | Anthracene      | Anthracene             | 0.000E+00                       |
| 0017 | 129000  | Pyrene          | Pyrene                 | 0.000E+00                       |
| 0018 | 191242  | B[g,h,i]perylen | Benz[g,h,i]perylene    | 0.000E+00                       |
| 0019 | 192972  | B[e]pyrene      | Benz[e]pyrene          | 0.000E+00                       |
| 0020 | 193395  | In[1,2,3-cd]pyr | Indeno[1,2,3-cd]pyrene | 0.000E+00                       |
| 0021 | 198550  | Perylene        | Perylene               | 0.000E+00                       |
| 0022 | 205992  | B[b]fluoranthen | Benz[b]fluoranthene    | 0.000E+00                       |
| 0023 | 206440  | Fluoranthene    | Fluoranthene           | 0.000E+00                       |
| 0024 | 207089  | B[k]fluoranthen | Benz[k]fluoranthene    | 0.000E+00                       |
| 0025 | 208968  | Acenaphthylene  | Acenaphthylene         | 0.000E+00                       |
| 0026 | 218019  | Chrysene        | Chrysene               | 0.000E+00                       |
| 0027 | 7439921 | Lead            | Lead                   | 0.000E+00                       |

| CHEM | CAS      | ABBREVIATION  | CancerPF(Inh)<br>(mg/kg-d)^-1 | CancerPF(Oral)<br>(mg/kg-d)^-1 | ChronicREL(Inh)<br>ug/m^3 | ChronicREL(Oral)<br>mg/kg-d | AcuteREL<br>ug/m^3 |
|------|----------|---------------|-------------------------------|--------------------------------|---------------------------|-----------------------------|--------------------|
| 0028 | 7439965  | Manganese     |                               |                                |                           |                             | 0.000E+00          |
| 0029 | 7439976  | Mercury       |                               |                                |                           |                             | 0.000E+00          |
| 0030 | 7440020  | Nickel        |                               |                                |                           |                             | 0.000E+00          |
| 0031 | 7440224  | Silver        |                               |                                |                           |                             | 0.000E+00          |
| 0032 | 7440280  | Thallium      |                               |                                |                           |                             | 0.000E+00          |
| 0033 | 7440360  | Antimony      |                               |                                |                           |                             | 0.000E+00          |
| 0034 | 7440382  | Arsenic       |                               |                                |                           |                             | 0.000E+00          |
| 0035 | 7440393  | Barium        |                               |                                |                           |                             | 0.000E+00          |
| 0036 | 7440417  | Beryllium     |                               |                                |                           |                             | 0.000E+00          |
| 0037 | 7440439  | Cadmium       |                               |                                |                           |                             | 0.000E+00          |
| 0038 | 7440473  | Chromium      |                               |                                |                           |                             | 0.000E+00          |
| 0039 | 7440508  | Copper        |                               |                                |                           |                             | 0.000E+00          |
| 0040 | 7440666  | Zinc          |                               |                                |                           |                             | 0.000E+00          |
| 0041 | 7723140  | Phosphorus    |                               |                                |                           |                             | 0.000E+00          |
| 0042 | 7782492  | Selenium      |                               |                                |                           |                             | 0.000E+00          |
| 0043 | 7783064  | H2S           |                               |                                |                           |                             | 0.000E+00          |
| 0044 | 18540299 | Cr(VI)        |                               |                                |                           |                             | 0.000E+00          |
| 0045 | 7664417  | NH3           |                               |                                |                           |                             | 0.000E+00          |
| 0046 | 106990   | 1,3-Butadiene |                               |                                |                           |                             | 0.000E+00          |
| 0047 | 1330207  | Xylenes       |                               |                                |                           |                             | 0.000E+00          |
| 0048 | 1151     | PAHS-w/o      |                               |                                |                           |                             | 0.000E+00          |
| 0049 | 110543   | Hexane        |                               |                                |                           |                             | 0.000E+00          |

PAHS, total, w/o individ. components reported [Treated as B(a)P for HRA]

CHEMICAL HEALTH VALUES

| CHEM | CAS     | ABBREVIATION     | CancerPF(Inh)<br>(mg/kg-d)^-1 | CancerPF(Oral)<br>(mg/kg-d)^-1 | ChronicREL(Inh)<br>ug/m^3 | ChronicREL(Oral)<br>mg/kg-d | AcuteREL<br>ug/m^3 |
|------|---------|------------------|-------------------------------|--------------------------------|---------------------------|-----------------------------|--------------------|
| 0001 | 50000   | Formaldehyde     | 2.10E-02                      | *                              | 9.00E+00                  | *                           | 5.50E+01           |
| 0002 | 50328   | B[a]P            | 3.90E+00                      | 1.20E+01                       | *                         | *                           | *                  |
| 0003 | 53703   | D[a,h]anthracen  | 4.10E+00                      | 4.10E+00                       | *                         | *                           | *                  |
| 0004 | 56553   | B[a]anthracene   | 3.90E-01                      | 1.20E+00                       | *                         | *                           | *                  |
| 0005 | 71432   | Benzene          | 1.00E-01                      | *                              | 6.00E+01                  | *                           | 1.30E+03           |
| 0006 | 75070   | Acetaldehyde     | 1.00E-02                      | *                              | 1.40E+02                  | *                           | 4.70E+02           |
| 0007 | 85018   | Phenanthrene     | *                             | *                              | *                         | *                           | *                  |
| 0008 | 86737   | Fluorene         | *                             | *                              | 9.00E+00                  | *                           | *                  |
| 0009 | 91203   | Naphthalene      | 1.20E-01                      | *                              | *                         | *                           | *                  |
| 0010 | 91576   | 2MeNaphthalene   | *                             | *                              | *                         | *                           | *                  |
| 0011 | 100414  | Ethyl Benzene    | 8.70E-03                      | *                              | 2.00E+03                  | *                           | 3.70E+04           |
| 0012 | 108883  | Toluene          | *                             | *                              | 3.00E+02                  | *                           | *                  |
| 0013 | 108907  | Chlorobenzn      | *                             | *                              | 1.00E+03                  | *                           | *                  |
| 0014 | 108952  | Phenol           | *                             | *                              | 2.00E+02                  | *                           | 5.80E+03           |
| 0015 | 115071  | Propylene        | *                             | *                              | 3.00E+03                  | *                           | *                  |
| 0016 | 120127  | Anthracene       | *                             | *                              | *                         | *                           | *                  |
| 0017 | 129000  | Pyrene           | *                             | *                              | *                         | *                           | *                  |
| 0018 | 191242  | B[g,h,i]perylene | *                             | *                              | *                         | *                           | *                  |
| 0019 | 192972  | B[e]pyrene       | *                             | *                              | *                         | *                           | *                  |
| 0020 | 193395  | In[1,2,3-cd]pyr  | 3.90E-01                      | 1.20E+00                       | *                         | *                           | *                  |
| 0021 | 198550  | Perylene         | *                             | *                              | *                         | *                           | *                  |
| 0022 | 205992  | B[b]fluoranthen  | 3.90E-01                      | 1.20E+00                       | *                         | *                           | *                  |
| 0023 | 206440  | Fluoranthene     | *                             | *                              | *                         | *                           | *                  |
| 0024 | 207089  | B[k]fluoranthen  | 3.90E-01                      | 1.20E+00                       | *                         | *                           | *                  |
| 0025 | 208968  | Acenaphthylene   | *                             | *                              | *                         | *                           | *                  |
| 0026 | 218019  | Chrysene         | 3.90E-02                      | 1.20E-01                       | *                         | *                           | *                  |
| 0027 | 7439921 | Lead             | 4.20E-02                      | 8.50E-03                       | *                         | *                           | *                  |
| 0028 | 7439965 | Manganese        | *                             | *                              | 9.00E-02                  | *                           | 6.00E-01           |
| 0029 | 7439976 | Mercury          | *                             | *                              | 3.00E-02                  | 1.60E-04                    | *                  |

File: C:\HARP\PROJECTS\2709ValCogen\12709 MAHI.txt 9/7/2011, 2:50:39PM

| CAS  | ABREV         | DEVT=104 | PRO=1    | STK=104  | NAME=VALERO REFINERY STACK 104 | EMS (lbs/yr) |
|------|---------------|----------|----------|----------|--------------------------------|--------------|
| 0030 | Nickel        | 9.10E-01 | *        | 5.00E-02 | 5.00E-02                       | 6.00E+00     |
| 0031 | Silver        | *        | *        | *        | *                              | *            |
| 0032 | Thallium      | *        | *        | *        | *                              | *            |
| 0033 | Antimony      | *        | *        | *        | *                              | *            |
| 0034 | Arsenic       | 1.20E+01 | 1.50E+00 | 1.50E-02 | 3.50E-06                       | 2.00E-01     |
| 0035 | Barium        | *        | *        | *        | *                              | *            |
| 0036 | Beryllium     | 8.40E+00 | *        | 7.00E-03 | 2.00E-03                       | *            |
| 0037 | Cadmium       | 1.50E+01 | *        | 2.00E-02 | 5.00E-04                       | *            |
| 0038 | Chromium      | *        | *        | *        | *                              | *            |
| 0039 | Copper        | *        | *        | *        | *                              | 1.00E+02     |
| 0040 | Zinc          | *        | *        | *        | *                              | *            |
| 0041 | Phosphorus    | *        | *        | 2.00E+01 | *                              | *            |
| 0042 | Selenium      | *        | *        | 1.00E+01 | *                              | *            |
| 0043 | H2S           | *        | *        | 2.00E-01 | 2.00E-02                       | 4.20E+01     |
| 0044 | Cr(VI)        | 5.10E+02 | *        | 2.00E+02 | *                              | 3.20E+03     |
| 0045 | NH3           | *        | *        | 2.00E+01 | *                              | *            |
| 0046 | 1,3-Butadiene | 6.00E-01 | *        | 7.00E+02 | *                              | 2.20E+04     |
| 0047 | Xylenes       | *        | *        | *        | *                              | *            |
| 0048 | PAHS-w/o      | 3.90E+00 | 1.20E+01 | *        | *                              | *            |
| 0049 | Hexane        | *        | *        | 7.00E+03 | *                              | *            |

EMISSIONS DATA SOURCE: Emission rates loaded from database  
 CHEMICALS ADDED OR DELETED: none

| SOURCE MULTIPLIER=1 | CAS     | ABREV            | DEVT=104 | PRO=1 | STK=104 | NAME=VALERO REFINERY STACK 104 | EMS (lbs/yr)    |
|---------------------|---------|------------------|----------|-------|---------|--------------------------------|-----------------|
|                     | 50000   | Formaldehyde     |          | 1     | 0       | AVRG (lbs/yr)                  | MAX (lbs/hr)    |
|                     | 50328   | B[a]P            |          | 1     | 0       | 2342.496207                    | 0.267408243     |
|                     | 53703   | D[a,h]anthracen  |          | 1     | 0       | 0.000716018                    | 0.000000081737  |
|                     | 56553   | B[a]anthracene   |          | 1     | 0       | 0.000716018                    | 0.000000081737  |
|                     | 71432   | Benzene          |          | 1     | 0       | 39.49877813                    | 0.000000081737  |
|                     | 75070   | Acetaldehyde     |          | 1     | 0       | 298.3168356                    | 0.034054433     |
|                     | 85018   | Phenanthrene     |          | 1     | 0       | 0.021480537                    | 0.00000245212   |
|                     | 86737   | Fluorene         |          | 1     | 0       | 0.007160179                    | 0.0000000817372 |
|                     | 91203   | Naphthalene      |          | 1     | 0       | 4.050269385                    | 0.00046236      |
|                     | 91576   | 2MeNaphthalene   |          | 1     | 0       | 0.010597065                    | 0.00000120971   |
|                     | 100414  | Ethyl Benzene    |          | 1     | 0       | 100.7667503                    | 0.011503054     |
|                     | 108883  | Toluene          |          | 1     | 0       | 404.8991527                    | 0.046221364     |
|                     | 108907  | Chlorobenzn      |          | 1     | 0       | 5.077567983                    | 0.000579631     |
|                     | 108952  | Phenol           |          | 1     | 0       | 202.2788796                    | 0.023091196     |
|                     | 115071  | Propylene        |          | 1     | 0       | 89.72570225                    | 0.01024266      |
|                     | 120127  | Anthracene       |          | 1     | 0       | 0.000875187                    | 0.00000009907   |
|                     | 129000  | Pyrene           |          | 1     | 0       | 0.004868922                    | 0.00000555813   |
|                     | 191242  | B[g,h,i]perylene |          | 1     | 0       | 0.009308233                    | 0.00000106258   |
|                     | 192972  | B[e]pyrene       |          | 1     | 0       | 0.000498633                    | 0.00000056921   |
|                     | 193395  | In[1,2,3-cd]pyr  |          | 1     | 0       | 0.000716018                    | 0.000000081737  |
|                     | 198550  | Perylene         |          | 1     | 0       | 0.000716018                    | 0.000000081737  |
|                     | 205992  | B[b]fluoranthen  |          | 1     | 0       | 0.000716018                    | 0.000000081737  |
|                     | 206440  | Fluoranthene     |          | 1     | 0       | 0.004868922                    | 0.00000555813   |
|                     | 207089  | B[k]fluoranthen  |          | 1     | 0       | 0.000716018                    | 0.000000081737  |
|                     | 208968  | Acenaphthylene   |          | 1     | 0       | 0.000716018                    | 0.000000081737  |
|                     | 218019  | Chrysene         |          | 1     | 0       | 0.000716018                    | 0.000000081737  |
|                     | 7439921 | Lead             |          | 1     | 0       | 0.957674351                    | 0.000109324     |
|                     | 7439965 | Manganese        |          | 1     | 0       | 0.668651519                    | 0.0000763301    |
|                     | 7439976 | Mercury          |          | 1     | 0       | 0.440801534                    | 0.0000503198    |

File: C:\HARP\PROJECTS\2709\ValCogen1\2709 MAHI.txt 9/7/2011, 2:50:39PM

| CAS   | ABBREV           | FAC=2644 | DEV=104 | PRO=2      | STK=105     | NAME=VALERO REFINERY | STACK         | 105 | EMS (lbs/yr) |
|---|------------------|----------|---------|------------|-------------|----------------------|---------------|-----|--------------|
| SOURCE  | MULTIPLIER=1     |          |         |            | BG (ug/m^3) | AVRG (lbs/yr)        | MAX (lbs/hr)  |     |              |
| 7440020   | Nickel           |          |         | 1          | 0           | 1.309773847          | 0.000149518   |     |              |
| 7440224   | Silver           |          |         | 1          | 0           | 2.278154777          | 0.000260063   |     |              |
| 7440280   | Thallium         |          |         | 1          | 0           | 8.168632322          | 0.000932492   |     |              |
| 7440360   | Antimony         |          |         | 1          | 0           | 0.731275097          | 0.0000834789  |     |              |
| 7440382   | Arsenic          |          |         | 1          | 0           | 0.086305449          | 0.00000985222 |     |              |
| 7440393   | Barium           |          |         | 1          | 0           | 8.168632322          | 0.000932492   |     |              |
| 7440417   | Beryllium        |          |         | 1          | 0           | 0.012885452          | 0.00000147094 |     |              |
| 7440439   | Cadmium          |          |         | 1          | 0           | 0.031268092          | 0.00000356942 |     |              |
| 7440473   | Chromium         |          |         | 1          | 0           | 0.308831789          | 0.0000352548  |     |              |
| 7440508   | Copper           |          |         | 1          | 0           | 0.631161925          | 0.0000720504  |     |              |
| 7440666   | Zinc             |          |         | 1          | 0           | 20.87817497          | 0.002383353   |     |              |
| 7723140   | Phosphorus       |          |         | 1          | 0           | 0.907485964          | 0.000103594   |     |              |
| 7782492   | Selenium         |          |         | 1          | 0           | 0.310525129          | 0.0000354481  |     |              |
| 7783064   | H2S              |          |         | 1          | 0           | 307.3597102          | 0.035086725   |     |              |
| 18540299  | Cr(VI)           |          |         | 1          | 0           | 0.104511242          | 0.0000119305  |     |              |
| 7664417   | NH3              |          |         | 1          | 0           | 24297.69368          | 2.773709324   |     |              |
| 106990  | 1,3-Butadiene    |          |         | 1          | 0           | 1.292461557          | 0.0000976026  |     |              |
| 1330207   | Xylenes          |          |         | 1          | 0           | 192.2499764          | 0.0000333978  |     |              |
| 1151  | PAHs-w/o         |          |         | 1          | 0           | 2.702687264          | 0.033057385   | *   |              |
| 110543  | Hexane           |          |         | 1          | 0           |                      |               | *   |              |
| EMISSIONS FOR FACILITY FAC=2644 DEV=104 PRO=2 STK=105 NAME=VALERO REFINERY STACK 105 EMS (lbs/yr) |                  |          |         |            |             |                      |               |     |              |
| CAS   | ABBREV           |          |         | MULTIPLIER | BG (ug/m^3) | AVRG (lbs/yr)        | MAX (lbs/hr)  |     |              |
| 50000   | Formaldehyde     |          |         | 1          | 0           |                      |               | *   |              |
| 50328   | B[a]P            |          |         | 1          | 0           |                      |               | *   |              |
| 53703   | D[a,h]anthracen  |          |         | 1          | 0           |                      |               | *   |              |
| 56553   | B[a]anthracene   |          |         | 1          | 0           |                      |               | *   |              |
| 71432   | Benzene          |          |         | 1          | 0           |                      |               | *   |              |
| 75070   | Acetaldehyde     |          |         | 1          | 0           |                      |               | *   |              |
| 85018   | Phenanthrene     |          |         | 1          | 0           |                      |               | *   |              |
| 86737   | Fluorene         |          |         | 1          | 0           |                      |               | *   |              |
| 91203   | Naphthalene      |          |         | 1          | 0           |                      |               | *   |              |
| 91576   | 2MeNaphthalene   |          |         | 1          | 0           |                      |               | *   |              |
| 100414  | Ethyl Benzene    |          |         | 1          | 0           |                      |               | *   |              |
| 108883  | Toluene          |          |         | 1          | 0           |                      |               | *   |              |
| 108907  | Chlorobenzn      |          |         | 1          | 0           |                      |               | *   |              |
| 108952  | Phenol           |          |         | 1          | 0           |                      |               | *   |              |
| 115071  | Propylene        |          |         | 1          | 0           | 125.34               | 0.014308      | *   |              |
| 120127  | Anthracene       |          |         | 1          | 0           |                      |               | *   |              |
| 129000  | Pyrene           |          |         | 1          | 0           |                      |               | *   |              |
| 191242  | B[g,h,i]perylene |          |         | 1          | 0           |                      |               | *   |              |
| 192972  | Be]pyrene        |          |         | 1          | 0           |                      |               | *   |              |
| 193395  | Inf[1,2,3-cd]pyr |          |         | 1          | 0           |                      |               | *   |              |
| 198550  | Perylene         |          |         | 1          | 0           |                      |               | *   |              |
| 205992  | B[b]fluoranthen  |          |         | 1          | 0           |                      |               | *   |              |
| 206440  | Fluoranthene     |          |         | 1          | 0           |                      |               | *   |              |
| 207089  | B[k]fluoranthen  |          |         | 1          | 0           |                      |               | *   |              |
| 208968  | Acenaphthylene   |          |         | 1          | 0           |                      |               | *   |              |
| 218019  | Chrysene         |          |         | 1          | 0           |                      |               | *   |              |
| 7439921   | Lead             |          |         | 1          | 0           |                      |               | *   |              |
| 7439965   | Manganese        |          |         | 1          | 0           |                      |               | *   |              |
| 7439976   | Mercury          |          |         | 1          | 0           |                      |               | *   |              |
| 7440020   | Nickel           |          |         | 1          | 0           |                      |               | *   |              |
| 7440224   | Silver           |          |         | 1          | 0           |                      |               | *   |              |
| 7440280   | Thallium         |          |         | 1          | 0           |                      |               | *   |              |



| CHEM                   | CV       | CNS           | BONE     | DEVEL    | ENDO     | EYE      | GILV     | IMMUN    | KIDN     | REPRO     | RESP     | SKIN     | BLOOD    | MAX      | UTIME |
|------------------------|----------|---------------|----------|----------|----------|----------|----------|----------|----------|-----------|----------|----------|----------|----------|-------|
| 7440360                |          | Antimony      |          |          | 1        |          | 0        |          | *        | *         |          |          |          |          |       |
| 7440382                |          | Arsenic       |          |          | 1        |          | 0        |          | *        | *         |          |          |          |          |       |
| 7440393                |          | Barium        |          |          | 1        |          | 0        |          | *        | *         |          |          |          |          |       |
| 7440417                |          | Beryllium     |          |          | 1        |          | 0        |          | *        | *         |          |          |          |          |       |
| 7440439                |          | Cadmium       |          |          | 1        |          | 0        |          | *        | *         |          |          |          |          |       |
| 7440473                |          | Chromium      |          |          | 1        |          | 0        |          | *        | *         |          |          |          |          |       |
| 7440508                |          | Copper        |          |          | 1        |          | 0        |          | *        | *         |          |          |          |          |       |
| 7440666                |          | Zinc          |          |          | 1        |          | 0        |          | *        | *         |          |          |          |          |       |
| 7723140                |          | Phosphorus    |          |          | 1        |          | 0        |          | *        | *         |          |          |          |          |       |
| 7782492                |          | Selenium      |          |          | 1        |          | 0        |          | *        | *         |          |          |          |          |       |
| 7783064                |          | H2S           |          |          | 1        |          | 0        | 0.45     |          | 0.0000513 |          |          |          |          |       |
| 18540299               |          | Cr(VI)        |          |          | 1        |          | 0        |          | *        | *         |          |          |          |          |       |
| 7664417                |          | NH3           |          |          | 1        |          | 0        | 1124     |          | 0.128311  |          |          |          |          |       |
| 106990                 |          | 1,3-Butadiene |          |          | 1        |          | 0        |          | *        | *         |          |          |          |          |       |
| 1330207                |          | Xylenes       |          |          | 1        |          | 0        |          | *        | *         |          |          |          |          |       |
| 1151                   |          | PAHS-w/o      |          |          | 1        |          | 0        |          | *        | *         |          |          |          |          |       |
| 110543                 |          | Hexane        |          |          | 1        |          | 0        | 20.44    |          | 0.002334  |          |          |          |          |       |
| ACUTE HI REPORT        |          |               |          |          |          |          |          |          |          |           |          |          |          |          |       |
| ACUTE HI, RECEPTOR 634 |          |               |          |          |          |          |          |          |          |           |          |          |          |          |       |
| CHEM                   | CV       | CNS           | BONE     | DEVEL    | ENDO     | EYE      | GILV     | IMMUN    | KIDN     | REPRO     | RESP     | SKIN     | BLOOD    | MAX      | UTIME |
| UTMWN                  |          |               |          |          |          |          |          |          |          |           |          |          |          |          |       |
| 0001                   | 0.00E+00 | 0.00E+00      | 0.00E+00 | 0.00E+00 | 0.00E+00 | 9.66E-03 | 0.00E+00 | 0.00E+00 | 0.00E+00 | 0.00E+00  | 0.00E+00 | 0.00E+00 | 0.00E+00 | 9.66E-03 |       |
| 0002                   | 0.00E+00 | 0.00E+00      | 0.00E+00 | 0.00E+00 | 0.00E+00 | 0.00E+00 | 0.00E+00 | 0.00E+00 | 0.00E+00 | 0.00E+00  | 0.00E+00 | 0.00E+00 | 0.00E+00 | 0.00E+00 |       |
| 0003                   | 0.00E+00 | 0.00E+00      | 0.00E+00 | 0.00E+00 | 0.00E+00 | 0.00E+00 | 0.00E+00 | 0.00E+00 | 0.00E+00 | 0.00E+00  | 0.00E+00 | 0.00E+00 | 0.00E+00 | 0.00E+00 |       |
| 0004                   | 0.00E+00 | 0.00E+00      | 0.00E+00 | 0.00E+00 | 0.00E+00 | 0.00E+00 | 0.00E+00 | 0.00E+00 | 0.00E+00 | 0.00E+00  | 0.00E+00 | 0.00E+00 | 0.00E+00 | 0.00E+00 |       |
| 0005                   | 0.00E+00 | 0.00E+00      | 0.00E+00 | 0.00E+00 | 0.00E+00 | 0.00E+00 | 0.00E+00 | 0.00E+00 | 0.00E+00 | 0.00E+00  | 0.00E+00 | 0.00E+00 | 0.00E+00 | 0.00E+00 |       |
| 0006                   | 0.00E+00 | 0.00E+00      | 0.00E+00 | 0.00E+00 | 0.00E+00 | 1.44E-04 | 0.00E+00 | 0.00E+00 | 0.00E+00 | 0.00E+00  | 0.00E+00 | 0.00E+00 | 0.00E+00 | 1.44E-04 |       |
| 0007                   | 0.00E+00 | 0.00E+00      | 0.00E+00 | 0.00E+00 | 0.00E+00 | 0.00E+00 | 0.00E+00 | 0.00E+00 | 0.00E+00 | 0.00E+00  | 0.00E+00 | 0.00E+00 | 0.00E+00 | 0.00E+00 |       |
| 0008                   | 0.00E+00 | 0.00E+00      | 0.00E+00 | 0.00E+00 | 0.00E+00 | 0.00E+00 | 0.00E+00 | 0.00E+00 | 0.00E+00 | 0.00E+00  | 0.00E+00 | 0.00E+00 | 0.00E+00 | 0.00E+00 |       |
| 0009                   | 0.00E+00 | 0.00E+00      | 0.00E+00 | 0.00E+00 | 0.00E+00 | 0.00E+00 | 0.00E+00 | 0.00E+00 | 0.00E+00 | 0.00E+00  | 0.00E+00 | 0.00E+00 | 0.00E+00 | 0.00E+00 |       |
| 0010                   | 0.00E+00 | 0.00E+00      | 0.00E+00 | 0.00E+00 | 0.00E+00 | 0.00E+00 | 0.00E+00 | 0.00E+00 | 0.00E+00 | 0.00E+00  | 0.00E+00 | 0.00E+00 | 0.00E+00 | 0.00E+00 |       |
| 0011                   | 0.00E+00 | 0.00E+00      | 0.00E+00 | 0.00E+00 | 0.00E+00 | 0.00E+00 | 0.00E+00 | 0.00E+00 | 0.00E+00 | 0.00E+00  | 0.00E+00 | 0.00E+00 | 0.00E+00 | 0.00E+00 |       |
| 0012                   | 0.00E+00 | 2.48E-06      | 0.00E+00 | 0.00E+00 | 0.00E+00 | 2.48E-06 | 0.00E+00 | 0.00E+00 | 0.00E+00 | 0.00E+00  | 0.00E+00 | 0.00E+00 | 0.00E+00 | 2.48E-06 |       |
| 0013                   | 0.00E+00 | 0.00E+00      | 0.00E+00 | 0.00E+00 | 0.00E+00 | 0.00E+00 | 0.00E+00 | 0.00E+00 | 0.00E+00 | 0.00E+00  | 0.00E+00 | 0.00E+00 | 0.00E+00 | 0.00E+00 |       |
| 0014                   | 0.00E+00 | 0.00E+00      | 0.00E+00 | 0.00E+00 | 0.00E+00 | 7.91E-06 | 0.00E+00 | 0.00E+00 | 0.00E+00 | 0.00E+00  | 0.00E+00 | 0.00E+00 | 0.00E+00 | 7.91E-06 |       |
| 0015                   | 0.00E+00 | 0.00E+00      | 0.00E+00 | 0.00E+00 | 0.00E+00 | 0.00E+00 | 0.00E+00 | 0.00E+00 | 0.00E+00 | 0.00E+00  | 0.00E+00 | 0.00E+00 | 0.00E+00 | 0.00E+00 |       |
| 0016                   | 0.00E+00 | 0.00E+00      | 0.00E+00 | 0.00E+00 | 0.00E+00 | 0.00E+00 | 0.00E+00 | 0.00E+00 | 0.00E+00 | 0.00E+00  | 0.00E+00 | 0.00E+00 | 0.00E+00 | 0.00E+00 |       |
| 0017                   | 0.00E+00 | 0.00E+00      | 0.00E+00 | 0.00E+00 | 0.00E+00 | 0.00E+00 | 0.00E+00 | 0.00E+00 | 0.00E+00 | 0.00E+00  | 0.00E+00 | 0.00E+00 | 0.00E+00 | 0.00E+00 |       |
| 0018                   | 0.00E+00 | 0.00E+00      | 0.00E+00 | 0.00E+00 | 0.00E+00 | 0.00E+00 | 0.00E+00 | 0.00E+00 | 0.00E+00 | 0.00E+00  | 0.00E+00 | 0.00E+00 | 0.00E+00 | 0.00E+00 |       |
| 0019                   | 0.00E+00 | 0.00E+00      | 0.00E+00 | 0.00E+00 | 0.00E+00 | 0.00E+00 | 0.00E+00 | 0.00E+00 | 0.00E+00 | 0.00E+00  | 0.00E+00 | 0.00E+00 | 0.00E+00 | 0.00E+00 |       |
| 0020                   | 0.00E+00 | 0.00E+00      | 0.00E+00 | 0.00E+00 | 0.00E+00 | 0.00E+00 | 0.00E+00 | 0.00E+00 | 0.00E+00 | 0.00E+00  | 0.00E+00 | 0.00E+00 | 0.00E+00 | 0.00E+00 |       |
| 0021                   | 0.00E+00 | 0.00E+00      | 0.00E+00 | 0.00E+00 | 0.00E+00 | 0.00E+00 | 0.00E+00 | 0.00E+00 | 0.00E+00 | 0.00E+00  | 0.00E+00 | 0.00E+00 | 0.00E+00 | 0.00E+00 |       |
| 0022                   | 0.00E+00 | 0.00E+00      | 0.00E+00 | 0.00E+00 | 0.00E+00 | 0.00E+00 | 0.00E+00 | 0.00E+00 | 0.00E+00 | 0.00E+00  | 0.00E+00 | 0.00E+00 | 0.00E+00 | 0.00E+00 |       |
| 0023                   | 0.00E+00 | 0.00E+00      | 0.00E+00 | 0.00E+00 | 0.00E+00 | 0.00E+00 | 0.00E+00 | 0.00E+00 | 0.00E+00 | 0.00E+00  | 0.00E+00 | 0.00E+00 | 0.00E+00 | 0.00E+00 |       |
| 0024                   | 0.00E+00 | 0.00E+00      | 0.00E+00 | 0.00E+00 | 0.00E+00 | 0.00E+00 | 0.00E+00 | 0.00E+00 | 0.00E+00 | 0.00E+00  | 0.00E+00 | 0.00E+00 | 0.00E+00 | 0.00E+00 |       |
| 0025                   | 0.00E+00 | 0.00E+00      | 0.00E+00 | 0.00E+00 | 0.00E+00 | 0.00E+00 | 0.00E+00 | 0.00E+00 | 0.00E+00 | 0.00E+00  | 0.00E+00 | 0.00E+00 | 0.00E+00 | 0.00E+00 |       |
| 0026                   | 0.00E+00 | 0.00E+00      | 0.00E+00 | 0.00E+00 | 0.00E+00 | 0.00E+00 | 0.00E+00 | 0.00E+00 | 0.00E+00 | 0.00E+00  | 0.00E+00 | 0.00E+00 | 0.00E+00 | 0.00E+00 |       |
| 0027                   | 0.00E+00 | 0.00E+00      | 0.00E+00 | 0.00E+00 | 0.00E+00 | 0.00E+00 | 0.00E+00 | 0.00E+00 | 0.00E+00 | 0.00E+00  | 0.00E+00 | 0.00E+00 | 0.00E+00 | 0.00E+00 |       |
| 0028                   | 0.00E+00 | 0.00E+00      | 0.00E+00 | 0.00E+00 | 0.00E+00 | 0.00E+00 | 0.00E+00 | 0.00E+00 | 0.00E+00 | 0.00E+00  | 0.00E+00 | 0.00E+00 | 0.00E+00 | 0.00E+00 |       |
| 0029                   | 0.00E+00 | 1.67E-04      | 0.00E+00 | 0.00E+00 | 0.00E+00 | 1.67E-04 | 0.00E+00 | 0.00E+00 | 0.00E+00 | 0.00E+00  | 0.00E+00 | 0.00E+00 | 0.00E+00 | 1.67E-04 |       |
| 0030                   | 0.00E+00 | 0.00E+00      | 0.00E+00 | 0.00E+00 | 0.00E+00 | 0.00E+00 | 0.00E+00 | 0.00E+00 | 0.00E+00 | 0.00E+00  | 0.00E+00 | 0.00E+00 | 0.00E+00 | 0.00E+00 |       |
| 0031                   | 0.00E+00 | 0.00E+00      | 0.00E+00 | 0.00E+00 | 0.00E+00 | 0.00E+00 | 0.00E+00 | 0.00E+00 | 0.00E+00 | 0.00E+00  | 0.00E+00 | 0.00E+00 | 0.00E+00 | 0.00E+00 |       |
| 0032                   | 0.00E+00 | 0.00E+00      | 0.00E+00 | 0.00E+00 | 0.00E+00 | 0.00E+00 | 0.00E+00 | 0.00E+00 | 0.00E+00 | 0.00E+00  | 0.00E+00 | 0.00E+00 | 0.00E+00 | 0.00E+00 |       |
| 0033                   | 0.00E+00 | 0.00E+00      | 0.00E+00 | 0.00E+00 | 0.00E+00 | 0.00E+00 | 0.00E+00 | 0.00E+00 | 0.00E+00 | 0.00E+00  | 0.00E+00 | 0.00E+00 | 0.00E+00 | 0.00E+00 |       |

