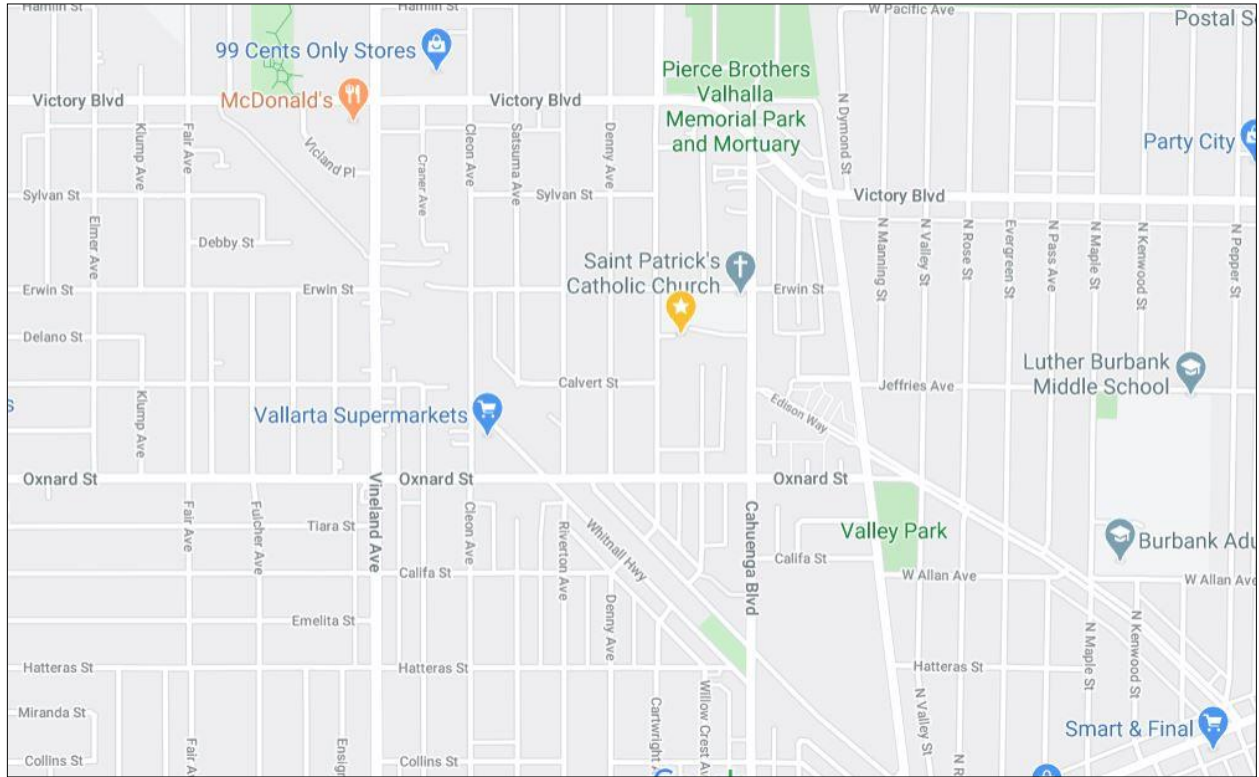


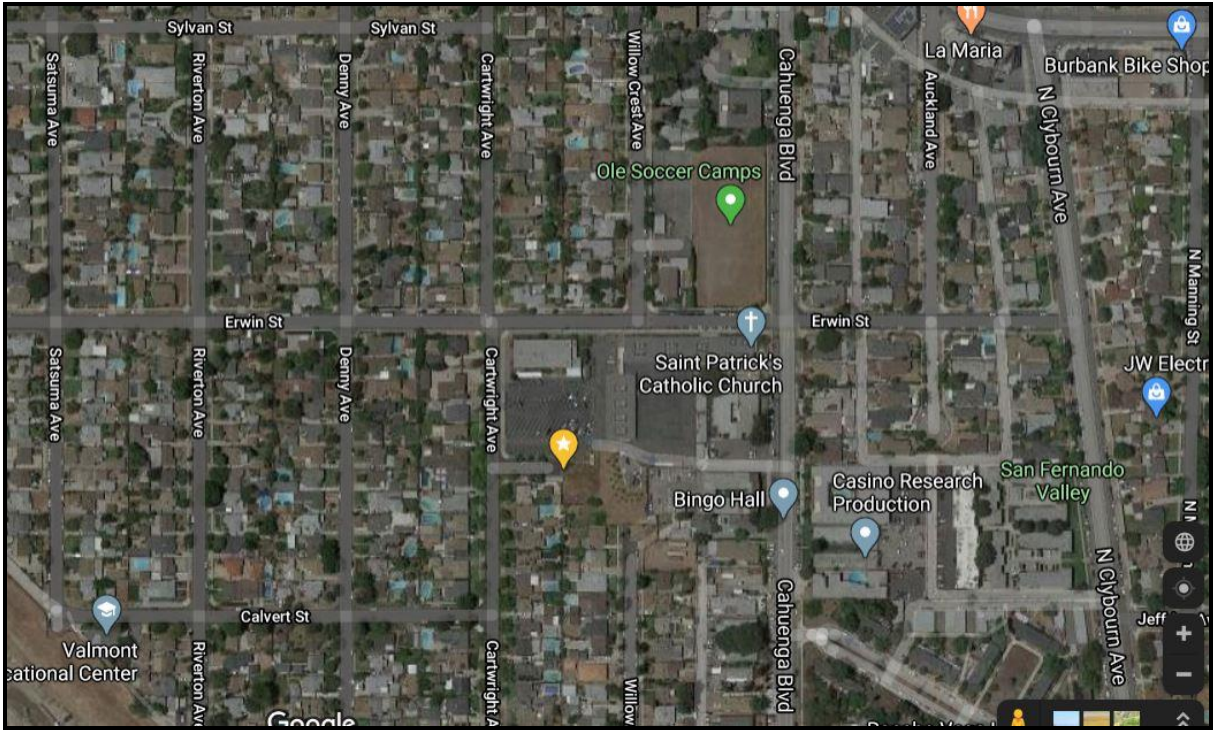
South Coast AQMD Site Survey Report for North Hollywood

Last updated: May 12, 2023



AQS ID	ARB Number	Site Start Date	Reporting Agency and Agency Code
060374010	70200	01/01/2020	South Coast AQMD (0972)

Site Address	County	Air Basin	Latitude	Longitude	Elevation
10659 W. Delano Street North Hollywood, CA 91606	Los Angeles	South Coast	34.181977	-118.363036	198



Detailed Site Information

Local site name	North Hollywood		
AQS ID	060374010		
GPS coordinates (decimal degrees)	Latitude 34.181977, Longitude -118.363036		
Street Address	10659 W. Delano Street, North Hollywood CA 91606		
County	Los Angeles		
Distance to roadways (meters)	25		
Traffic count (AADT, year)	<1000 (Cartwright at Calvert)		
Groundcover (e.g. asphalt, dirt, sand)	Gravel		
Representative statistical area name (i.e. MSA, CBSA, other)	31080-Los Angeles, Long Beach, Anaheim MSA		
Pollutant, POC	Nitrogen Dioxide, 1	Ozone, 1	
Primary / QA Collocated / Other	N/A	N/A	
Parameter code	42602	44201	
Basic monitoring objective(s)	NAAQS	NAAQS	
Site type(s)	Population Exposure	Population Exposure	
Monitor (type)	SLAMS	SLAMS	
Network affiliation	N/A	N/A	
Instrument manufacturer and model	Teledyne T200	Teledyne T400	
Method code	099	087	
FRM/FEM/ARM/ other	FRM	FRM	
Collecting Agency	South Coast AQMD	South Coast AQMD	
Analytical Lab (i.e., weigh lab, toxics lab, other)	N/A	N/A	
Reporting Agency	South Coast AQMD	South Coast AQMD	
Spatial scale (e.g. micro, neighborhood)	Neighborhood	Neighborhood	
Monitoring start date (MM/DD/YYYY)	01/01/20	01/01/20	
Current sampling frequency (e.g.1:3, continuous)	1:1	1:1	
Calculated sampling frequency (e.g. 1:3/1:1)	N/A	N/A	
Sampling season (MM/DD-MM/DD)	01/01-12/31	01/01-12/31	
Probe height (meters)	4.5	4.5	
Distance from supporting structure (meters)	1.9 *The roof itself is the supporting structure.	1.9 *The roof itself is the supporting structure.	
Distance from obstructions on roof (meters)	N/A	N/A	

Distance from obstructions not on roof (meters)	N/A	N/A		
Distance from trees (meters)	N/A	N/A		
Distance to furnace or incinerator flue (meters)	N/A	N/A		
Distance between collocated monitors (meters)	N/A	N/A		
Unrestricted airflow (degrees)	360°	360°		
Probe material for reactive gases (e.g. Pyrex, stainless steel, Teflon)	Teflon	Teflon		
Residence time for reactive gases (seconds)	12.2	11.3		
Will there be changes within the next 18 months? (Y/N)	No	No		
Is it suitable for comparison against the annual PM2.5? (Y/N)	N/A	N/A		
Frequency of flow rate verification for manual PM samplers	N/A	N/A		
Frequency of flow rate verification for automated PM analyzers	N/A	N/A		
Frequency of one-point QC check for gaseous instruments	Nightly	Nightly		
Last Annual Performance Evaluation for gaseous parameters (MM/DD/YYYY)	05/12/2022	05/12/2022		
Last two semi-annual flow rate audits for PM monitors (MM/DD/YYYY, MM/DD/YYYY)	N/A	N/A		

Pollutant, POC	Continuous PM2.5, 3	WS & D, 1/1	RH/T, 1/1	
Primary / QA Collocated / Other	Other	N/A	N/A	
Parameter code	88502	61101/61102	62201/62101	
Basic monitoring objective(s)	General Public Info	Research	Research	
Site type(s)	Population Exposure	Meteorological	Meteorological	
Monitor (type)	Other	SLAMS	SLAMS	
Network affiliation	N/A	N/A	N/A	
Instrument manufacturer and model	Met One BAM 1020	RM Young 05305V	Rotronic HC2-S3	
Method code	731	065/065	063/063	
FRM/FEM/ARM/ other	Non-FEM	N/A	N/A	
Collecting Agency	South Coast AQMD	South Coast AQMD	South Coast AQMD	
Analytical Lab (i.e., weigh lab, toxics lab, other)	N/A	N/A	N/A	
Reporting Agency	South Coast AQMD	South Coast AQMD	South Coast AQMD	
Spatial scale (e.g. micro, neighborhood)	Neighborhood	Neighborhood	Neighborhood	
Monitoring start date (MM/DD/YYYY)	01/01/20	01/01/20	01/01/20	
Current sampling frequency (e.g.1:3, continuous)	1:1	Continuous	Continuous	
Calculated sampling frequency (e.g. 1:3/1:1)	N/A	1:1	1:1	
Sampling season (MM/DD-MM/DD)	01/01-12/31	01/01-12/31	01/01-12/31	
Probe height (meters)	4.4	10	9.0	
Distance from supporting structure (meters)	1.8 *Roof itself is supporting structure.	10	9.0	
Distance from obstructions on roof (meters)	N/A	N/A	N/A	
Distance from obstructions not on roof (meters)	N/A	N/A	N/A	
Distance from trees (meters)	N/A	N/A	N/A	
Distance to furnace or incinerator flue (meters)	N/A	N/A	N/A	
Distance between collocated monitors (meters)	N/A	N/A	N/A	
Unrestricted airflow (degrees)	360°	360°	360°	

Probe material for reactive gases (e.g. Pyrex, stainless steel, Teflon)	N/A	N/A	N/A	
Residence time for reactive gases (seconds)	N/A	N/A	N/A	
Will there be changes within the next 18 months? (Y/N)	N/A	No	No	
Is it suitable for comparison against the annual PM2.5? (Y/N)	N/A	Yes	N/A	
Frequency of flow rate verification for manual PM samplers	N/A	N/A	N/A	
Frequency of flow rate verification for automated PM analyzers	Monthly	N/A	N/A	
Frequency of one-point QC check for gaseous instruments	N/A	N/A	N/A	
Last Annual Performance Evaluation for gaseous parameters (MM/DD/YYYY)	N/A	N/A	N/A	
Last two semi-annual flow rate audits for PM monitors (MM/DD/YYYY, MM/DD/YYYY)	03/01/2022 08/02/2022	N/A	N/A	

**North Hollywood
Site Photos**



Looking North from the probe.



Looking East from the probe.



Looking South from the probe.



Looking West from the probe.

**North Hollywood
Site Photos (Cont.)**

Photo is Unavailable

Looking at the probe from the North.

Photo is Unavailable

Looking at the probe from the East.



Looking at the probe from the South.



Looking at the probe from the West.