

CH4 (ppm)

04/11/16 (11:35am to 12:20pm)

Latitude
34.320
34.315
34.310
34.305

SS-1

SS-25

CH4 (ppm)

40

30

20

10

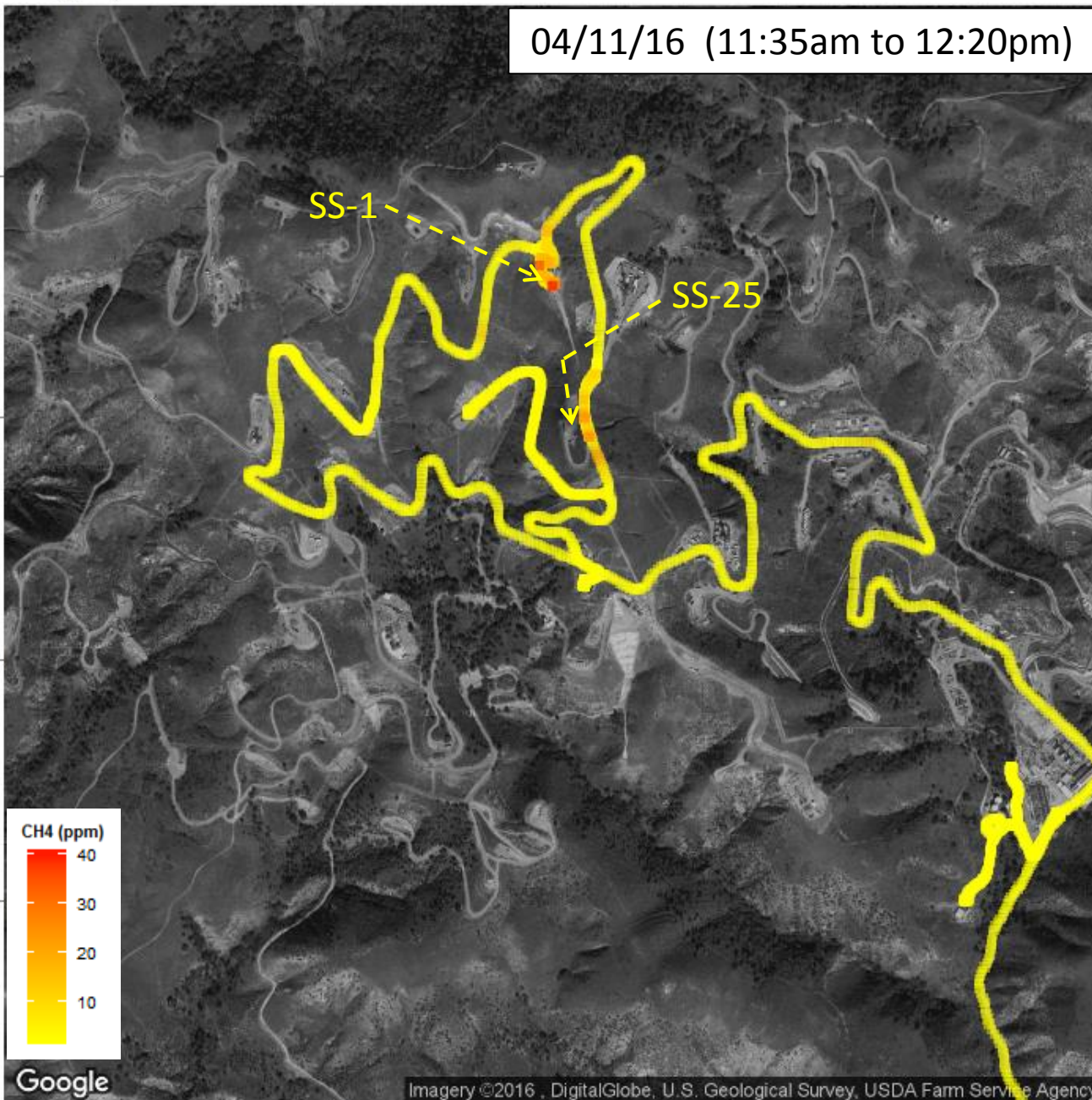
Google

Imagery ©2016, DigitalGlobe, U.S. Geological Survey, USDA Farm Service Agency

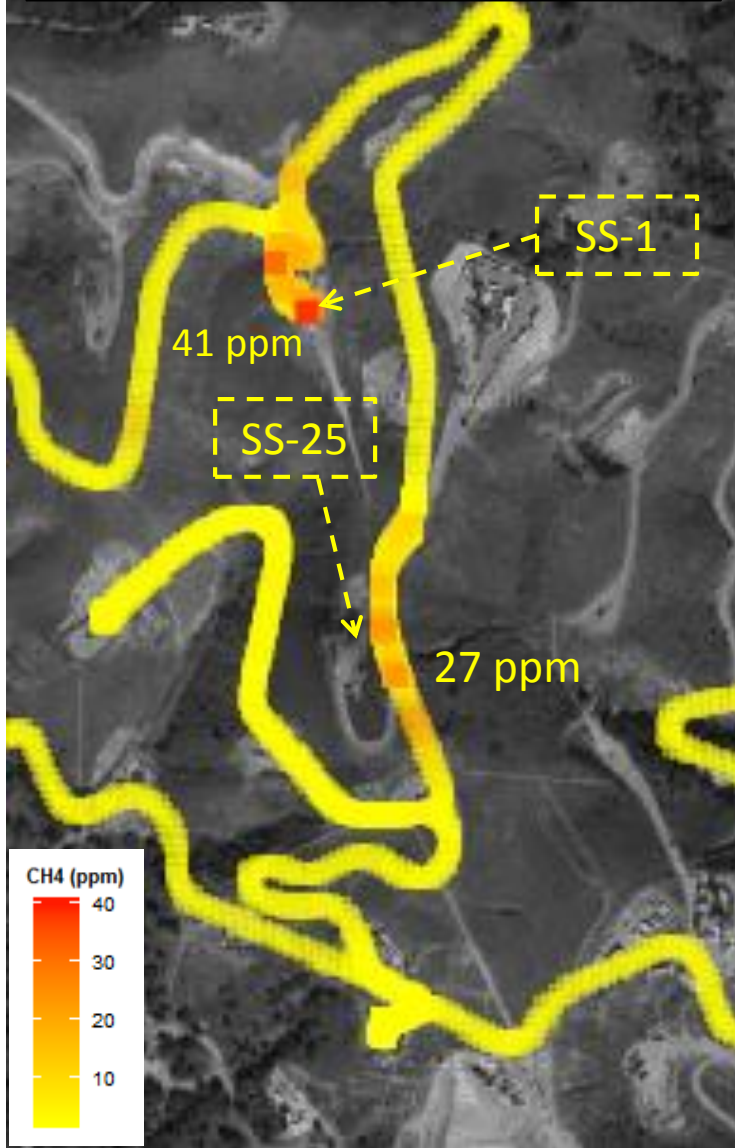
-118.57

-118.56

Longitude



04/11/16 (11:35am to 12:20pm)



- Methane concentrations ~150-200 ft E of SS-25 are still elevated (up to 27 ppm)
- Increased methane levels (up to 41 ppm) were also measured near well SS-1, in close proximity to a new power pole that was installed by SoCalGas a few weeks ago
- SCAQMD inspectors used a portable TVA-1000 monitor to confirm these findings and complement the LICOR data
- Videos were taken with FLIR cameras to identify the presence of natural gas