

# Dust Control In The Coachella Valley



**SOUTH COAST  
AIR QUALITY MANAGEMENT DISTRICT**

**COACHELLA VALLEY  
ASSOCIATION OF GOVERNMENTS**

**LOCAL GOVERNMENTS**

*Working  
Together For  
Healthful Air*



# Dust Control in the Coachella Valley

---



**Key Terms**



**Regulatory  
Background**



**MOU**



**Ordinance  
Requirements**



**CV Dust  
Control  
Handbook**



**South Coast  
AQMD  
Regulations**  
Rule 403, 403.1,  
401, 402, 201, 203,  
& PERP

# Key Terms

- **Fugitive Dust** - Any solid particulate matter that becomes airborne, other than that emitted from an exhaust stack, directly or indirectly as a result of the activities of any person
- **Disturbed Surface Area**- any portion of the earth/soil that has been unstabilized or disturbed from it's natural state increasing the potential for fugitive dust emissions.
- **PM10** - Particulate matter < 10 microns
- **SIP** - State Implementation Plan, an enforceable plan developed at the state and local level that explains how the area will comply with the NAAQS according to the Clean Air Act.
- **Opacity**- A way to describe the density of a plume or smoke; degree to which visibility of a background viewed through the plume is obscured.
- **MOU** – Memorandum of Understanding, agreement between city and county governments and the South Coast AQMD.
- **CVBACM** – Coachella Valley Best Available Control Methods to minimize dust emissions. (See CV Dust Control Handbook)

# Regulatory Background

- Coachella Valley Air Basin failed to meet the required PM10 NAAQS (National Ambient Air Quality Standards) by 2001 ( $50 \mu\text{g}/\text{m}^3$  –one year avg or  $150 \mu\text{g}/\text{m}^3$  -24 hr avg).
- South Coast AQMD Prepared and adopted 2002 CVSIP (Coachella Valley State Implementation Plan) to request one-time EPA 5 year extension.
- CVSIP requires implementation of CVBACM for all fugitive dust sources to qualify for attainment date extension.
- May 6, 2003, final CVSIP approved.
- October 2009 South Coast AQMD requests redesignation to Attainment status for Coachella Valley PM10 NAAQS.
- March 2010 CARB approved redesignation request, EPA approval still pending as of January 2011.



In the Coachella Valley, PM10 is primarily comprised of windblown dust from land development activities, agricultural tilling, unpaved roads and dirt on paved roadways that is suspended in the air when vehicles drive over it.

---

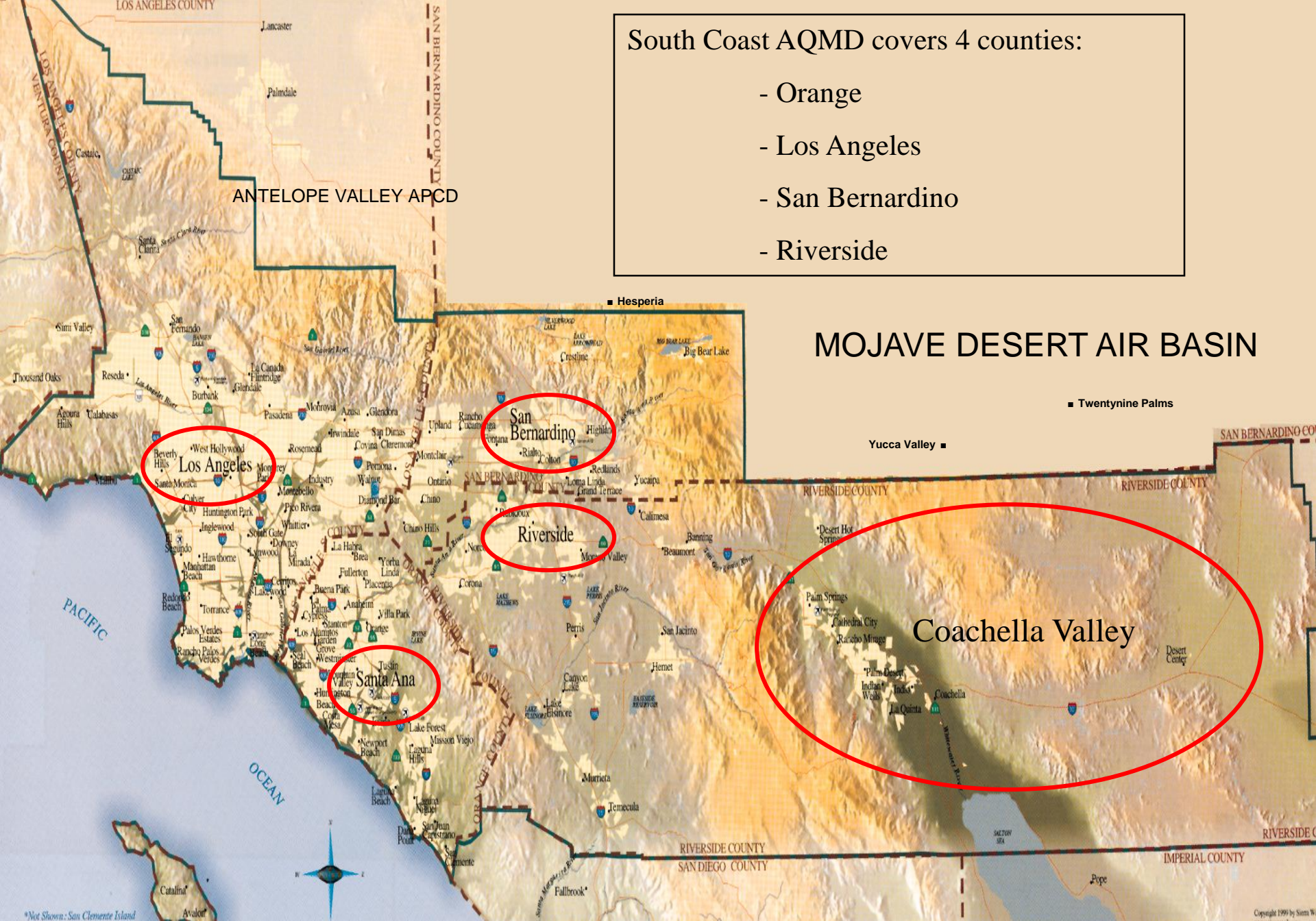


South Coast AQMD covers 4 counties:

- Orange
- Los Angeles
- San Bernardino
- Riverside

MOJAVE DESERT AIR BASIN

Coachella Valley



\*Not Shown: San Clemente Island

## Applicability of Dust Rules

---

The **ordinance requirements** apply to all dust emission sources within the Coachella Valley.

---

**Rule 403** applies to all dust emission sources within the South Coast AQMD jurisdiction.

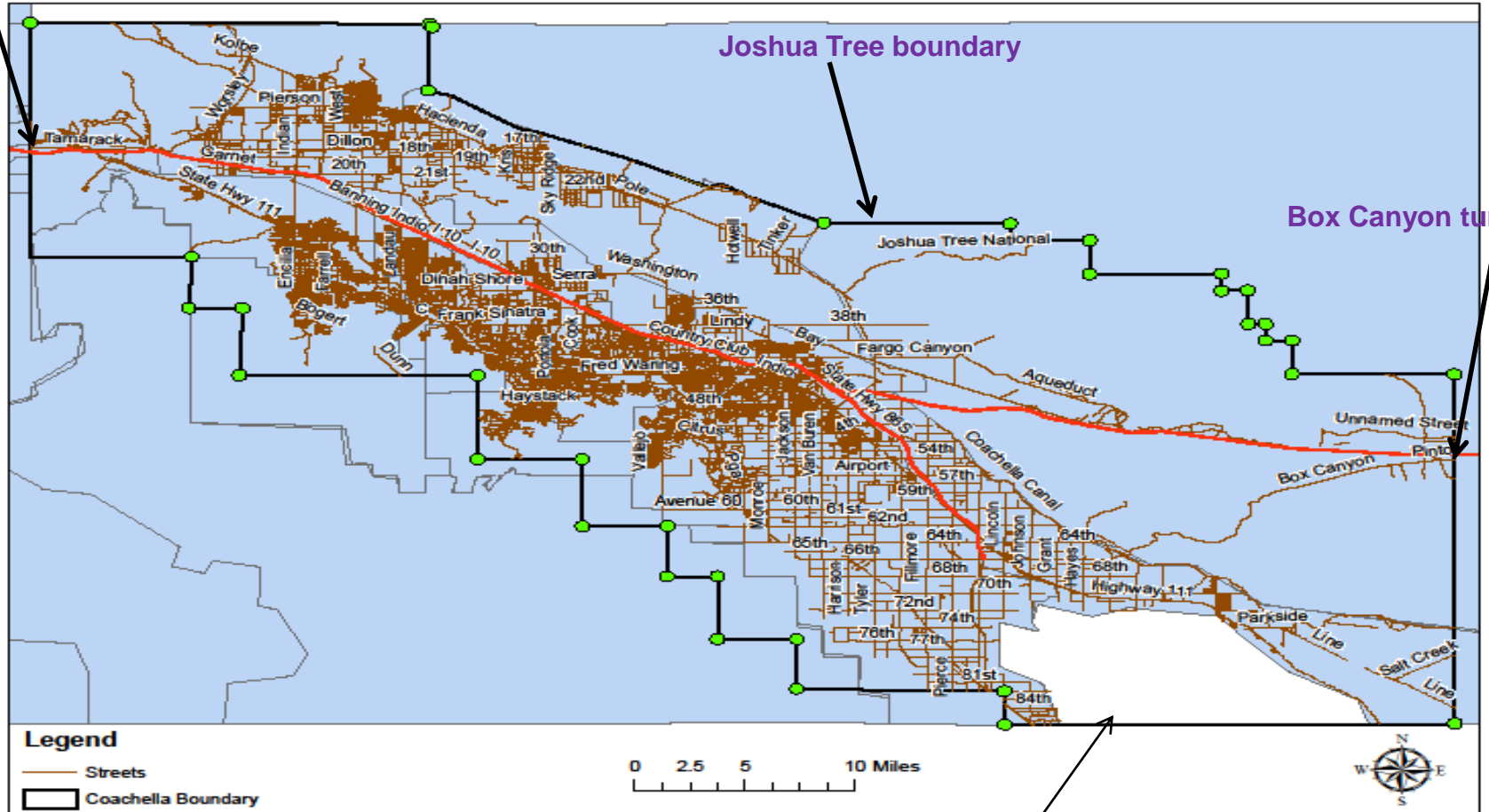
---

**Rule 403.1** applies to all dust emission sources within the Coachella Valley.

# Definition of Coachella Valley

Whitewater area

Coachella Valley Boundary and Location of the City of Desert Center



Joshua Tree boundary

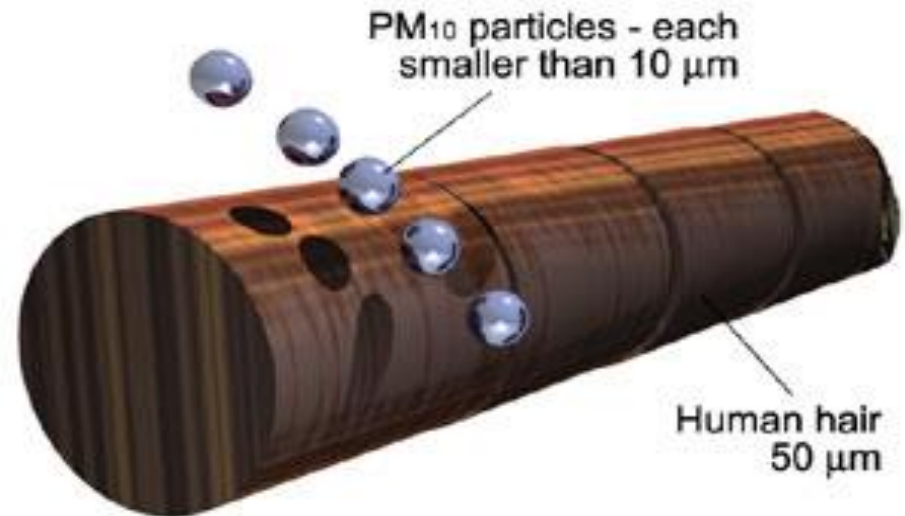
Box Canyon turn-off

Mecca/North Shore area

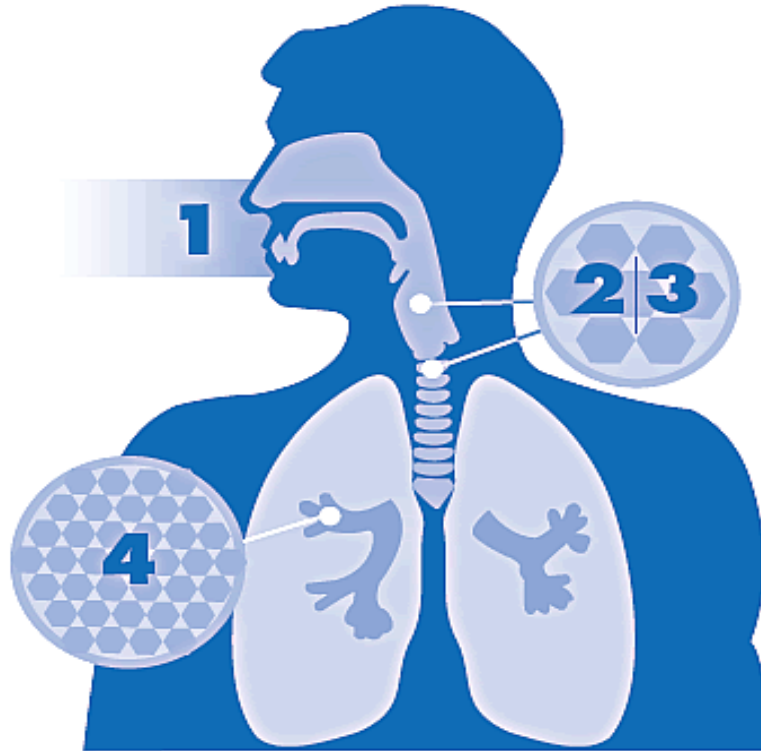


# What is PM10 and its Health Effects?

- Fine particulate matter less than 10 microns in diameter (has capacity to travel deep into lungs)
  - *1/5 the diameter of a human hair*
- Associated with increased rates of illness and death
  - *Small particles can by-pass the body's protective measures and lodge deep in the lungs.*
- High-risk groups:
  - Children
  - Elderly
  - People with respiratory disease



## How Particulate Matter Enters Our Body

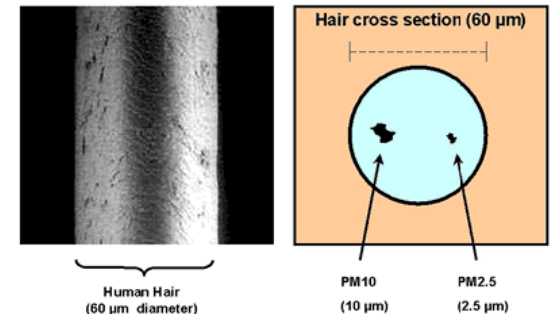


- 1** Particulate matter enters our respiratory (lung) system through the nose and throat.
- 2 | 3** The larger particulate matter (PM<sub>10</sub>) is eliminated through coughing, sneezing and swallowing.
- 4** PM<sub>2.5</sub> can penetrate deep into the lungs. It can travel all the way to the alveoli, causing lung and heart problems, and delivering harmful chemicals to the blood system.

➤ The smaller the particulate matter the farther it can go into your lungs and cause problems...

➤ We cannot see particulate matter...but can feel it when breathing it in...

### HOW SMALL IS PM?



# Local Dust Control is Essential...

## ➤ To reduce health risks

### – Sensitive receptors

- Children
- Elderly people
- People with respiratory ailments



## ➤ To reduce economic risks

- Loss of certain federal funding
- Possible Federal EPA intervention including more strict regulations

- Maricopa County, Arizona
- Clark County, Nevada



# Dust Control in the Coachella Valley



# MOU



# Memorandum of Understanding

## Local Jurisdictions' Obligations:

- ❑ Take lead responsibility for enforcing both local ordinances and approved Fugitive Dust Plans
- ❑ Issue an approved Dust Control Plan only to an operator who produces a signed “Certificate of Completion”, issued by the South Coast AQMD
- ❑ Require a bond, cash Certificate of Deposit, or equivalent form of two thousand dollars (\$2,000.00) per acre for projects >5,000 ft<sup>2</sup> (as a means of monetary ability to stabilize bankrupt projects)

# Memorandum of Understanding

## Local Jurisdictions' Obligations:

- Conduct random, unannounced, inspections at construction sites
- Develop and maintain record-keeping logs for all compliance actions taken such as site visits, notices issued, penalties, etc.
- Discontinue verbal warnings

# Memorandum of Understanding

## South Coast AQMD's Obligations:



- Approve and issue Fugitive Dust Control Plans for operations that do not require a local jurisdiction's grading permit or building permit
  - (such as, aggregate producers, landfills, schools, water districts, California Department of Transportation, and flood control maintenance activities)



# Memorandum of Understanding

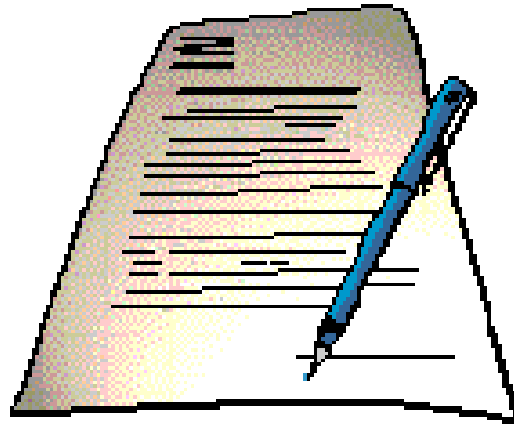


## South Coast AQMD's Obligations:

- Continue to provide outreach and training
- Issue Certificates of Completion
- Develop and implement an abatement and enforcement policy for repeat violators
- Assign an inspector to conduct inspections exclusively in the Coachella Valley



# Dust Control in the Coachella Valley



## **Ordinance**

# Dust Control Ordinance Requirements

<b>Model Ordinance Section</b>	<b>Key Elements</b>	<b>Requirements</b>
410-Work Practices	<p>For any dust generating activities, the dust standards must be met:</p> <ul style="list-style-type: none"><li>▪ &lt; 20% opacity</li><li>▪ &lt; 100 foot plume</li><li>▪ Cannot cross property line</li></ul>	<ul style="list-style-type: none"><li>- Use CVBACM</li><li>- At Minimum, water application system used for sites &gt;1 acre w/dust generating activity</li></ul>

# Dust Control Ordinance Requirements

<b>Model Ordinance Section</b>	<b>Key Elements</b>	<b>Requirements</b>
<p>420- Construction &amp; Demolition Activities</p>	<p>Any operator obtaining building or grading permits for &gt;5,000 sq. ft. of disturbed surface area must prepare a fugitive dust control plan</p> <p>Short-term stabilization used during non-working hours</p> <p>Long-term stabilization required within 10 days of when work ceases for 30 or more days</p> <p>Demolition activities must comply w/Rule 1403</p>	<ul style="list-style-type: none"> <li>- Copy of <b><u>approved</u></b> plan must be kept on site</li> <li>- must be obtained/approved <b><u>before</u></b> earth moving begins</li> <li>- water application, damp soil, or chemical stabilizers</li> <li>- 75% revegetation cover, watering w/access restriction, or chemical stabilizers</li> <li>-Asbestos notification if present</li> </ul>



# Short-term Stabilization

---



# Long-term Stabilization

---



The depth of the roots on the grass allow stabilization of the soil into which they are growing



**Example of stabilized soil  
(can be short-term or long-term)**

# Dust Control Ordinance Requirements

<b>Model Ordinance Section</b>	<b>Key Elements</b>	<b>Requirements</b>
420- Construction & Demolition Activities	<p>Track out that extends &gt; 25 cumulative ft. must be removed within 1 hour <b>and</b> <b><u>all track-out</u> must be removed</b> at the conclusion of workday.</p> <p>Track out prevention system must be installed for projects &gt;5 acres or importing/exporting &gt;100 yds<sup>3</sup>/day at every site egress (dirt to pavement)</p>	<p>- <b>AQMD requires no track out &gt;25 cumulative ft.</b> (stricter rule than ordinance)</p> <p>- <b>Must use at least one</b> system that meets the specs, but more may be necessary to control track out (Ex. washed gravel pad, wheel shaker, wheel washing system, or paved surface)</p>



# Problem...?

**BEFORE**



**...SOLUTION**



**AFTER**

## Example of wheel washer



# Examples of track out control

**100'L x 20'W**



**24'L x 10'W**



**50' L x 30'W x 6''D**



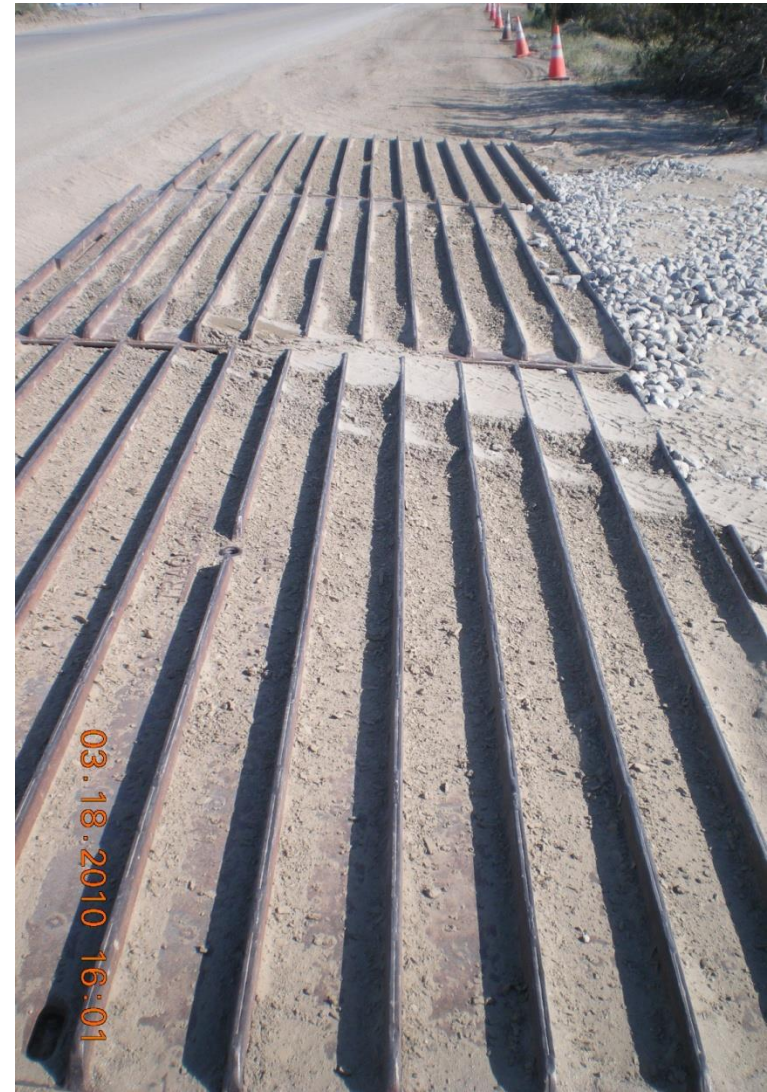
# Common Reasons for Track-out

Lack of maintenance on track-out control devices (caked w/mud)

Track-out control devices not installed at site egress being used



# Track-out Problems



# Track-out Problems



# Dust Control Ordinance Requirements

<b>Model Ordinance Section</b>	<b>Key Elements</b>	<b>Requirements</b>
420- Construction & Demolition Activities	<p>Approved signs must be installed if a PM10 plan is required <b>before</b> any earth movement is begun.</p> <p>Environmental Observer required for projects <math>\geq 50</math> acres, and must be on site or available on site within 30 minutes of initial contact</p>	<ul style="list-style-type: none"><li>-Signs must meet specifications (see page 86 in yellow handbook)</li><li>-Must be hired by property owner/developer <b>and</b></li><li>-Must have dust control as primary duty <b>and</b></li><li>-Must have completed SCAQMD CV dust class</li><li>-Is identified in the dust plan <u>and</u> on signage as responsible for dust control 24/7</li></ul>

# Dust Control Ordinance Requirements

Model Ordinance Section	Key Elements	Requirements
420- Construction & Demolition Activities	<p>No operator required to submit a dust control plan, shall <b>cause or allow</b> dust emissions to exceed the standards</p> <p>For high wind (&gt;25 mph) exemption to meet standards, must meet certain conditions...</p>	<p>-Standards that should not be exceeded:</p> <ul style="list-style-type: none"><li>- <b>20% opacity</b></li><li>- <b>100 ft. plume</b></li><li>- <b>cross property line</b></li></ul> <p>-All CVBACM dust plan requirements must be met</p> <p>-Better CVBACM could not have avoided exceedance</p> <p>-All appropriate records are kept (420.12 thru 420.15)</p> <p>-High wind speeds are <b><u>monitored</u></b> and <b><u>documented</u></b></p>





**Examples of anemometers to measure wind speeds**



Are any of these not an exceedance of the Standards?



# Dust Control Ordinance Requirements

<b>Model Ordinance Section</b>	<b>Key Elements</b>	<b>Requirements</b>
420- Construction & Demolition Activities  Reporting/Recordkeeping	<b><u>Before Construction Begins:</u></b>  -Operator of a project $\geq$ 10 acres shall submit copies of approved dust control plan and notify South Coast AQMD	– Submit 2 copies of approved dust plan within 10 days of approval  –Notify local jurisdiction & South Coast AQMD 24 hours prior to starting work (Project Initiation form on p. 80 in yellow handbook)

# Dust Control Ordinance Requirements

<b>Model Ordinance Section</b>	<b>Key Elements</b>	<b>Requirements</b>
420- Construction & Demolition Activities  Reporting/Recordkeeping	<b><u>During Construction:</u></b>  -Any operator w/earth-moving operations shall complete and keep copies of daily self-inspections records  -Any operator utilizing chemical dust suppressants	-Maintained for 3 years  -Maintain records of type, vendor, method applied, frequency, concentration, date applied kept for 3 years

# Dust Control Ordinance Requirements

<b>Model Ordinance Section</b>	<b>Key Elements</b>	<b>Requirements</b>
420- Construction & Demolition Activities	<p><b><u>After construction ceases:</u></b></p> <p>South Coast AQMD and local jurisdiction shall be notified within 10 days of project completion</p>	<p>–Project completion form (See p.81 in yellow handbook)</p>

# Dust Control Ordinance Requirements

Model Ordinance Section	Key Elements	Requirements
430 Disturbed Vacant lands/weed abatement activities	<p>Restrict access for surfaces &gt;5,000 ft<sup>2</sup></p> <p>Long-term stabilization may be required</p> <p>Weed abatement on sites &gt;5,000 ft<sup>2</sup></p>	<p>–Within 30 days of receiving notice by local jurisdiction fencing or other physical barriers must be installed as permitted</p> <p>–Local jurisdiction may require chemical suppressants or vegetative stabilization on unstabilized vacant land</p> <p>–Water first, then stabilize</p> <p>–Weed abatement <u>should not</u> mean grading or disking of the soil surface</p> <p>–Dust emission <b>standards apply</b></p>

# Examples of fencing/physical barriers



# Dust Control Ordinance Requirements

<b>Model Ordinance Section</b>	<b>Key Elements</b>	<b>Requirements</b>
430- Disturbed Vacant lands/weed abatement activities	<p>No person responsible for vacant lands/weed abatement of vacant lands shall cause or allow exceedance of the standards and shall maintain either:</p> <ul style="list-style-type: none"><li>-<u>Stabilized surface, or</u></li><li>-<u>Threshold friction velocity for disturbed surfaces</u></li></ul>	<p>Standards:</p> <ul style="list-style-type: none"><li>- 20% opacity</li><li>- 100 ft plume</li><li>- Crossing property line</li></ul> <p>-Test methods available in Dust Control Handbook</p>



# Dust Control Ordinance Requirements

<b>Model Ordinance Section</b>	<b>Key Elements</b>	<b>Requirements</b>
430- Disturbed Vacant lands/weed abatement activities	<p>Ownership (contact info) and location of vacant lands shall be submitted to local jurisdiction</p> <p>Records of dust mitigation shall be complied and maintained</p>	<p>–Provide to city or county</p> <p>–Records maintained for 3 years</p>

# Dust Control Ordinance Requirements

<b>Model Ordinance Section</b>	<b>Key Elements</b>	<b>Requirements</b>
440- Unpaved roads (public or private)	<p>Owners of unpaved roads with 20 to 150 vehicles of average daily traffic (ADT)</p> <p>Owners of ≤6 miles of unpaved roads with 150 ADT</p> <p>Owners of &gt;6 miles of unpaved roads with 150 ADT</p>	<p>–Reduce speeds to ≤15 mph (signage or speed control devices)</p> <p>–Shall pave or stabilize according to schedule in ordinance (depends upon city/county of activity) (p.17 in yellow handbook)</p> <p>–At least 2 miles paved or 4 miles stabilized with chemical dust suppressant (p.17 in yellow handbook)</p>

# Dust Control Ordinance Requirements

<b>Model Ordinance Section</b>	<b>Key Elements</b>	<b>Requirements</b>
440-Unpaved roads (public or private)	<p>An owner of any unpaved road shall not allow dust emissions according to the standards and shall comply with the silt requirements</p> <p>Location &amp; ADT estimates must be submitted to the local jurisdiction</p>	<p>Standards:</p> <ul style="list-style-type: none"><li>-20% opacity</li><li>-100 ft. plume</li><li>-Crossing property lines</li></ul> <p>-These will be required as part of the fugitive dust plan</p> <p>-Otherwise sent in separately when changes occur</p>

# Dust Control Ordinance Requirements

<b>Model Ordinance Section</b>	<b>Key Elements</b>	<b>Requirements</b>
450- Unpaved parking lots	<p>New Parking lots are required to be constructed using one of the following:</p> <p>Owners of temporary parking lots (used &lt;24 days/year) are required to apply and maintain stabilizers</p>	<ul style="list-style-type: none"><li>– paved surface</li><li>– chemical stabilizers</li><li>– gravel base put down</li></ul> <ul style="list-style-type: none"><li>– When 40 or more vehicles are expected to use lot 24 hours prior to use.</li><li>– When disturbed surface area &gt;5,000 sq. Ft. must stabilize according to vacant lot requirements.</li></ul>

# Dust Control Ordinance Requirements

<b>Model Ordinance Section</b>	<b>Key Elements</b>	<b>Requirements</b>
450- Unpaved parking lots	An operator of any public or private unpaved parking lot shall not allow dust emissions beyond the standards	Standards: <ul style="list-style-type: none"><li>– <b>20% opacity</b></li><li>– <b>100 ft plume</b></li><li>– <b>Comply with silt requirements (silt loading &lt; or = 0.33 oz/sq. Ft or silt content not &gt;8%)</b></li></ul>

# Dust Control Ordinance Requirements

<b>Model Ordinance Section</b>	<b>Key Elements</b>	<b>Requirements</b>
450- Unpaved parking lots	Provide to the South Coast AQMD and Jurisdiction	Standards: <ul style="list-style-type: none"><li>-Location</li><li>-Lot size (sq. ft.)</li><li>-ADT</li><li>-Maintain records for 3 years</li></ul>

# Dust Control Ordinance Requirements

<b>Model Ordinance Section</b>	<b>Key Elements</b>	<b>Requirements</b>
460- Public or Private Paved Roads	Any owner of paved roads  Erosion caused road deposits > 2500 ft <sup>2</sup> shall be removed	Shall comply with the standards and the ordinance (See p. 19)  Within 24 hours or resumption of traffic (when previously closed)

# Dust Control Ordinance Requirements

<b>Model Ordinance Section</b>	<b>Key Elements</b>	<b>Requirements</b>
500- Administrative Requirements	<p>Anybody preparing a fugitive dust plan</p> <p>At least one person from each contractor and subcontractor responsible for earth movement</p>	<p>Must complete the South Coast AQMD CV Dust Class and maintain certification</p> <p>Must complete the South Coast AQMD CV Dust Class and maintain certification</p>



# Dust Control Ordinance Requirements

---

<b>Model Ordinance Section</b>	<b>Key Elements</b>	<b>Requirements</b>
500- Administrative Requirements	All records per 420	Must be kept on site and provided immediately upon request
	All records per 430 through 460	Must be provided within 24 hours of written request

# Dust Control Ordinance Requirements

<b>Model Ordinance Section</b>	<b>Key Elements</b>	<b>Requirements</b>
600- <b>Exemptions</b>	Provisions of this ordinance shall not apply to:	<ul style="list-style-type: none"><li>-Agricultural operations</li><li>- Any dust generating activity in conflict with federal or state Endangered Species Act (as determined in writing by federal or state agency)</li><li>-Actions required for emergency operations declared by the city or county</li></ul>
	Provisions of section 420.8 (dust signage installation) shall not apply to:	<ul style="list-style-type: none"><li>- Any project lasting &lt;2 weeks w/long-term stabilization</li><li>- line projects (pipelines, cable access lines, etc.) (<b>South Coast AQMD rule 403.1 requires signage</b>)</li></ul>

# Dust Control Ordinance Requirements

<b>Model Ordinance Section</b>	<b>Key Elements</b>	<b>Requirements</b>
700- Compliance	<p>Failure to comply with approved fugitive dust control plan</p> <p>Any person who violates this ordinance one or two times in a year</p> <p>Three or more violations in a year</p>	<p>Will result in a violation of the ordinance and is subject to a fine</p> <p>Will be guilty of an infraction</p> <p>Will be guilty of a misdemeanor</p> <p><b><u>South Coast AQMD violations start at the misdemeanor level</u></b></p>

# CV Dust Control Handbook

## The Coachella Valley Dust Control Ordinances Require:

- At least one of the Coachella Valley Best Available Control Measures (CV BACM) is required to be implemented for each fugitive dust source category
- CV BACM must be implemented such that the applicable performance standards (e.g., visible emissions not to exceed 100 feet or 20 % opacity, or cross any property line, etc.) are met
- Sites w/greater than 10 acres disturbed surface area must submit copy of approved dust plan to the South Coast AQMD, and submit project initiation and project completion forms to both local jurisdiction & South Coast AQMD.

Source Category	Control Measure	Control Measure	Guidance
Staging areas	13-1 13-2	Stabilize staging areas during use; and Stabilize staging area soils at project completion.	Limit size of staging areas  Limit vehicle speeds to 15 mph  Limit number and size of staging area entrances/exits
Stockpiles/ Bulk Material Handling	14-1 14-2  14-3  14-4	Stabilized stockpiled materials; or Install and maintain wind barriers with not more than 50% porosity on three sides of the pile, such that the barrier is equal to or greater than the pile height. Stockpiles within 100 yards of occupied building must not be greater than eight feet in height; or Stockpiles greater than eight feet in height and not covered must have a road bladed to the top to allow water truck access or must have an operational water irrigation system that is capable of complete stockpile coverage.	Add or remove material from the downwind portion of the storage pile  Maintain storage piles to avoid steep sides or faces

# Coachella Valley Best Available Control Measures

# Fugitive Dust Control Plan Guidance

>5,000 ft<sup>2</sup> and <10 acres of disturbed surface area

- Fugitive Dust Control Plan Application (Form A) –pg. 46
- Fugitive Dust Control Plan (form DCP)
- Owner Designee (form OD)- only for plans prepared/implemented by someone other than property owner, developer or contractor. –pg. 50

**Ownership Designee Form**  
**Page 46**

Approved: Designee must be owner of a Project. Dust Control Plan is not prepared/implemented by the property owner, developer or contractor.

Project Information		Please Enter Information Below	
PROJECT NAME			
COMPANY NAME			
ADDRESS LOCATION			
PHONE NUMBER			
APPLICANT'S BUSINESS NUMBER			
AGARDIST CLASS			
CITY/TOWNSHIP			
Property Owner Information		Please Enter Information Below	
PROPERTY OWNER'S NAME			
ADDRESS LOCATION			
PHONE NUMBER			
DATE BORN, ISSUED, ARTIST, BEST BEFORE NUMBER			
<b>OWNER'S STATEMENT</b>			
I hereby certify that the information provided in this form is true and correct to the best of my knowledge and belief. I understand that this information is required for the preparation of the Fugitive Dust Control Plan. I understand that the information provided in this form is confidential and that it may be used for other purposes associated with the project or may be used for other purposes. I understand that the information provided in this form is confidential and that it may be used for other purposes associated with the project or may be used for other purposes. I understand that the information provided in this form is confidential and that it may be used for other purposes associated with the project or may be used for other purposes.			
Owner's Signature		Date	
Printed Name			

**Fugitive Dust Control Plan**  
**Form DCP**

Project Name: \_\_\_\_\_

Permit Number (if applicable): \_\_\_\_\_

Owner Name: \_\_\_\_\_

Anticipated Start Date: \_\_\_\_\_ Anticipated Completion Date: \_\_\_\_\_

Total Earth Movement (Cubic Yards): \_\_\_\_\_  
*Note: Fill out completely and describe Control Actions (e.g. # of watering trucks during phases, available water GPM, etc.) Indicate N/A if not applicable.*

**Project Phases**

Source Category	Cleaning, Grubbing, and Mass Grading (Describe Control Actions)	Final Grading (Describe Control Actions)	Site Construction (Describe Control Actions)
Backfilling			
Cleaning and Grubbing			
Cleaning Fines			
Crushing			

**Fugitive Dust Control Plan Application Form**  
**Page 46**

Please print in ink or type. Blank space must be completed for the application to be processed. Do not use abbreviations over N/A.

1. Town: \_\_\_\_\_ Property Owner: \_\_\_\_\_ Developer: \_\_\_\_\_ Plan Contract #: \_\_\_\_\_  
*(If None, Area/Owner Designee Form, Page 47)*

CONTACT INFORMATION	
COMPANY NAME	
CONTACT ADDRESS	
CITY, STATE, ZIP CODE	
TELEPHONE NUMBER	
FACSIMILE NUMBER	
DATE BORN, ISSUED, ARTIST, BEST BEFORE NUMBER	
AGARDIST CLASS	
CITY/TOWNSHIP	
2. Project Address or Location	
PROJECT NAME	
PROJECT ADDRESS	
CITY, STATE, ZIP CODE	
PROPERTY TAXID OR OTHER IDENTIFIER	
PARCEL NUMBER	

**Fugitive Dust Control Plan Application Form**  
(Form A - Page 1 of 4)

*Please print in ink or type. Blank spaces must be completed for the application to be processed. If an item is not applicable, please enter N/A.*

**1. Form Preparer:** Property Owner  Developer  Prime Contractor  Other \*  
 \*(If Other, attach Owner Designee Form [Page 3-8])\*

<b>CONTACT PERSON NAME</b>	
<b>COMPANY NAME</b>	
<b>COMPANY ADDRESS</b>	
<b>CITY, STATE, ZIP CODE</b>	
<b>TELEPHONE NUMBER</b>	
<b>FACSIMILE NUMBER</b>	
<b>24-HOUR, MANNED AFTER HOURS PHONE NUMBER</b>	
<b>AQMD DUST CLASS CERTIFICATE #</b>	

**2. Project Address or Location**

<b>PROJECT NAME</b>	
<b>PROJECT ADDRESS</b>	
<b>CITY, STATE, ZIP CODE</b>	
<b>NEAREST MAJOR CROSS STREETS</b>	
<b>PARCEL NUMBERS</b>	

## Fugitive Dust Control Plan

For Projects < 10 Acres  
(Form DCP, Page 1 of 5)

**Project Name:** \_\_\_\_\_

**Permit Number (if applicable):** \_\_\_\_\_

**Owner Name:** \_\_\_\_\_

**Anticipated Start Date:** \_\_\_\_\_ **Anticipated Completion Date:** \_\_\_\_\_

**Total Earth-Movement (Cubic Yards):** \_\_\_\_\_

*Note: Fill out completely and describe Control Actions (e.g., # of watering trucks during phases, available water GPM. etc.).*

*Indicate N/A if not applicable*

### Project Phases

Source Category	Clearing, Grubbing, and Mass Grading (Describe Control Actions)	Finish Grading (Describe Control Actions)	Site Construction (Describe Control Actions)
Backfilling			
Clearing and Grubbing			
Clearing Forms			
Crushing			



**Ownership Designee Form**  
(Form OD)

An owner's designee form is required if a Fugitive Dust Control Plan is not prepared/implemented by the property owner, developer or prime contractor.

<b>PROJECT INFORMATION</b>	<b>PLEASE ENTER INFORMATION BELOW</b>
<b>DESIGNEE'S NAME</b>	
<b>COMPANY NAME</b>	
<b>ADDRESS/LOCATION</b>	
<b>PHONE NUMBER</b>	
<b>AFTER-HOURS PHONE NUMBER</b>	
<b>AQMD DUST CLASS CERTIFICATE #</b>	
<b>PROPERTY OWNER INFORMATION</b>	<b>PLEASE ENTER INFORMATION BELOW</b>
<b>PROPERTY OWNER'S NAME</b>	
<b>ADDRESS/LOCATION</b>	
<b>PHONE NUMBER</b>	
<b>24-HOUR, MANNED AFTER- HOURS PHONE NUMBER</b>	
<p><b>OWNER STATEMENT</b></p> <p>I hereby authorize the person listed as my designee to act on my behalf in all matters regarding the issuance and requirements of the Fugitive Dust Control Plan for construction activities. The designee is responsible for project duration. The designee has successfully completed the AQMD Coachella Valley Fugitive Dust Control Class. Furthermore, the designee is responsible for ensuring the contractor(s), subcontractor(s), and all other persons associated with the project are in compliance with the approved Fugitive Dust Control Plan, dust control ordinance requirements, and AQMD regulations.</p> <p>Owner's Signature _____ Date _____</p> <p>Printed Name _____</p>	

# Fugitive Dust Control Plan Guidance

≥10 acres of disturbed surface area

- Fugitive Dust Control Plan Application (Form A) -pg. 46
- Owner Designee Form (OD) -pg. 50
- Site-Specific Fugitive Dust Control Plan pg. - 67
  - o Describe primary control measures based on CV BACM
  - o Ordinance requirements in italics
  - o Submit an approved Dust Plan to the South Coast AQMD w/in 10 days of City approval

Ownership Designee Form <b>Form A</b>	
<i>Approved: Ordinance requires a copy of a Fugitive Dust Control Plan to be prepared and submitted to the project owner, developer or permittee.</i>	
<b>Project Information</b>	<b>PLEASE ENTER INFORMATION BELOW</b>
PROJECT NAME	
COMPANY NAME	
ADDRESS/LOCATION	
PHONE NUMBER	
AERIAL PHOTO NUMBER	
APPROXIMATE CLASS	
CRITERIA CLASS	
<b>Property Owner Information</b>	<b>PLEASE ENTER INFORMATION BELOW</b>
PROPERTY OWNER NAME	
ADDRESS/LOCATION	
PHONE NUMBER	
LA BIRTH, MARRIED, ARTIST, BEST BUSINESS NUMBER	
<b>OWNER INFORMATION</b>	
<i>Indicate whether the Project is to be a Residential or an Industrial or Commercial use by marking the appropriate box. The information provided here should be consistent with the information provided on the project plans. The information provided here should be consistent with the information provided on the project plans. The information provided here should be consistent with the information provided on the project plans.</i>	
Owner's Signature _____	Date _____
Printed Name _____	

**SITE-SPECIFIC FUGITIVE DUST CONTROL PLAN\***  
(SITES 10 ACRES OR GREATER)

*Please ensure that this Fugitive Dust Control Plan Application (Form A) is completed and attached to the Site-Specific Fugitive Dust Control Plan.*

**PLEASE PROVIDE THE FOLLOWING INFORMATION AS COMPLETELY AS POSSIBLE.**

**No. Description of Source(s)** (Please provide best estimates)

- Earth Handling** (Please specify, check box)
  - Excavation (cubic yards of earth removed) \_\_\_\_\_ (check or \_\_\_\_\_)
  - Grading (cubic yards) \_\_\_\_\_ (check or \_\_\_\_\_)
  - Backfill (cubic yards) \_\_\_\_\_ (check or \_\_\_\_\_)
  - Other (specify) \_\_\_\_\_
- Engaged earth** (Please specify, check box)
  - Excavation (cubic yards) \_\_\_\_\_
  - Grading (cubic yards) \_\_\_\_\_
  - Other (specify) \_\_\_\_\_
- Storage piles/ Bulk Material handling** (Please specify, check box)
  - Number of piles \_\_\_\_\_
  - Area (square feet) \_\_\_\_\_
  - Configuration (pile height, width, etc. (per ft)) \_\_\_\_\_
- Vehicle track and cleanup** (Please specify, check box)
  - Number of acres per week exposed to public roads \_\_\_\_\_
  - Estimate of the maximum number of vehicles that will use the site \_\_\_\_\_ (per day)
- Disturbed surface areas** (Please specify, check box)
  - Disturbance (square feet) \_\_\_\_\_
  - Area (square feet) \_\_\_\_\_
- Engaged Parking Lots** (Please specify, check box)
  - Number of engaged lots in this area \_\_\_\_\_
  - Area (square feet) \_\_\_\_\_

**Soil Types**  
 Primary soil type in site \_\_\_\_\_  
 Dust Control Budget  
 Estimate of gross dust control budget \_\_\_\_\_  
 Water Source Identification  
 Water source (pilot) \_\_\_\_\_  
 Back up water source \_\_\_\_\_

Fugitive Dust Control Plan Application Form <b>Form A</b>	
<i>Please print or ink or type. Blank spaces must be completed for the application to be processed. Do not use correction fluid.</i>	
1. Form Purpose: Property Owner: Developer: <input type="checkbox"/> Other: <input type="checkbox"/>	
<i>(If Other, check Owner Designee Form Page # 47)</i>	
<b>Company Information</b>	
COMPANY NAME	
COMPANY ADDRESS	
CITY, STATE, ZIP CODE	
TELEPHONE NUMBER	
FACSIMILE NUMBER	
LA BIRTH, MARRIED, ARTIST, BEST BUSINESS NUMBER	
PHONE NUMBER	
APPROXIMATE CLASS	
CRITERIA CLASS	
<b>2. Project Address or Location</b>	
PROJECT NAME	
PROJECT ADDRESS	
CITY, STATE, ZIP CODE	
<b>TRACED TO THE PLOT</b>	
TRACT IDENTIFICATION NUMBER	
PARCEL NUMBER	

# SITE-SPECIFIC FUGITIVE DUST CONTROL PLAN\*

## (SITES 10 ACRES OR GREATER)

### Site Description

Please ensure that Fugitive Dust Control Plan Application (Form A) is completed and attached to the Site-Specific Fugitive Dust Control Plan.

### Project Description

Please provide the following information as completely as possible.

- | <u>No.</u> | <u>Description of Source(s)</u>   | <i>[Please provide best estimates]</i> |
|------------|---|--|
| <b>1</b>   | <b>Earth-moving</b>   | (If not applicable, check here _____)  |
|            | Maximum cubic yards of earth-movement: _____/month or _____/year  |  |
|            | Anticipated start date: _____ End date _____; or Ongoing _____ (Check)  |  |
|            | Amount of export: _____ (Disposal site) _____   |  |
| <b>2</b>   | <b>Unpaved roads</b>  | (If not applicable, check here _____)  |
|            | Mileage: _____ Estimate of average daily traffic levels: _____  |  |
|            | Type of motor vehicles using roads: _____   |  |
| <b>3</b>   | <b>Storage piles/Bulk Material handling</b>   | (If not applicable, check here _____)  |
|            | Maximum number of piles: _____  |  |
|            | Average height: _____, length/width: _____  |  |
|            | Configuration: _____ cone: _____ windrow: _____ other (specify) _____   |  |
| <b>4</b>   | <b>Vehicular track-out/Cleanup</b>  | (If not applicable, check here _____)  |
|            | Number of access points which connect to public roads: _____  |  |
|            | Estimate of the maximum number of vehicles that will exit the site: _____/ day  |  |
| <b>5</b>   | <b>Disturbed surface areas</b>  | (If not applicable, check here _____)  |
|            | Maximum acreage: _____  |  |
|            | Will any disturbed surface areas remain inactive for at least 10 days? Yes <input type="checkbox"/> No <input type="checkbox"/> |  |
| <b>6.</b>  | <b>Unpaved Parking Lots</b>   | (If not applicable, check here _____)  |
|            | Number of unpaved lots at this site: _____  |  |
|            | Size of each lot: _____   |  |

### **Soil Types**

Primary soil type on site: \_\_\_\_\_

### **Dust Control Budget**

Estimate of project dust control budget: \_\_\_\_\_

### **Water Source Identification**

Water source (g/m): \_\_\_\_\_

Back-up water source: \_\_\_\_\_

\* Use of an 8 ½ by 11 inch, stand alone site-specific fugitive dust control plan is required regardless if the information is included on an approved grading plan.

# Submittals for Projects $\geq$ 10 acres

## Site-Specific Dust Control Plan Template Sample

### No. 1 - EARTH MOVEMENT

#### Coachella Valley Best Available Control Measures

In the space below, please describe your control measures

#### Control Measure

#### Control Action

#### **Watering**

Number of water trucks: 10- 2,000 gal water trucks

Frequency of application: once per hour

#### *Contingency*

Up to 3 additional 2,000 gal water trucks available

#### *Measure(s)*

Watering frequency increased to 3 times per hour

Stop activities if visible emissions cross property line

# Signage Guidelines

---



## Purpose

Allow public to contact responsible party when visible emissions or track-out is observed



## Notes

Quantity/Location approved by local authority

Text height as shown on template

Sign background must contrast with lettering

Sign should be 1" A/C laminated plywood board

Sign lower edge 6' min and 7' max above grade

Local or toll-free number and manned 24/7



**If project duration <2 weeks may request waiver**

# Dust Control Signage Guidelines

(Pg. 86)

SIGN AND LETTER SIZE REQUIREMENTS			
Project size	≤ 1 Acre	1.01 – 9.99 Acres	Over 10 Acres
Sign size	24" H x 36"W	36" x 48"	48" x 96"

Permit # <i>(if applicable)</i>	2"	3"	4"
Developer's Name	2"	3"	4"
Project Name / Tract #####	2"	3"	4"
IF YOU SEE DUST COMING FROM	2"	3"	4"
THIS PROJECT CALL:	2"	3"	4"
Name, Phone Number XXX-XXXX	<b>3"</b>	<b>4.5"</b>	<b>6"</b>
If you do not receive a response, Please call	1.5"	2.25"	3"
City (County) at xxx-xxxx	1.5"	2.25"	3"
and call the South Coast AQMD 1-800- CUT-SMOG	1.5"	2.25"	3"

# got signs?



**Commonly seen at bankrupt vacant sites...**

CITY OF PALM DESERT

PERMIT #



**IF YOU SEE DUST COMING FROM  
THIS PROJECT, PLEASE CALL**



**IF YOU DO NOT GET A RESPONSE WITHIN ONE HOUR, PLEASE CALL  
THE CITY OF PALM DESERT AT 760-346-0611 AND  
REPORT THE ABOVE LISTED PHONE AND PERMIT NUMBER TO  
A.Q.M.D. AT 1-800-CUT-SMOG (1-800-288-7664)**



# 10-Minute Coffee/Water Break!



# Chemical Dust Suppressant Recordkeeping Form

(Form CDS, Page 92)

➤ Sites that utilize chemical dust suppressants

- Type product applied
- Vendor name
- Method
- Frequency
- Concentration
- Quantity
- Application Date

A thumbnail image of the Chemical Dust Suppressant Recordkeeping Form. The form is titled "Chemical Dust Suppressant Recordkeeping Form" and includes instructions at the top. It is divided into several sections: "PROJECT INFORMATION" (with fields for Project Name, Property Owner Name/Phone, Construction Project Name, and Project Address/Location), "DUST SUPPRESSANT" (with fields for Product Name/Brand, Name of Applicator, Dilution Rate, Application Rate, and Machine/Tractor/Trailer), and "DUST SUPPRESSANT APPLICATOR INFORMATION" (with fields for Applicator Name, Contact, Phone, and Warranty Terms of Applicator). At the bottom, there are lines for "Signature of Firm/Project" and "Date".

# Chemical Dust Suppressant Recordkeeping Form

(Form CDS)

The dust control ordinance requires activities that utilize chemical dust suppressants must retain records indicating the type of product applied, vendor name, and the method, frequency, concentration, quantity and date of application. A copy of invoices for chemical dust suppressant products or application services is also required. These records must be retained for at least three years after project completion.

Project Information	Please enter information below
Plan/Permit number (if applicable)	
Property Owner Name/Phone	
Construction Project Name	
Project address/location	
Dust Suppressant Product Information	
Date/Time of Application	
Name of Product	
Dilution Rate	
Application Rate	
Acreage/Square Footage treated	
Traffic or non-traffic area	
Dust Suppressant Applicator Information	
Applicator Name	
Contact	
Phone	
Warrantee Terms (if applicable)	

Signature of Form Preparer: \_\_\_\_\_ Date: \_\_\_\_\_

# Fugitive Dust Control Plan Guidance

## ➤ REMEMBER THE FOLLOWING...

- Prior to Construction
  - Complete and Maintain on site a complete Fugitive Dust Control Plan
  - Install a construction signage
- Dust Control 24/7 for duration of project
- Daily Recordkeeping
- Grading plans to include approved fugitive dust control plan
- Initial and Completion Forms

# Additional Guidance

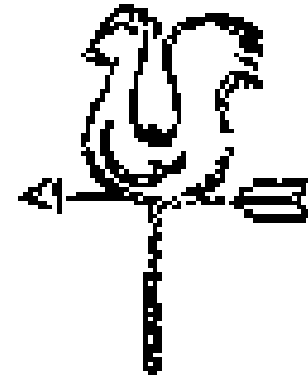
---

## ➤ Wind Monitoring

- South Coast AQMD (909) 396-2399
- On-site wind monitor
- Essential for high wind exemption

## ➤ Test Methods Used

- Opacity
- Stabilized Surface
- Threshold Friction Velocity
- Silt Loading/Content





# Dust Control in the Coachella Valley

---

SUPPORTING SOUTH COAST AQMD RULES AND REGULATIONS



# Rule 403: Fugitive Dust

---

## **(d)(1):**

No person shall **cause** or **allow** visible emissions from any active operation, open storage pile, or disturbed surface area such that:

- The dust emission remains visible in the atmosphere beyond the property line.
- The dust emission exceeds 20% in opacity, if the dust emission is the result of movement of a motorized vehicle

## **(d)(2):**

No person shall conduct active operations without utilizing the applicable best available control measures (BACM) listed in Table 1

# Rule 403: Fugitive Dust

➤ (d)(3):

No person shall cause or allow PM10 levels to exceed  $50 \mu\text{g}/\text{m}^3$

➤ (d)(4):

No person shall allow track-out to extend 25 feet or more in cumulative length from the point of origin from an active operation and remove at conclusion of each workday



# Rule 403: Fugitive Dust



## ➤ (d)(5):

An active operation with a **disturbed surface** area of  $\geq 5$  acres, or daily imports/exports of  $>100$  cubic yards of bulk material must utilize at least one of the measures in subparagraphs (d)(5)(A) through (d)(5)(E):

- Install gravel (not less than 1") pad (6" D x 30' W x 50' L).
- Pave the surface extending at least 100' L and 20' W.
- Install wheel shakers (24' L x 10' W).
- Install wheel washers.
- Any other method approved by the executive Officer and U.S. EPA, as equivalent to the actions listed in (5)(A) through (5)(D).

# Rule 403 Exemptions

- Agricultural operations, whose combined disturbed surface area within one continuous property is 10 acres or less
- Agricultural operations that are within or outside the South Coast AQMD Basin, whose combined disturbed surface area includes more than 10 acres; provided that they are following the Rule 403 agricultural hand book

# Rule 403 Exemptions

- Active operations
  - conducted under emergency life-threatening conditions or declared disaster/state of emergency
  - conducted by essential service utilities during service outages/emergency disruptions



# Rule 403 Exemptions

---

Weed abatement operations **ORDERED** by a county agricultural commissioner or any state, county, or municipal fire department provided that:

- The order has been given due a fire hazard conditions
- The weed stubble is at least three inches above the soil **and**
- Watering is used to prior initiation of the weed abatement.



# Rule 403 Exemptions

---

Rule 403 will not apply when wind gusts exceed 25 miles per hour provided that:

- The required Table 3 contingency measures of Rule 403 are implemented for each dust source type **and**
- Records are maintained

# Rule 403 Exemptions

**Table 3** (summarized)

DUST SOURCE CATEGORY	CONTROL MEASURES
Earth moving	Cease all active operations OR Apply water to soil not more than 15 minutes prior to moving such soil.
Disturbed surface areas	Apply chemical stabilizer prior to wind event.
Unpaved roads	Apply chemical stabilizer prior to wind event, water twice an hour during operation, or stop vehicle traffic
Open storage piles	Water twice an hour or install temporary coverings
Paved road track-out	Cover haul vehicles or comply with CA Vehicle Code freeboard requirements
All categories	Control measures approved by executive officer or EPA

# Rule 403 Exemptions

- Any active operation, open storage pile, or disturbed surface area for which necessary fugitive dust preventive or mitigative actions are in conflict with the federal Endangered Species Act
  - as determined in writing by the State or federal agency responsible for making such determinations



# South Coast AQMD Rule 403.1

## Supplemental Fugitive Dust Control for Coachella Valley

➤ Applicable to Anthropogenic (Man-made) Fugitive Dust Sources in the Coachella Valley.

### – (d)(1) Wind Entrainment of Fugitive Dust

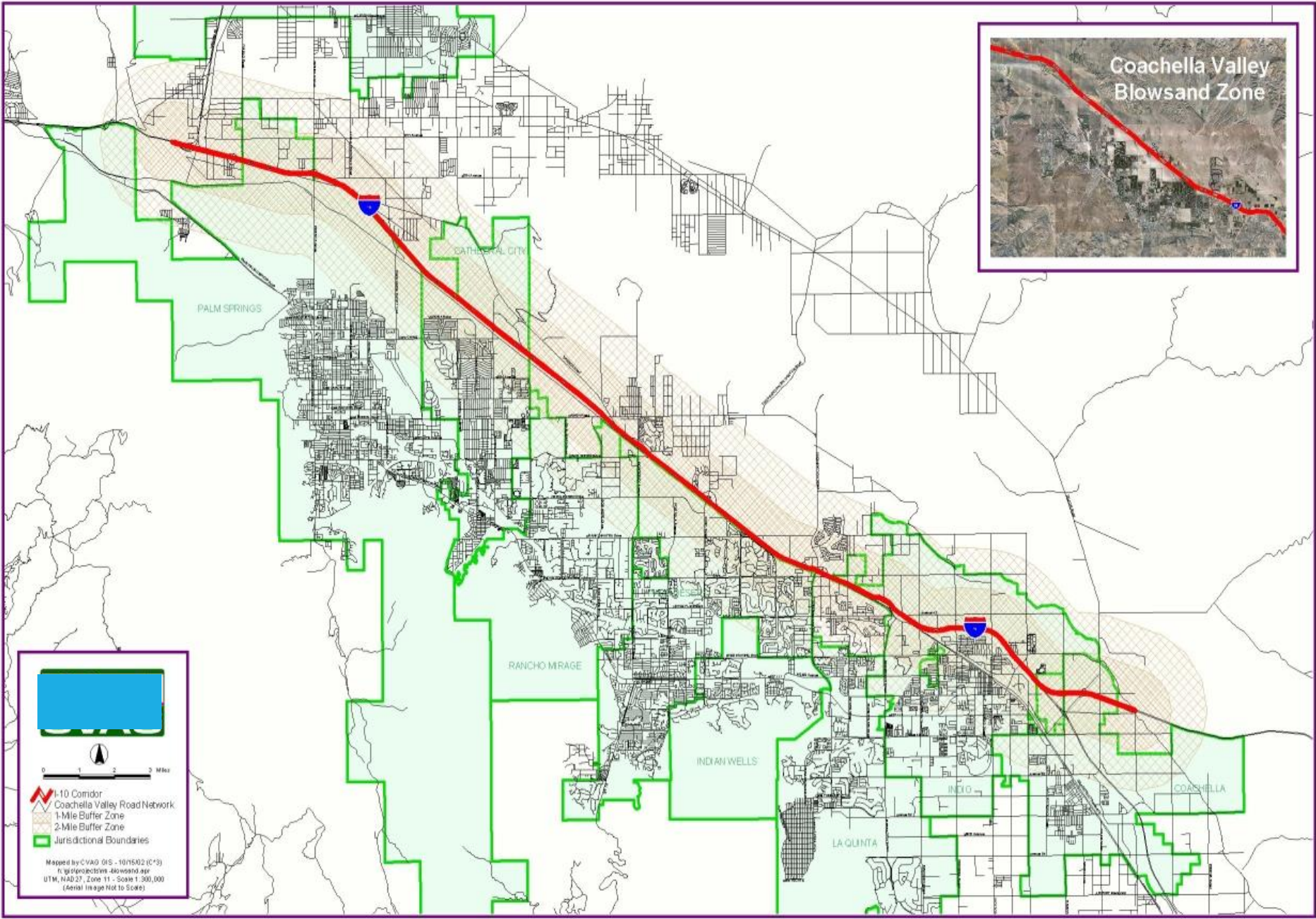
- Wind monitoring required if seeking a Rule 403 exemption, when wind speed exceeds 25 mph, in order to qualify for this exemption you **MUST MEET ALL** the ordinance high wind conditions.
- Wind speed verification must be by:
  - ❑ South Coast AQMD Forecast (909) 396-2399 **or**
  - ❑ On-site Monitor

### – (d)(2) Special requirements for CV “Blowsand Zone”

- 2 miles either side of I-10
  - ❑ Stabilize man-made deposits of bulk material within 24 hrs plus one stabilization procedure (70% cover water application 3x/day, dust suppressant six-month application, or install windbreaks)







**I-10 Corridor**  
**Coachella Valley Road Network**  
**1-Mile Buffer Zone**  
**2-Mile Buffer Zone**  
**Jurisdictional Boundaries**

Mapped by CVAO GIS - 10/15/02 (C'S)  
F:\gis\products\sim-blowsand.apr  
UTM, NAD 83, Zone 11 - Scale 1:300,000  
(Aerial Image Not to Scale)

# South Coast AQMD Rule 403.1

## Supplemental Fugitive Dust Control for Coachella Valley

### – (d)(3) Special Requirements for “Blowsand Zone”

#### □ 2 miles either side of I-10

- Stabilize deposits of bulk material originating from undisturbed natural desert areas within 72 hrs plus one stabilization procedure (70% cover water 3x/day, dust suppressant six-month application, or install windbreaks)

### – (d)(4) Inactive Disturbed Surface Area

#### □ Inactive disturbed areas (active operations ceased for 20 days or more) must be stabilized

- Implement at least one control action in Rule 403 Table 2



### – (d)(5) Agricultural Tilling

#### □ Agricultural tilling to cease when winds > 25 mph

- Based on the South Coast AQMD forecast (909) 396-2399 **or**
- On-site Monitor

# South Coast AQMD Rule 403.1

## Supplemental Fugitive Dust Control for Coachella Valley

- **(e)(1)** Dust Control Plan must be approved before any earth moving activities
  - ❑ Dust control plans required for projects > 5,000 ft<sup>2</sup> of disturbed surface area (approved by either City/County or South Coast AQMD as applicable)
  
- **(e)(2)** Dust Control Plan
  - ❑ Keep copy of approved plan on site in conspicuous location
  
- **(e)(3)** Dust Control Signage
  - ❑ Install and Maintain signage prior to initiating any earth-moving activity of >5,000 ft<sup>2</sup> acres
  - ❑ Signage must meet minimum requirements
  - ❑ **Different than Ordinance requirements for Line projects** (pipelines, cable access, etc.)

# South Coast AQMD Rule 403.1 Supplemental Fugitive Dust Control for Coachella Valley

---

- **(e)(4) Dust Control Supervisor**
  - Dust Control Supervisor required for sites  $\geq 50$  acres total disturbed surface area
    - Employed by or contracted with property owner or developer; **and**
    - Is on site or available within 30 minutes of initial contact; **and**
    - Has the authority to expeditiously employ sufficient dust mitigation; **and**
    - Has completed the South Coast AQMD Coachella Valley Fugitive Dust Control Class and been issued a Certificate of Completion
  
- **(e)(5) Violation of the plan is a violation of the Rule**



# South Coast AQMD Rule 403.1

## Supplemental Fugitive Dust Control for Coachella Valley

### **Fugitive Dust Control Plan Preparation, submittal, & Approval**

- (f)(1) must be prepared according to (e)(1) in 8½” x 11” format & include:
  - Name, address, phone number of person(s) responsible for the preparation, submittal, and implementation of the fugitive dust control plan; **and**
  - Description of operation and site map; **and**
  - List of all fugitive dust emissions within property line; **and**
  - Description of control measures applied to each of the sources; **and**
  - Description of contingency control measures for immediate implementation upon exceedance of standards
  
- **(f)(2)** special technical circumstances (not economic) preventing use of at least 1 control measure requires justification statement attachment
  
- **(f)(3)** dust plans to be approved within 30 days of receipt. Plan must meet requirements of (f)(1).

# South Coast AQMD Rule 403.1

## Supplemental Fugitive Dust Control for Coachella Valley

- **(f)(4)** dust plan contact person will be notified if plan needs changes prior to approval.
- **(f)(5)** approved dust plans are valid for 1 year from date of approval.
  - Resubmittal required annually, or within 30 days prior to expiration date (fees required).
  - If no changes to original approved plan, 403NC form can be submitted (no fees required).

## Wind Monitoring Implementation Requirements

- **(g)(1)** determination of wind speed per (d)(1) & (d)(5)
  - **(A)** sites with anemometer installed
    - 2 wind gusts in excess of 25 mph in 30 minute period
  - **(B)** sites without anemometer installed
    - South Coast AQMD wind forecast (909)396-
    - When no wind event is forecast: Dust emissions from source visible beyond 100 feet of site & evidence of wind-driven dust

# South Coast AQMD Rule 403.1

## Supplemental Fugitive Dust Control for Coachella Valley

- (g)(2)** installation of on-site anemometer
  - Notification required within 10 days of installation
  - Subject to (g)(1) requirements if equipment failure

## Recordkeeping

- (h)(1)** daily records required for all actions taken for compliance.
- (h)(2)** special requirements for sites with installed anemometers
  - Records of equipment type, any wind gusts recorded in excess of 25 mph, and for compliance w/(d)(5) & (i)(3)

# South Coast AQMD Rule 403.1 Supplemental Fugitive Dust Control for Coachella Valley

## Exemptions

- **(i)(1)** ceased or inactive mining operations (Surface Mining & Recovery Act of 1975)
- **(i)(2)** provisions of (d)(2), (d)(3), & (d)(4) shall not apply to:
  - ❑ Any dust control actions that conflict with Federal or State Endangered Species Act. Ex. Site includes habitat of listed species as determined by State or Federal agency in writing).
  - ❑ Disturbed surface area or bulk material deposits less than 2500 sq. ft.
  - ❑ Non-routine or emergency maintenance of flood-control channels and water spreading basins
- **(i)(3)** provisions of (d)(5) shall not apply to agricultural tilling or soil mulching activities under the following conditions:
  - ❑ for 2 days of high wind, the 3<sup>rd</sup> day is exempt (activities can continue)
  - ❑ For 60 hours during a month, rest of month is exempt (activities can continue)
  - ❑ During precipitation
- **(i)(4)** provisions of (e)(1) shall not apply to any active operation that is required to submit a dust plan to local jurisdiction.



# Forms for different size sites by Jurisdiction

Jurisdiction	Size	Forms to use
City/County	>5,000 ft <sup>2</sup> & <10 acres	Forms A, DCP, & OD
	≥ 10 acres	Forms A, Site Specific, & OD
South Coast AQMD	>5,000 ft <sup>2</sup> & <10 acres	400A, DCP, & OD
	≥ 10 acres	400A, Site Specific, & OD

# South Coast AQMD Form 400A

(found at aqmd.gov)

Section D - Application Type		
6. The Facility Is: <input checked="" type="radio"/> Not In RECLAIM or Title V <input type="radio"/> In RECLAIM <input type="radio"/> In Title V <input type="radio"/> In RECLAIM & Title V Programs		
7. Reason for Submitting Application (Select only ONE):		
7a. New Equipment or Process Application:	7c. Equipment or Process with an Existing/Previous Application or Permit:	
<input type="radio"/> New Construction (Permit to Construct) <input type="radio"/> Equipment On-Site But Not Constructed or Operational <input type="radio"/> Equipment Operating Without A Permit * <input checked="" type="radio"/> Compliance Plan <input type="radio"/> Registration/Certification <input type="radio"/> Streamlined Standard Permit	<input type="radio"/> Administrative Change <input type="radio"/> Alteration/Modification <input type="radio"/> Alteration/Modification without Prior Approval * <input type="radio"/> Change of Condition <input type="radio"/> Change of Condition without Prior Approval * <input type="radio"/> Change of Location <input type="radio"/> Change of Location without Prior Approval * <input type="radio"/> Equipment Operating with an Expired/Inactive Permit *	<p style="text-align: center;"><b>Existing or Previous Permit/Application</b></p> <p style="text-align: center;">If you checked any of the items in 7c., you MUST provide an existing Permit or Application Number.</p> <p style="text-align: center;">_____</p>
7b. Facility Permits:		
<input type="radio"/> Title V Application or Amendment (Also submit Form 500-A1) <input type="radio"/> RECLAIM Facility Permit Amendment	* A Higher Permit Processing Fee and additional Annual Operating Fees (up to 3 full years) may apply (Rule 301(c)(1)(D)(i)).	
8a. Estimated Start Date of Construction (mm/dd/yyyy):	8b. Estimated End Date of Construction (mm/dd/yyyy):	8c. Estimated Start Date of Operation (mm/dd/yyyy):
_____	_____	_____
9. Description of Equipment or Reason for Compliance Plan (list applicable rule):	10. For Identical equipment, how many additional applications are being submitted with this application? _____ <i>(Form 400 A required for each equipment / process)</i>	
Dust Plan		

# Local Jurisdiction Exemption

Projects with 5,000 ft<sup>2</sup> disturbed surface area that are **not** subject to local jurisdiction dust control ordinances (**but** are still subject to South Coast AQMD rules):

- Aggregate producers
- Landfills
- School Districts
- Water Districts
- Federal Land
- CA Dept. of Transportation (Caltrans)
- Other State projects
- Flood control maintenance
- Utilities
- some City/County projects

# Other Applicable South Coast AQMD Rules...

## Rule 401

- Visible Emissions (H/S 41701)

## Rule 402

- Public Nuisance (H/S 41700)

## Rules 201/203

- Permits To Operate (i.e. permits for any engine with >50 BHP)

## PERP (Portable Equipment Registration Program)

- <http://www.arb.ca.gov/portable/perp/perp.htm>
- Ex. Rental equipment with engines >50BHP

# South Coast AQMD Rule 401-Visible Emissions

California Health & Safety Code Sec 41701

➤ Emissions **DO NOT** have to cross property line

➤ Single source

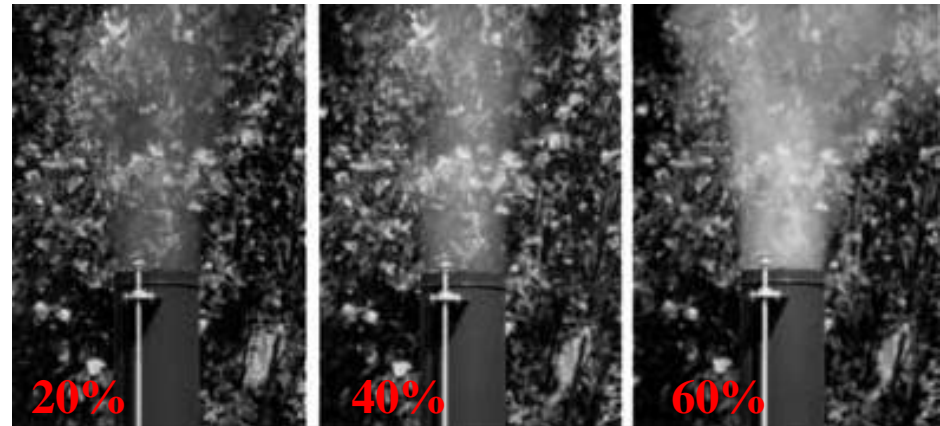
➤ Opacity determination

– Certified observer

– AQMD Rule 401: 1 Ringlemann (20% opacity)

– California H&S 41701: 40% opacity

➤ 3 minutes in 1 hour (cumulative)



# South Coast AQMD Rule 402–Public Nuisance

California Health & Safety Code Sec 41700

- Considerable number of people (persons/public minimum of 6 complaints/one complaint per household) can lead to a violation
- Causing injury, detriment, nuisance, annoyance of an air pollutant nature (Ex. Dust, odors, track out, etc. )
- Endangering comfort, repose, health or safety of any persons that are affected at any time...



# RULE 201: Permit to Construct

# RULE 203: Permit to Operate

## ➤ Rule 201

A person shall not build, erect, install, alter or replace any equipment or agricultural permit unit...without first obtaining written authorization for such construction from the Executive Officer. A permit to construct shall remain in effect until the permit to operate the equipment or agricultural permit unit...granted or denied, or the application is canceled.

## ➤ Rule 203

(a) A person shall not operate or use any equipment or agricultural permit unit...without first obtaining a written permit to operate from the Executive Officer or except as provided in Rule 202.

(b) The equipment or agricultural permit unit shall not be operated contrary to the conditions specified in the permit to operate.

# Portable Equipment Registration Program (PERP)

- Engines and engine-driven equipment (50 bhp or greater) that emit  $PM_{10}$ 
  - Statewide Program created by CARB
  - Can choose a South Coast AQMD permit or CARB registration
    - Ex. Electrical generators, wood chippers, compressors, pumps and cranes
    - Portable equipment can not remain at a single location for more than 12 months





# Portable Equipment Registration Program (PERP)

- CARB registration is good anywhere in the state of California & lasts for 3 years
  - CARB assigns green placards & stickers for equipment
- South Coast AQMD permit is only good within the South Coast AQMD jurisdiction & lasts only 1 year
  - South Coast AQMD assigns permit (no sticker for equipment)



<http://www.arb.ca.gov/portable/perp/perp.htm>

# Statewide Portable Equipment Registration

## Statewide Portable Equipment Registration

The following operating conditions apply for registration # **123456**  
Engine Serial # ~~XXXXXXXXXXXX~~

Registration No: **123456**

Legal Owner or Operator: **ABC Owner**

Mailing Address: **12345  
ABC Rd.**

### Engine Description:

Certified non-road portable internal combustion engine, compression ignition, Perkins, model 1104C-44, Serial No: ~~XXXXXXXXXXXX~~, rated at 128 bhp and diesel fueled.

U.S. EPA Engine Family Name: 3PKXL04.4RKI

Conditions: see attached

Home District: San Joaquin Valley Unified Air  
Pollution Control District

Engine Inspection Discount: No inspection discount claimed

Expiration Date: December 31, 2010

Jorge Fernandez  
Chief, Program Evaluation Branch  
Stationary Source Division

### General Requirements

1. The engine shall be properly maintained and kept in good operating condition at all times.
2. The registration identification sticker shall be affixed in a visible location on the registered portable engine at all times. The metal placard shall be securely affixed on a vertical surface of the portable engine in a location that is readily visible from a distance. A legible copy of the registration certificate and operating conditions shall be kept on site with the portable engine and shall be made accessible to the Air Resources Board or district representative upon request.
3. Engine fuel shall meet standards for California motor vehicle fuels as set forth in Chapter 5, Division 3, Title 13, of the California Code of Regulations, or shall have been verified through the In-Use Strategies to Control Emissions From Diesel Engines verification procedure per Title 13 of the California Code of Regulations commencing with section 2700.
4. The engine and any replacement engine shall not reside at the same location for more than 12 consecutive months.
5. The operation of this engine shall not cause a public nuisance.
6. The engine shall be equipped with operational and properly maintained non-resettable hour time meter.
7. For each rental engine or an engine used in a third party rental transaction, the owner shall provide each person who rents the portable engine with a copy of the registration certificate, including operating conditions, as part of the rental agreement.
8. The operator of a portable engine or equipment unit shall obtain district authorization prior to operation at any specific location where the Statewide registration is not valid.
9. This registration is not valid for operation of generators used to provide power into the grid, except during an emergency event or other unforeseen event that affects grid stability.
10. This registration is not valid for operation of generators used to provide primary or supplemental power to a building, facility, stationary source, or stationary equipment except during the following scenarios: unforeseen interruptions of power from the serving utility; maintenance and repair operations; electrical upgrade operations that do not exceed 60 calendar days; and remote operations where grid power is unavailable.
11. This registration is not valid for operation within the boundaries of the California Outer Continental Shelf and State Territorial Waters.
12. The portable engine shall not be operated under both statewide registration and a district permit at any specific location.

The following operating conditions apply for registration # **123456**  
Engine Serial # ~~XXXXXXXXXXXX~~

13. This registration is not valid for operation of an engine that powers an equipment unit that has been

## Sample Registration

## Sample Conditions

# *Air Pollution Violations*

Violation Notices- are issued for violations of any applicable South Coast AQMD rule, city/county ordinance, or state law...

Consequently, violations of South Coast AQMD rules and regulations are considered misdemeanors.

Criminal and Civil penalties are designed according to the State of California Health and Safety Codes, starting with Section 42400.

## Notices of Violation Resolution Avenue:

- Minor Source Penalty Assessment Program (MSPAP)
- Civil Prosecution
- Referral for Criminal Prosecution

# *Air Pollution Violations*

- Order for Abatement- South Coast AQMD enforcement staff determines that ongoing or repeated violations are likely, and can include:
  - Stopping the company from operating out of compliance
  - Imposing additional conditions, such as:
    - Maintain **3** 12000 gallon Water Towers on site
    - Maintain eight 4000 gal water trucks on site
    - Water all unpaved roads every 2 hours
    - Install Wind Fencing & remove buildup > 1 foot
    - Install Wind Monitoring
    - Use 6-Month chemical stabilizers.

# *Air Pollution Violations*

- Variance- continuous operation of equipment that is in violation for reasons beyond YOUR control
  - An administrative order to continue operating without penalties
  - Only the South Coast AQMD Hearing Board can grant a Variance (cannot be done by an inspector)
  - Forms to apply for a Variance can be found at [aqmd.gov](http://aqmd.gov)

# AIR QUALITY COMPLAINTS

To Report Dust Emissions

Complaints:

Call the South Coast AQMD  
toll-free at:

1-800-CUT-SMOG

1-800-288-7664

[www.aqmd.gov](http://www.aqmd.gov)



REMEMBER...CLEAN AIR IS EVERY *BODY'S* BUSINESS!

# South Coast AQMD Dust Program Staff

➤ Crystal Villanueva

- Supervising Air Quality Inspector

(909) 396-2561

[cvillanueva@aqmd.gov](mailto:cvillanueva@aqmd.gov)

➤ Nancy Leone

- Office Assistant

(909) 396-2392

[nleone@aqmd.gov](mailto:nleone@aqmd.gov)

➤ Yazmin Kakishita

- Staff Specialist
- Contact for dust plan submittals

(909) 396-3207

[ykakishita@aqmd.gov](mailto:ykakishita@aqmd.gov)

# The END... Questions?



South Coast  
AQMD



*Thank You For Attending*